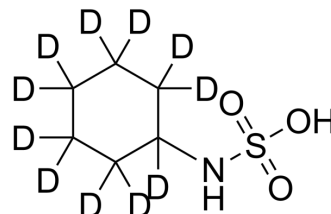


Cyclamic Acid-d₁₁

Cat. No.:	HY-B0541S
CAS No.:	1215770-73-2
Molecular Formula:	C ₆ H ₂ D ₁₁ NO ₃ S
Molecular Weight:	190.31
Target:	Isotope-Labeled Compounds
Pathway:	Others
Storage:	Please store the product under the recommended conditions in the Certificate of Analysis.



SOLVENT & SOLUBILITY

In Vitro

H₂O : 100 mg/mL (525.46 mM; Need ultrasonic and warming)

	Solvent Concentration	Mass	1 mg	5 mg	10 mg
Preparing Stock Solutions	1 mM		5.2546 mL	26.2729 mL	52.5458 mL
	5 mM		1.0509 mL	5.2546 mL	10.5092 mL
	10 mM		0.5255 mL	2.6273 mL	5.2546 mL

Please refer to the solubility information to select the appropriate solvent.

BIOLOGICAL ACTIVITY

Description

Cyclamic Acid-d₁₁ is the deuterium labeled Cyclamic acid[1]. Cyclamic acid (Cyclohexylsulfamic acid) is one of the most widely used artificial sweeteners in food and pharmaceuticals[2].

In Vitro

Stable heavy isotopes of hydrogen, carbon, and other elements have been incorporated into drug molecules, largely as tracers for quantitation during the drug development process. Deuteration has gained attention because of its potential to affect the pharmacokinetic and metabolic profiles of drugs^[1].

MCE has not independently confirmed the accuracy of these methods. They are for reference only.

REFERENCES

- [1]. Russak EM, et al. Impact of Deuterium Substitution on the Pharmacokinetics of Pharmaceuticals. Ann Pharmacother. 2019 Feb;53(2):211-216.
- [2]. Leban I, et al. Structures of artificial sweeteners--cyclamic acid and sodium cyclamate with other cyclamates. Acta Crystallogr B. 2007 Jun;63(Pt 3):418-25.

Caution: Product has not been fully validated for medical applications. For research use only.

Tel: 609-228-6898

Fax: 609-228-5909

E-mail: tech@MedChemExpress.com

Address: 1 Deer Park Dr, Suite Q, Monmouth Junction, NJ 08852, USA