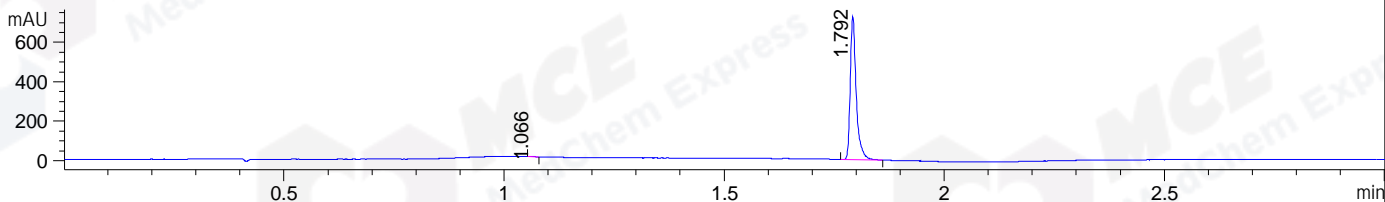
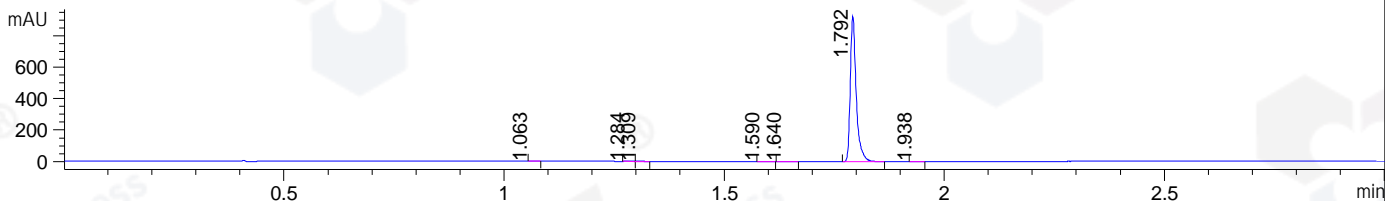


File ..ATA\2020\20200624\1017\CPK2020-623-14181-.D Tgt Mass (CHM):  
 Injection Date : 24 Jun 20 11:45 pm +0800 Seq. Line : 131  
 Sample Name : CPK2020-623-14181 Location : P1-A-07  
 Acq. Operator : ZJ\_1432 Inj : 1  
 Spec. Reported : MS Integration Inj Volume : 1 ul  
 Acq. Method : D:\Chem32\1\data\2020\20200624\1017\1-POS-3MIN.M  
 Analysis Method : D:\CHEM32\1\DATA\2020\20200624\1017\1-POS-3MIN.M  
 Catalog No : HY-B0545  
 Method Info : Mobile Phase: A: water(0.01%TFA) B:ACN(0.01%TFA)  
 Gradient: 5% to 95%B within 1.3 min  
 Flow Rate :1.8ml/min  
 Column :SunFire C18, 4.6\*50mm,3.5um A-RP-607  
 Oven Temperature : 45

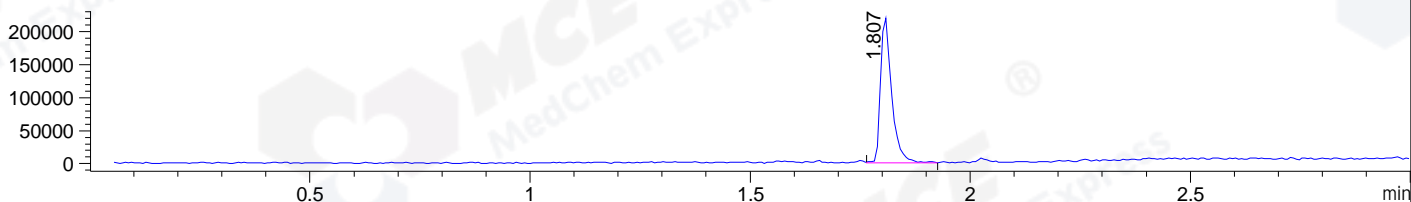
DAD1 B, Sig=214,4 Ref=off



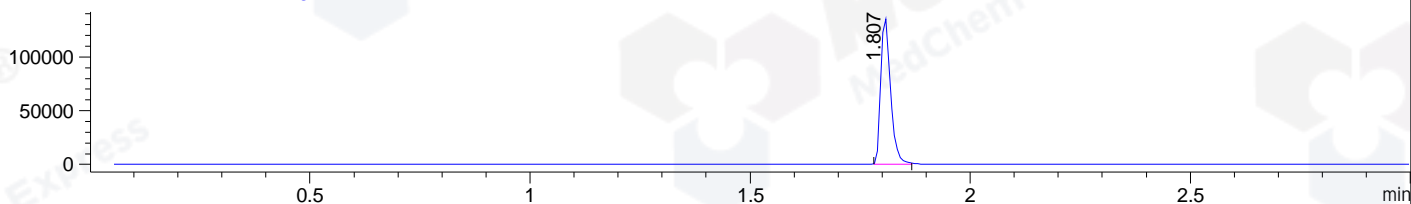
DAD1 C, Sig=254,4 Ref=off



MSD1 TIC, MS File ES-API, Pos, Scan, Frag: 70



Ion 286, MSD1 286, Target Mass 285 +H Positive, EIC=285.7:286.7



## Integration Results for DAD1 B, Sig=214,4 Ref=off

RetTim	Width	Area	Height	Area%	MS (+)
1.07	0.01	1.54	1.91	0.22	ND
1.79	0.02	688.35	726.73	99.78	286

## Integration Results for DAD1 C, Sig=254,4 Ref=off

RetTim	Width	Area	Height	Area%	MS (+)
1.06	0.01	0.37	0.65	0.04	ND
1.28	0.02	1.18	1.12	0.14	ND
1.31	0.01	0.76	0.90	0.09	ND
1.59	0.02	0.60	0.53	0.07	ND
1.64	0.02	0.55	0.55	0.06	ND
1.79	0.02	871.49	927.41	99.54	286
1.94	0.01	0.56	0.67	0.06	ND

## Integration Results for MSD1 TIC, MS File

RetTim	Width	Area	Height	Area%	MS (+)
--------	-------	------	--------	-------	--------

1.81      0.02      386800.69      222041.27      100.00      286

Ret. Time: 1.81

<<<< POSITIVE SPECTRA >>>>

ES-API Positive

