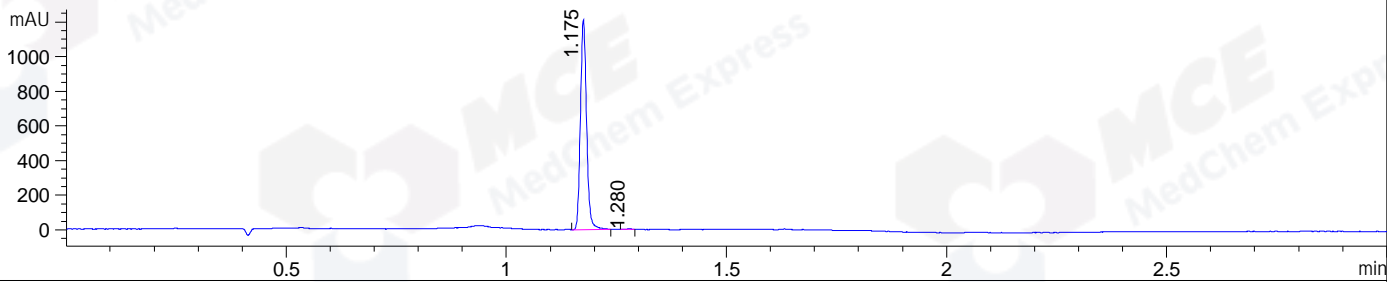
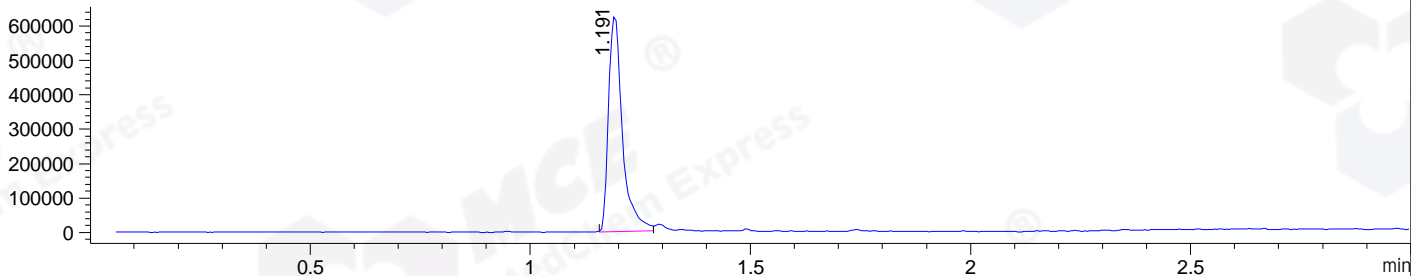


File ..\DATA\2020\20201230\1224\BIZ2020-D29-SCH9.D Tgt Mass (CHM):
 Injection Date : 30 Dec 20 10:02 pm +0800 Seq. Line : 143
 Sample Name : BIZ2020-D29-SCH9 Location : P1-B-05
 Acq. Operator : zyj_1547 Inj : 1
 Spec. Reported : MS Integration Inj Volume : 1 ul
 Acq. Method : D:\Chem32\1\data\2020\20201230\1224\1-POS-3MIN.M
 Analysis Method : D:\CHEM32\1\DATA\2020\20201230\1224\1-POS-3MIN.M
 CAS NO. : 84057-95-4
 Method Info : Mobile Phase: A: water(0.01%TFA) B:ACN(0.01%TFA)
 Gradient: 5% to 95%B within 1.3 min
 Flow Rate :1.8ml/min
 Column :SunFire C18, 4.6*50mm,3.5um A-RP-698

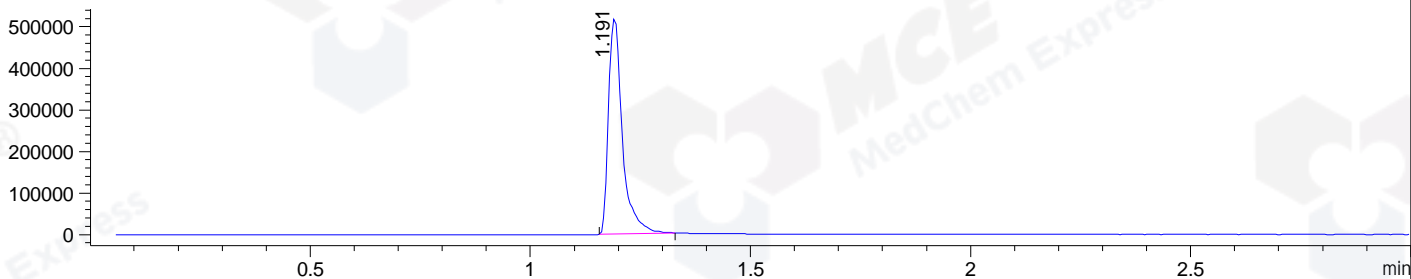
DAD1 B, Sig=214,4 Ref=off



MSD1 TIC, MS File ES-API, Pos, Scan, Frag: 70



Ion 275, MSD1 275, Target Mass 274 +H Positive, EIC=274.7:275.7



Integration Results for DAD1 B, Sig=214,4 Ref=off

RetTim	Width	Area	Height	Area%	MS (+)
1.17	0.02	1182.30	1211.72	99.71	275
1.28	0.01	3.41	3.86	0.29	275

Integration Results for MSD1 TIC, MS File

RetTim	Width	Area	Height	Area%	MS (+)
1.19	0.03	1382523.75	626268.44	100.00	275

Ret. Time: 1.19

<<<< POSITIVE SPECTRA >>>>

ES-API Positive

