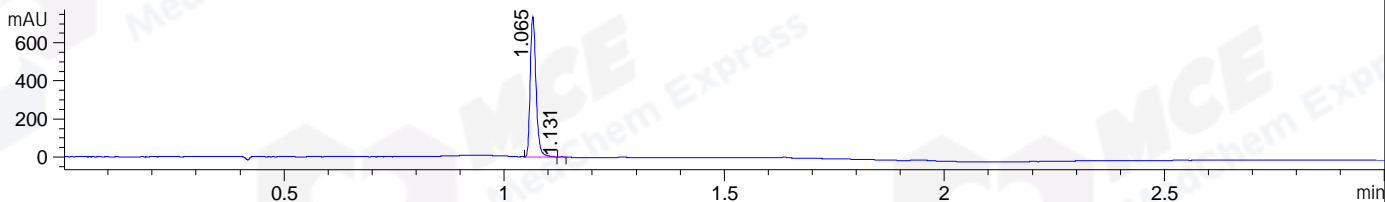
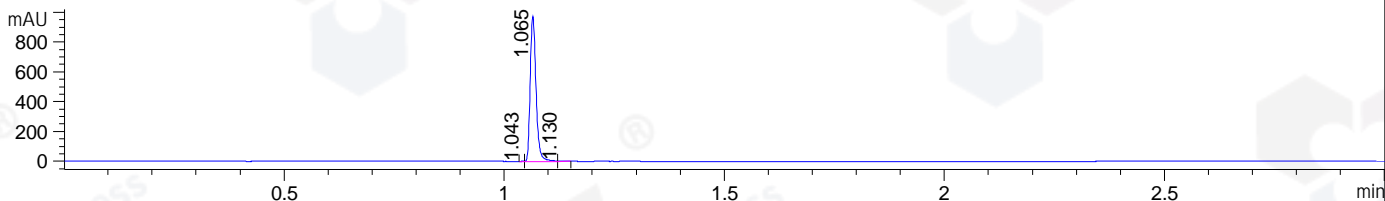


File ..\DATA\2020\20201201\1180\BIZ2020-N30-SCH3.D Tgt Mass (CHM):  
 Injection Date : 1 Dec 20 1:33 pm +0800 Seq. Line : 51  
 Sample Name : BIZ2020-N30-SCH3 Location : P1-A-06  
 Acq. Operator : zyj\_1547 Inj : 1  
 Spec. Reported : MS Integration Inj Volume : 1 ul  
 Acq. Method : D:\Chem32\1\data\2020\20201201\1180\1-POS-3MIN.M  
 Analysis Method : D:\CHEM32\1\DATA\2020\20201201\1180\1-POS-3MIN.M  
 CAS NO. : 72558-82-8  
 Method Info : Mobile Phase: A: water(0.01%TFA) B:ACN(0.01%TFA)  
 Gradient: 5% to 95%B within 1.3 min  
 Flow Rate :1.8ml/min  
 Column :SunFire C18, 4.6\*50mm,3.5um A-RP-698

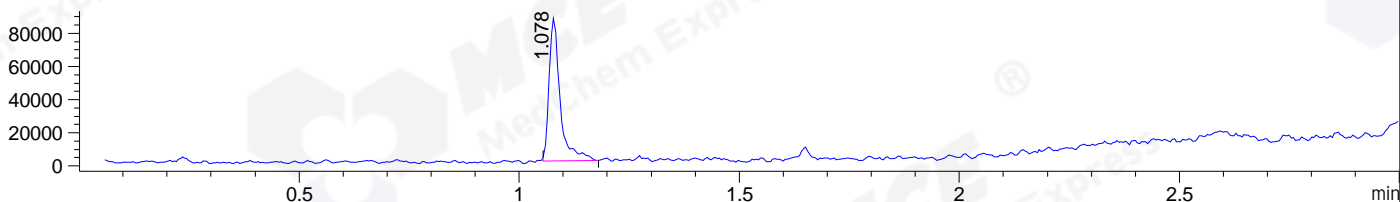
DAD1 B, Sig=214,4 Ref=off



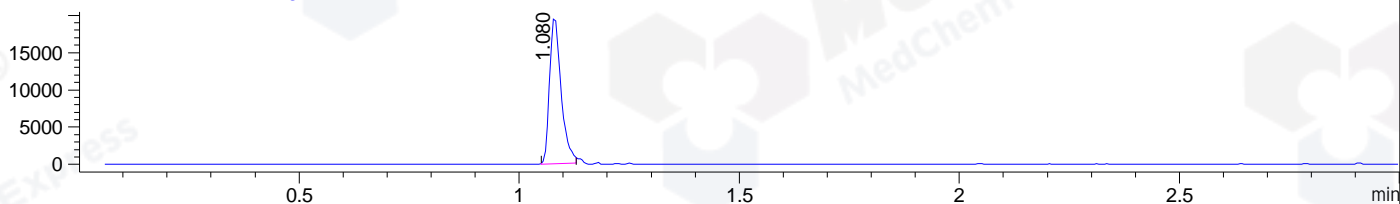
DAD1 C, Sig=254,4 Ref=off



MSD1 TIC, MS File ES-API, Pos, Scan, Frag: 70



Ion 547, MSD1 547, Target Mass 546 +H Positive, EIC=546.7:547.7



## Integration Results for DAD1 B, Sig=214,4 Ref=off

RetTim	Width	Area	Height	Area%	MS(+)
1.07	0.02	672.65	739.15	99.86	274
1.13	0.01	0.92	1.60	0.14	274

## Integration Results for DAD1 C, Sig=254,4 Ref=off

RetTim	Width	Area	Height	Area%	MS(+)
1.04	0.01	0.54	1.12	0.06	ND
1.07	0.02	893.43	977.77	99.55	274
1.13	0.02	3.46	3.58	0.39	274

## Integration Results for MSD1 TIC, MS File

RetTim	Width	Area	Height	Area%	MS(+)
1.08	0.03	149521.86	86104.06	100.00	274

Ret. Time: 1.08

<<<< POSITIVE SPECTRA >>>>

ES-API Positive

