

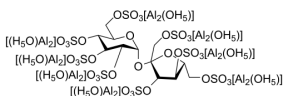
Sucralfate

| | |
|----------------|---|
| Cat. No.: | HY-B0644 |
| CAS No.: | 54182-58-0 |
| Batch No.: | 89281 |
| Chemical Name: | Aluminum, hexadeca- μ -hydroxytetracosahydroxy[[μ 8-[[1,3,4,6-tetra-O-sulfo- β -D-fructofuranosyl α -D-glucopyranoside tetrakis(sulfato- κ O')]](8-)]hexadeca- |

PHYSICAL AND CHEMICAL PROPERTIES

| | | | |
|--------------------|---|-------|----------|
| Molecular Formula: | C ₁₂ H ₁₄ Al ₁₆ O ₇₅ S ₈ | | |
| Molecular Weight: | 2046.42 | | |
| Storage: | Powder | -20°C | 3 years |
| | | 4°C | 2 years |
| | In solvent | -80°C | 6 months |
| | | -20°C | 1 month |

Chemical Structure:



ANALYTICAL DATA

| | |
|------------------------------------|---|
| Appearance: | White to off-white (Solid) |
| Acid Neutralization Equivalents: | 12.500 |
| Aluminum(Al): | 17.297% |
| Arsenic(As): | 2.900 ppm |
| Chloride(Cl): | 0.220 % |
| Heavy metals: | 12.800 ppm |
| Pyridine and 2-Methylpyridine: | 14.300 ppm |
| Sucrose Heptasulfate/Sucros | 0.036 |
| Octasulfate: | |
| Sucrose Octasulfate Content(HPLC): | 32.800 |
| Conclusion: | The product has been tested and complies with the given specifications. |

Caution: Product has not been fully validated for medical applications. For research use only.

Tel: 609-228-6898

Fax: 609-228-5909

E-mail: tech@MedChemExpress.com

Address: 1 Deer Park Dr, Suite Q, Monmouth Junction, NJ 08852, USA