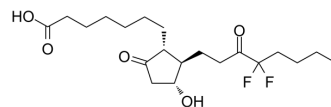


Lubiprostone

Cat. No.:	HY-B0679		
CAS No.:	136790-76-6		
Molecular Formula:	C ₂₀ H ₃₂ F ₂ O ₅		
Molecular Weight:	390.46		
Target:	Chloride Channel		
Pathway:	Membrane Transporter/Ion Channel		
Storage:	Powder	-20°C	3 years
		4°C	2 years
	In solvent	-80°C	6 months
		-20°C	1 month



SOLVENT & SOLUBILITY

In Vitro

DMSO : 100 mg/mL (256.11 mM; Need ultrasonic)

Concentration	Solvent	Mass		
		1 mg	5 mg	10 mg
Preparing Stock Solutions	1 mM	2.5611 mL	12.8054 mL	25.6108 mL
	5 mM	0.5122 mL	2.5611 mL	5.1222 mL
	10 mM	0.2561 mL	1.2805 mL	2.5611 mL

Please refer to the solubility information to select the appropriate solvent.

In Vivo

- Add each solvent one by one: 10% DMSO >> 40% PEG300 >> 5% Tween-80 >> 45% saline
Solubility: ≥ 3.25 mg/mL (8.32 mM); Clear solution
- Add each solvent one by one: 10% DMSO >> 90% (20% SBE-β-CD in saline)
Solubility: ≥ 3.25 mg/mL (8.32 mM); Clear solution
- Add each solvent one by one: 10% DMSO >> 90% corn oil
Solubility: ≥ 3.25 mg/mL (8.32 mM); Clear solution

BIOLOGICAL ACTIVITY

Description

Lubiprostone(SPI-0211;RU0211) is a gastrointestinal agent used for the treatment of idiopathic chronic constipation.Target: OthersLubiprostone is a bicyclic fatty acid derived from prostaglandin E1 that acts by specifically activating CIC-2 chloride channels on the apical aspect of gastrointestinal epithelial cells, producing a chloride-rich fluid secretion. These secretions soften the stool, increase motility, and promote spontaneous bowel movements (SBM). From Wikipedia.

CUSTOMER VALIDATION

-
- Dig Dis Sci. 2019 Sep;64(9):2527-2537.

See more customer validations on www.MedChemExpress.com

REFERENCES

[1]. <http://en.wikipedia.org/wiki/Lubiprostone>

Caution: Product has not been fully validated for medical applications. For research use only.

Tel: 609-228-6898

Fax: 609-228-5909

E-mail: tech@MedChemExpress.com

Address: 1 Deer Park Dr, Suite Q, Monmouth Junction, NJ 08852, USA