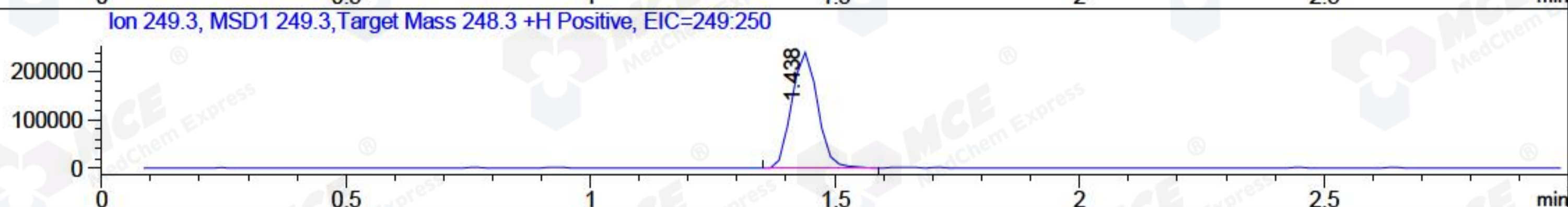
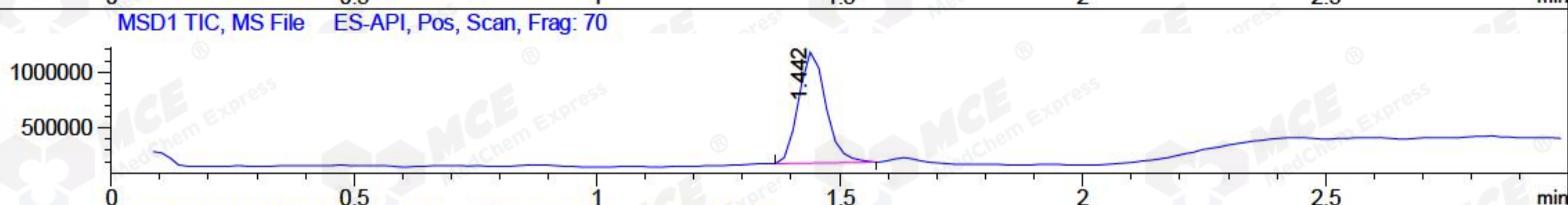
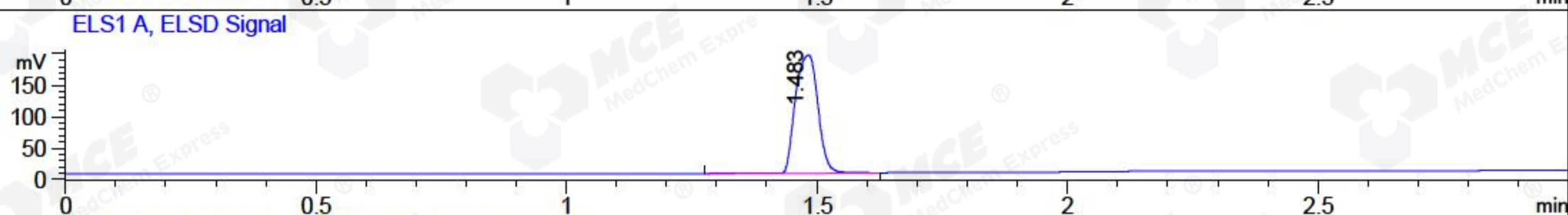
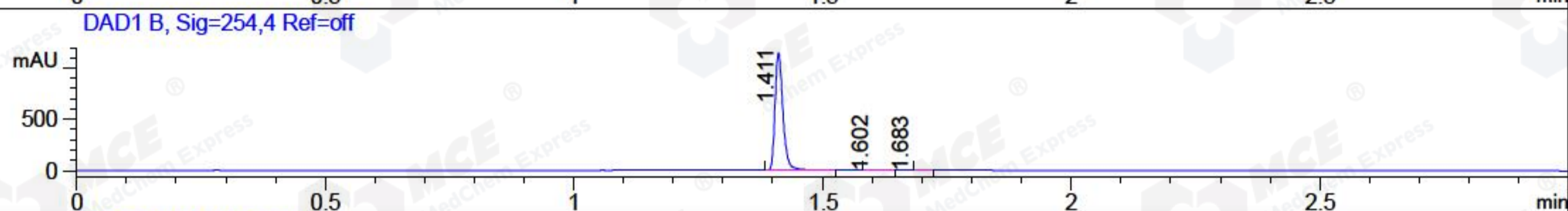
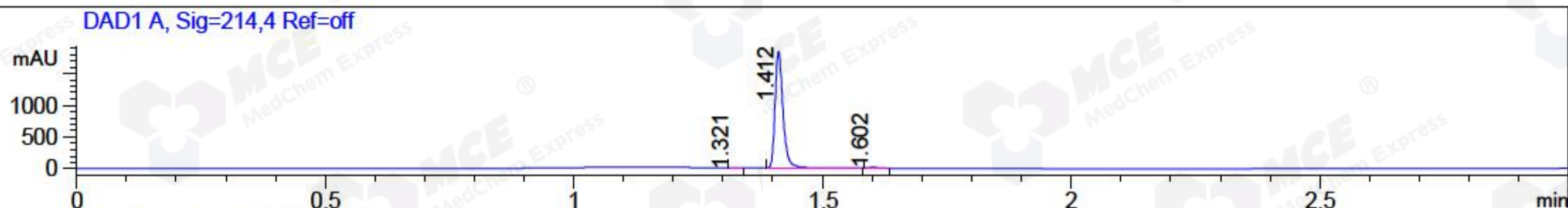


File ..\2018\20180412\20180412\CPK2018-412-16760.D Tgt Mass (CHM):
Injection Date : 12 Apr 18 2:29 pm +0800 Seq. Line : 70
Sample Name : CPK2018-412-16760 Location : P1-F-04
Acq. Operator : SYSTEM Inj : 1
Spec. Reported : MS Integration Inj Volume : 1 ul
Acq. Method : D:\LCMS03\Data\2018\20180412\20180412\1-POS-3MIN.M
Analysis Method : D:\LCMS03\Data\2018\20180412\20180412\1-POS-3MIN.M
Catalog No : HY-B0688 Batch#16760
Method Info : Mobile Phase: A: water(0.01%TFA) B:ACN(0.01%TFA)
Gradient: 5% to 95%B within 1.3 min
Flow Rate : 1.8ml/min
Column :SunFire C18, 4.6*50mm,3.5um A-RP-186
Oven Temperature : 45C



Integration Results for DAD1 A, Sig=214,4 Ref=off

RetTim	Width	Area	Height	Area%	MS (+)
1.32	0.02	0.99	0.87	0.05	102
1.41	0.02	2020.50	1830.51	99.15	519
1.60	0.02	16.32	15.29	0.80	102

Integration Results for DAD1 B, Sig=254,4 Ref=off

RetTim	Width	Area	Height	Area%	MS (+)
1.41	0.02	1262.21	1147.55	99.57	519
1.60	0.02	5.19	4.77	0.41	102
1.68	0.02	0.20	0.01	0.02	102

Integration Results for ELS1 A, ELSD Signal

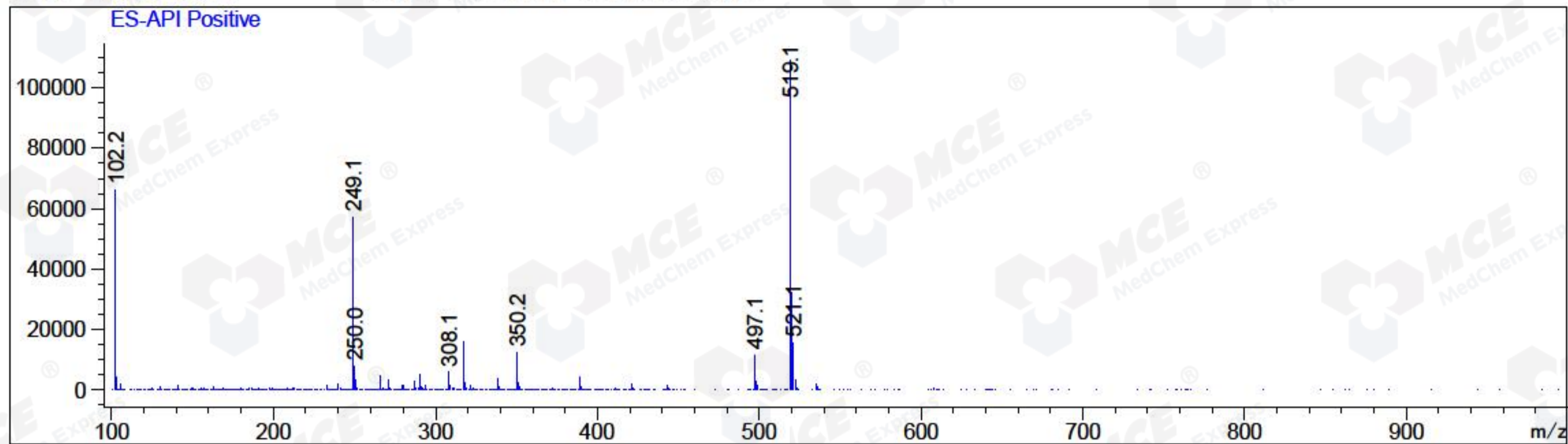
RetTim	Width	Area	Height	Area%	MS (+)
1.48	0.05	586.13	187.96	100.00	519

Integration Results for MSD1 TIC, MS File

RetTim	Width	Area	Height	Area%	MS (+)
1.44	0.06	3851520.75	1005351.75	100.00	519

Ret. Time: 1.44

<<<< POSITIVE SPECTRA >>>>



*** End of Report ***