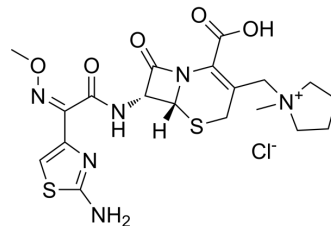


## Cefepime chloride

Cat. No.:	HY-B0692A
CAS No.:	107648-79-3
Molecular Formula:	C <sub>19</sub> H <sub>25</sub> ClN <sub>6</sub> O <sub>5</sub> S <sub>2</sub>
Molecular Weight:	517.02
Target:	Antibiotic; Bacterial; Penicillin-binding protein (PBP)
Pathway:	Anti-infection
Storage:	Please store the product under the recommended conditions in the Certificate of Analysis.



### BIOLOGICAL ACTIVITY

<b>Description</b>	Cefepime (BMY-28142) chloride is a broad-spectrum and cross the blood-brain barrier cephalosporin. Cefepime chloride shows antibacterial effects against both Gram-positive and Gram-negative aerobic bacteria. Cefepime chloride induces neurotoxicity <sup>[1][2][3][4]</sup> .
<b>IC<sub>50</sub> &amp; Target</b>	β-lactam
<b>In Vitro</b>	Cefepime chloride exerts its antibacterial effects by binding to penicillin-binding proteins <sup>[2]</sup> . MCE has not independently confirmed the accuracy of these methods. They are for reference only.
<b>In Vivo</b>	Cefepime chloride (80 mg/kg; i.p.) significantly increases the half-life and mice survived <sup>[4]</sup> . MCE has not independently confirmed the accuracy of these methods. They are for reference only.
Animal Model:	Male CD-1 mice <sup>[4]</sup>
Dosage:	80 mg/kg
Administration:	i.p.
Result:	Significantly prolonged the half-life of cefepime and all mice survived at 18-22 mg/kg cisplatin, and when pretreatment with 26 mg/kg cisplatin significantly decreased survival with the half-life of cefepime was not significantly longer than of 18 mg/kg cisplatin.

### CUSTOMER VALIDATION

- Pharmaceutics. 2023 Nov 30, 15(12), 2705.
- J Antibiot (Tokyo). 2023 Feb 1.

See more customer validations on [www.MedChemExpress.com](http://www.MedChemExpress.com)

### REFERENCES

- 
- [1]. Yahav D, et al. Efficacy and safety of cefepime: a systematic review and meta-analysis. *Lancet Infect Dis.* 2007 May;7(5):338-48.
- [2]. Barradell LB, Bryson HM. Cefepime. A review of its antibacterial activity, pharmacokinetic properties and therapeutic use. *Drugs.* 1994;47(3):471-505.
- [3]. Payne LE, et al. Cefepime-induced neurotoxicity: a systematic review. *Crit Care.* 2017 Nov 14;21(1):276. doi: 10.1186/s13054-017-1856-1.
- [4]. Máthé A, et al. The effect of different doses of cisplatin on the pharmacokinetic parameters of cefepime in mice. *Lab Anim.* 2006 Jul;40(3):296-300.
- 

**Caution: Product has not been fully validated for medical applications. For research use only.**

Tel: 609-228-6898

Fax: 609-228-5909

E-mail: [tech@MedChemExpress.com](mailto:tech@MedChemExpress.com)

Address: 1 Deer Park Dr, Suite Q, Monmouth Junction, NJ 08852, USA