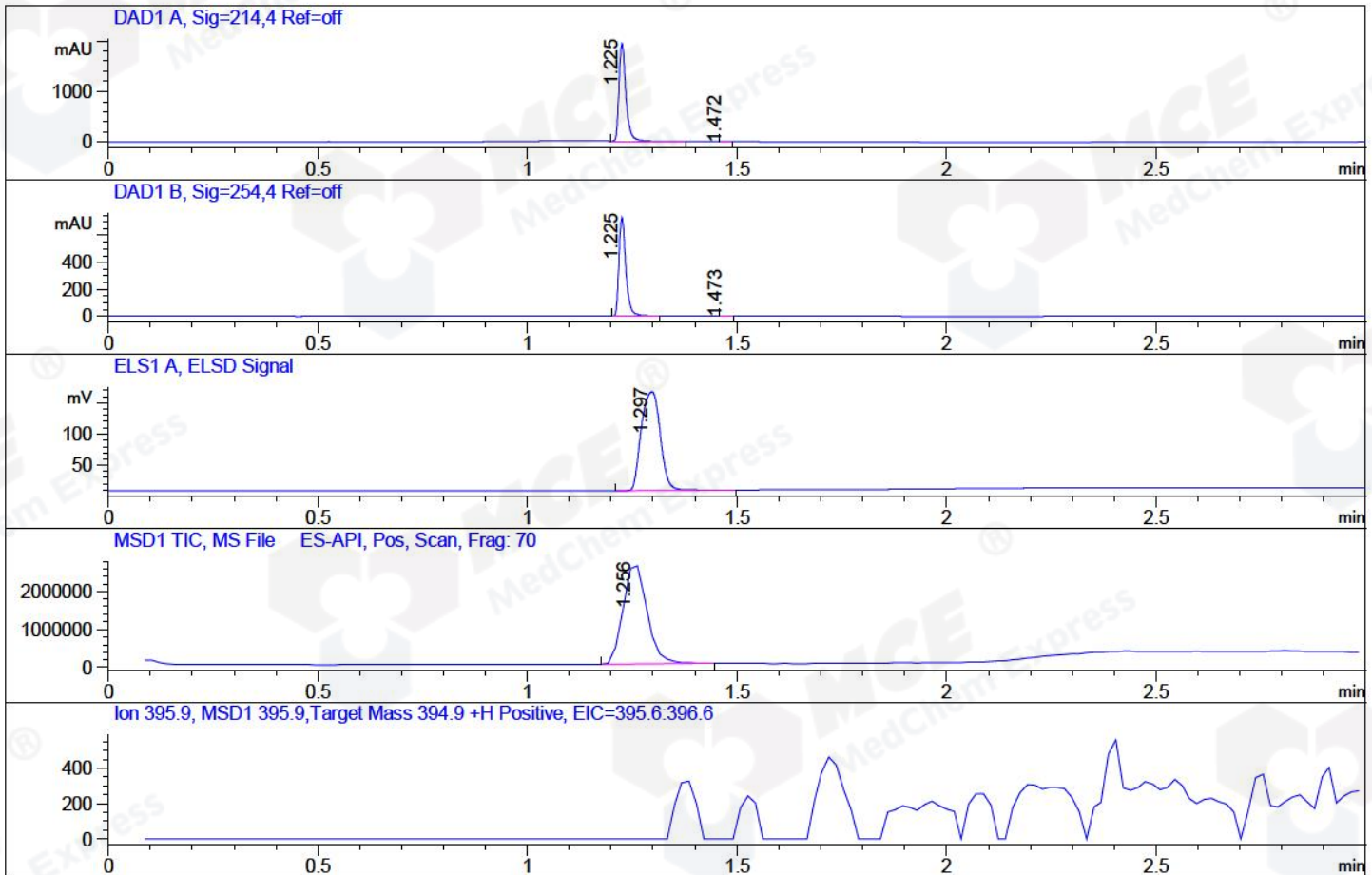


File ..\2018\20180411\20180411\CPK2018-411-16839.D Tgt Mass (CHM):  
Injection Date : 11 Apr 18 8:59 pm +0800 Seq. Line : 126  
Sample Name : CPK2018-411-16839 Location : P2-E-11  
Acq. Operator : SYSTEM Inj : 1  
Spec. Reported : MS Integration Inj Volume : 1 ul  
Acq. Method : D:\LCMS03\Data\2018\20180411\20180411\1-POS-3MIN.M  
Analysis Method : D:\LCMS03\Data\2018\20180411\20180411\1-POS-3MIN.M  
Catalog No : HY-B0732 Batch#16839  
Method Info : Mobile Phase: A: water(0.01%TFA) B:ACN(0.01%TFA)  
Gradient: 5% to 95%B within 1.3 min  
Flow Rate :1.8ml/min  
Column :SunFire C18, 4.6\*50mm,3.5um A-RP-186  
Oven Temperature : 45C



## Integration Results for DAD1 A, Sig=214,4 Ref=off

RetTim	Width	Area	Height	Area%	MS (+)
1.23	0.02	2203.95	1930.36	99.95	359
1.47	0.02	1.18	1.23	0.05	233

## Integration Results for DAD1 B, Sig=254,4 Ref=off

RetTim	Width	Area	Height	Area%	MS (+)
1.23	0.02	833.29	728.93	99.95	359
1.47	0.02	0.44	0.47	0.05	233

## Integration Results for ELS1 A, ELSD Signal

RetTim	Width	Area	Height	Area%	MS (+)
1.30	0.05	495.26	158.01	100.00	359

## Integration Results for MSD1 TIC, MS File

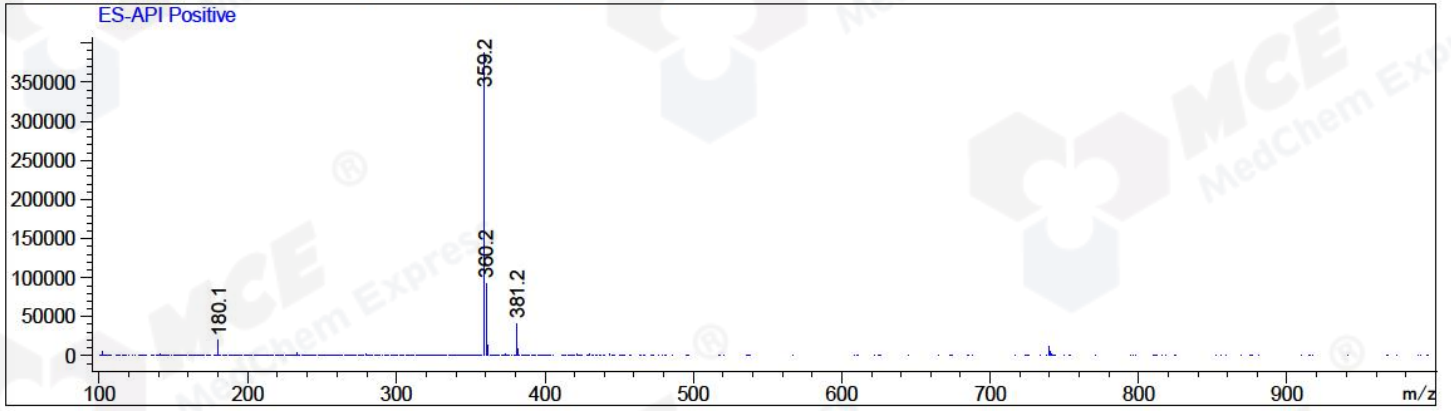
1.26      0.06      10491576.00      2669886.25      100.00      359

RetTim	Width	Area	Height	Area%	MS (+)
--------	-------	------	--------	-------	--------

-----|-----|-----|-----|-----|-----|

Ret. Time: 1.26

<<<< POSITIVE SPECTRA >>>>



\*\*\* End of Report \*\*\*