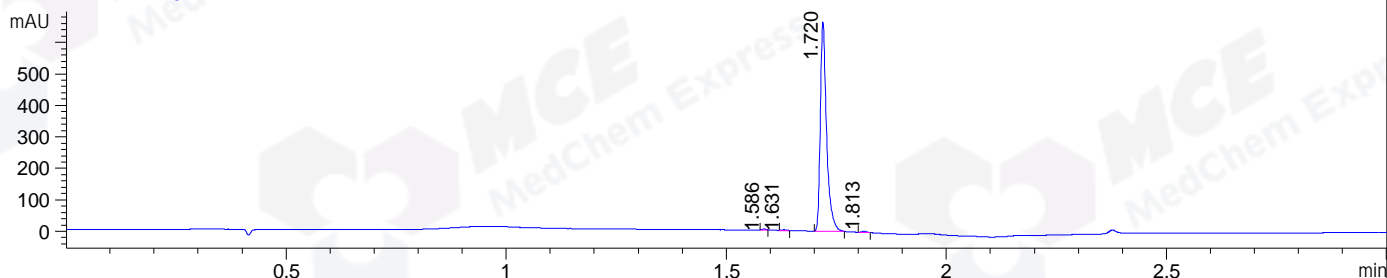
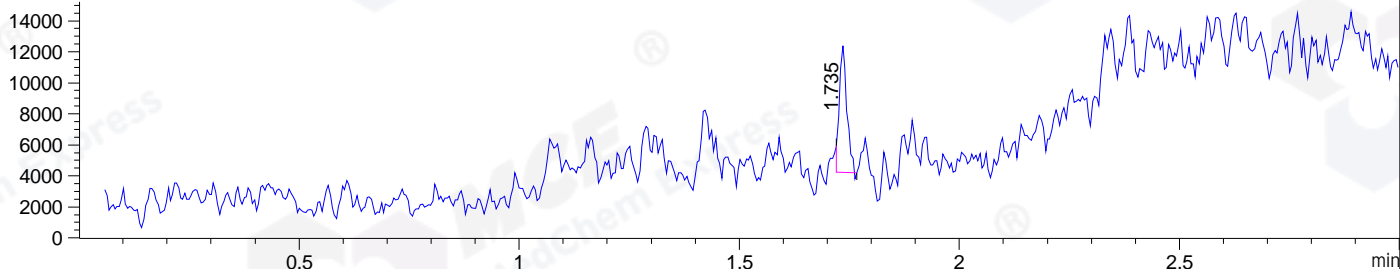


File ..\DATA\2020\20200928\1119\BIZ2020-927-SCH9.D Tgt Mass (CHM):
 Injection Date : 28 Sep 20 11:02 am +0800 Seq. Line : 24
 Sample Name : BIZ2020-927-SCH9 Location : P1-A-06
 Acq. Operator : zyj_1547 Inj : 1
 Spec. Reported : MS Integration Inj Volume : 1 ul
 Acq. Method : D:\Chem32\1\data\2020\20200928\1119\1-POS-3MIN.M
 Analysis Method : D:\CHEM32\1\DATA\2020\20200928\1119\1-POS-3MIN.M
 CAS NO. : 94-74-6
 Method Info : Mobile Phase: A: water(0.01%TFA) B:ACN(0.01%TFA)
 Gradient: 5% to 95%B within 1.3 min
 Flow Rate :1.8ml/min
 Column :SunFire C18, 4.6*50mm,3.5um A-RP-624

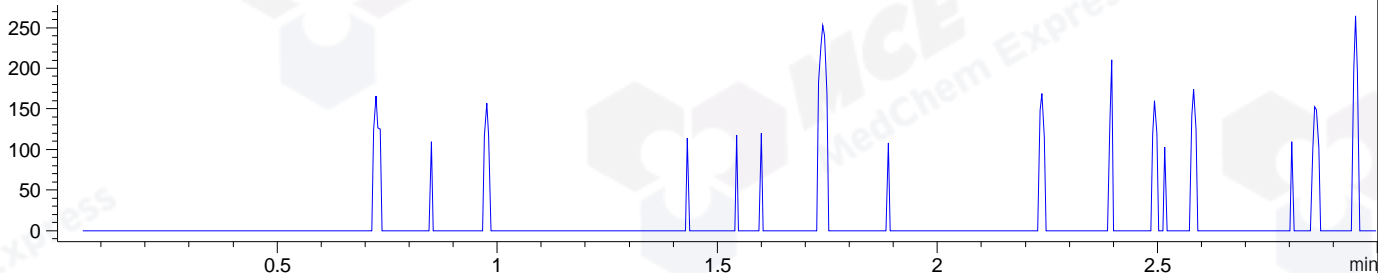
DAD1 B, Sig=214,4 Ref=off



MSD1 TIC, MS File ES-API, Pos, Scan, Frag: 70



Ion 201, MSD1 201, Target Mass 200 +H Positive, EIC=200.7:201.7



Integration Results for DAD1 B, Sig=214,4 Ref=off

RetTim	Width	Area	Height	Area%	MS (+)
1.59	0.01	1.69	2.61	0.25	ND
1.63	0.01	2.02	2.45	0.30	ND
1.72	0.02	657.67	665.25	98.95	ND
1.81	0.01	3.28	3.84	0.49	ND

Integration Results for MSD1 TIC, MS File

RetTim	Width	Area	Height	Area%	MS (+)
1.74	0.02	9660.06	8187.81	100.00	ND