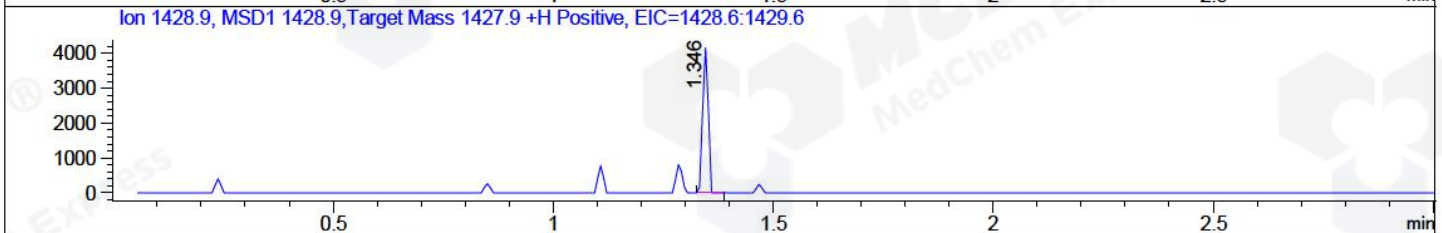
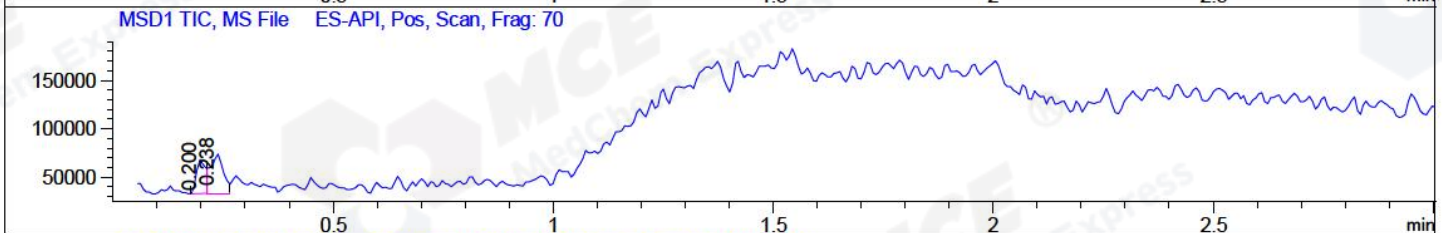
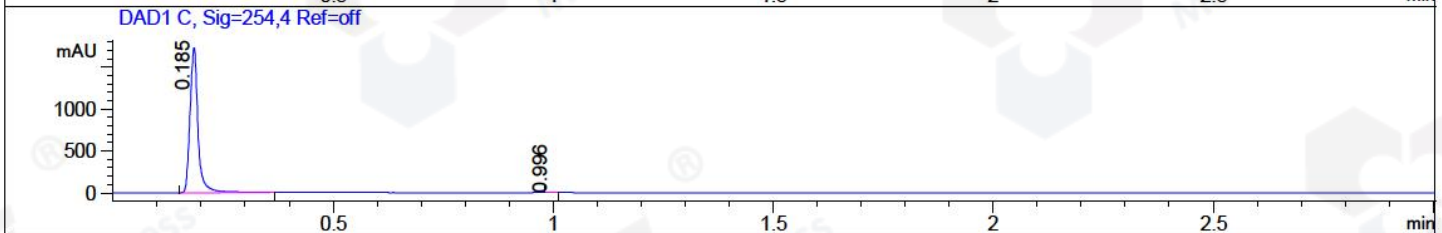
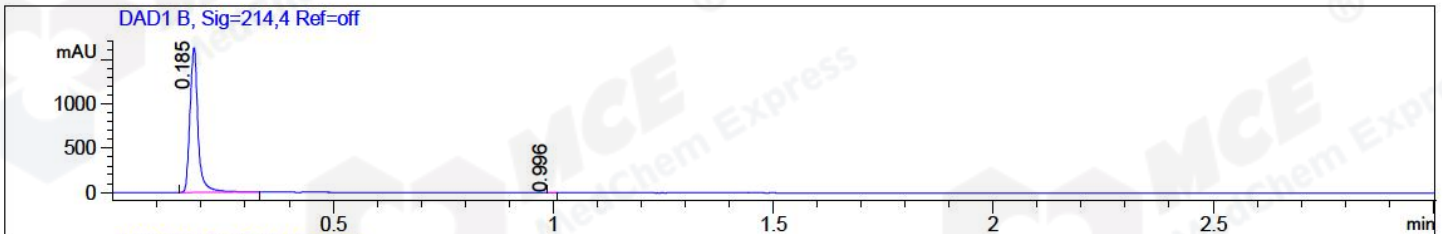


File ..1\DATA\2018\20181107\480\BIZ2018-N05-WYQ6.D Tgt Mass (CHM):
 Injection Date : 7 Nov 18 9:20 am +0800 Seq. Line : 3
 Sample Name : BIZ2018-N05-WYQ6 Location : P2-C-05
 Acq. Operator : LQ_1052 Inj : 1
 Spec. Reported : MS Integration Inj Volume : 1 ul
 Acq. Method : D:\Chem32\1\data\2018\20181107\480\1-POS-3MIN-1(110-1500)
 Analysis Method : D:\CHEM32\1\DATA\2018\20181107\480\1-POS-3MIN-1(110-1500)
 Catalog No : HY-B0879A Batch#34034 A-RP-314
 Method Info : Mobile Phase: A: water(0.01%TFA) B:ACN(0.01%TFA)
 Gradient: 5% to 95%B within 1.3 min
 Flow Rate :1.8ml/min
 Column :SunFire C18, 4.6*50mm,3.5um A-RP-314
 Oven Temperature : 45C



Integration Results for DAD1 B, Sig=214,4 Ref=off

RetTim	Width	Area	Height	Area%	MS (+)
0.18	0.02	2083.13	1633.34	99.93	292
1.00	0.01	1.45	1.86	0.07	197

Integration Results for DAD1 C, Sig=254,4 Ref=off

RetTim	Width	Area	Height	Area%	MS (+)
0.18	0.02	2196.52	1732.42	99.93	292
1.00	0.01	1.63	1.99	0.07	197

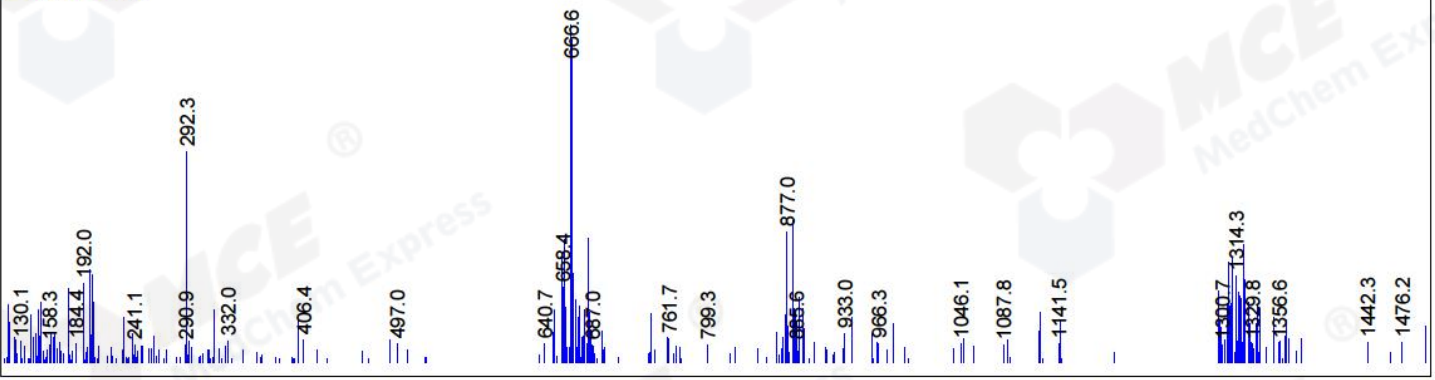
Integration Results for MSD1 TIC, MS File

RetTim	Width	Area	Height	Area%	MS (+)
0.20	0.02	49038.16	35660.46	37.33	666
0.24	0.03	82310.88	40839.01	62.67	666

Ret. Time: 0.20

<<<< POSITIVE SPECTRA >>>>

ES-API Positive



Ret. Time: 0.24

ES-API Positive

