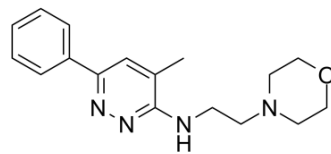


## Minaprine

<b>Cat. No.:</b>	HY-B0884
<b>CAS No.:</b>	25905-77-5
<b>Molecular Formula:</b>	C <sub>17</sub> H <sub>22</sub> N <sub>4</sub> O
<b>Molecular Weight:</b>	298.38
<b>Target:</b>	Monoamine Oxidase
<b>Pathway:</b>	Neuronal Signaling
<b>Storage:</b>	Please store the product under the recommended conditions in the Certificate of Analysis.



### SOLVENT & SOLUBILITY

#### In Vitro

DMSO : ≥ 35 mg/mL (117.30 mM)

\* "≥" means soluble, but saturation unknown.

Preparing Stock Solutions	Solvent Concentration	Mass	1 mg	5 mg	10 mg
	1 mM		3.3514 mL	16.7572 mL	33.5143 mL
	5 mM		0.6703 mL	3.3514 mL	6.7029 mL
	10 mM		0.3351 mL	1.6757 mL	3.3514 mL

Please refer to the solubility information to select the appropriate solvent.

### BIOLOGICAL ACTIVITY

#### Description

Minaprine is a reversible inhibitor of MAO-A; weakly inhibit acetylcholinesterase; an antidepressant for treatment of depression.

### REFERENCES

- [1]. Kan JP, et al. Effect of the antidepressant minaprine on both forms of monoamine oxidase in the rat. *Biochem Pharmacol.* 1986 Mar 15;35(6):973-8.
- [2]. Contreras JM, et al. Aminopyridazines as acetylcholinesterase inhibitors. *J Med Chem.* 1999 Feb 25;42(4):730-41.

---

**Caution: Product has not been fully validated for medical applications. For research use only.**

Tel: 609-228-6898

Fax: 609-228-5909

E-mail: [tech@MedChemExpress.com](mailto:tech@MedChemExpress.com)

Address: 1 Deer Park Dr, Suite Q, Monmouth Junction, NJ 08852, USA