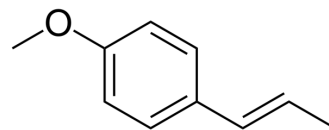


Anethole

Cat. No.:	HY-B0900		
CAS No.:	104-46-1		
Molecular Formula:	C ₁₀ H ₁₂ O		
Molecular Weight:	148.2		
Target:	Others		
Pathway:	Others		
Storage:	Pure form	-20°C	3 years
		4°C	2 years
	In solvent	-80°C	6 months
		-20°C	1 month



SOLVENT & SOLUBILITY

In Vitro

DMSO : ≥ 100 mg/mL (674.76 mM)

* "≥" means soluble, but saturation unknown.

Preparing Stock Solutions	Solvent Concentration	Mass		
		1 mg	5 mg	10 mg
	1 mM	6.7476 mL	33.7382 mL	67.4764 mL
	5 mM	1.3495 mL	6.7476 mL	13.4953 mL
	10 mM	0.6748 mL	3.3738 mL	6.7476 mL

Please refer to the solubility information to select the appropriate solvent.

In Vivo

- Add each solvent one by one: 10% DMSO >> 40% PEG300 >> 5% Tween-80 >> 45% saline
Solubility: ≥ 2.5 mg/mL (16.87 mM); Clear solution
- Add each solvent one by one: 10% DMSO >> 90% (20% SBE-β-CD in saline)
Solubility: ≥ 2.5 mg/mL (16.87 mM); Clear solution
- Add each solvent one by one: 10% DMSO >> 90% corn oil
Solubility: ≥ 2.5 mg/mL (16.87 mM); Clear solution

BIOLOGICAL ACTIVITY

Description

Anethole is a type of aromatic compound that occurs widely in nature, widely used as a flavoring substance.

CUSTOMER VALIDATION

-
- Int Immunopharmacol. 2021 Sep 13;100:108113.

See more customer validations on www.MedChemExpress.com

Caution: Product has not been fully validated for medical applications. For research use only.

Tel: 609-228-6898

Fax: 609-228-5909

E-mail: tech@MedChemExpress.com

Address: 1 Deer Park Dr, Suite Q, Monmouth Junction, NJ 08852, USA