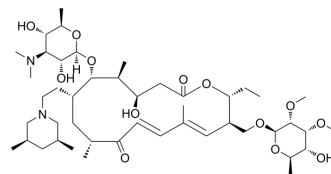


Tilmicosin

| | | | |
|---------------------------|--|-------|----------|
| Cat. No.: | HY-B0905 | | |
| CAS No.: | 108050-54-0 | | |
| Molecular Formula: | C ₄₆ H ₈₀ N ₂ O ₁₃ | | |
| Molecular Weight: | 869.13 | | |
| Target: | Bacterial; Antibiotic | | |
| Pathway: | Anti-infection | | |
| Storage: | Powder | -20°C | 3 years |
| | | 4°C | 2 years |
| | In solvent | -80°C | 6 months |
| | | -20°C | 1 month |



SOLVENT & SOLUBILITY

In Vitro

1M HCl : 100 mg/mL (115.06 mM; ultrasonic and adjust pH to 1 with HCl)
 DMSO : 100 mg/mL (115.06 mM; Need ultrasonic)

| Preparing Stock Solutions | Solvent Concentration | Mass | | |
|---------------------------|-----------------------|-----------|-----------|------------|
| | | 1 mg | 5 mg | 10 mg |
| | 1 mM | 1.1506 mL | 5.7529 mL | 11.5058 mL |
| | 5 mM | 0.2301 mL | 1.1506 mL | 2.3012 mL |
| | 10 mM | 0.1151 mL | 0.5753 mL | 1.1506 mL |

Please refer to the solubility information to select the appropriate solvent.

In Vivo

- Add each solvent one by one: 10% DMSO >> 40% PEG300 >> 5% Tween-80 >> 45% saline
 Solubility: ≥ 2.5 mg/mL (2.88 mM); Clear solution
- Add each solvent one by one: 10% DMSO >> 90% (20% SBE-β-CD in saline)
 Solubility: 2.5 mg/mL (2.88 mM); Suspended solution; Need ultrasonic
- Add each solvent one by one: 10% DMSO >> 90% corn oil
 Solubility: ≥ 2.5 mg/mL (2.88 mM); Clear solution

BIOLOGICAL ACTIVITY

Description

Tilmicosin is a macrolide antibiotic, is used for the research of bovine respiratory disease and ovine respiratory disease associated with Mannheimia (Pasteurella) haemolytica.

IC₅₀ & Target

Macrolide

CUSTOMER VALIDATION

- Microorganisms. 2024 Jan 25, 12(2), 256.
- Vet Microbiol. 2024 May, 292, 110046.

See more customer validations on www.MedChemExpress.com

REFERENCES

[1]. Micotil 300 New Animal Drug Application

Caution: Product has not been fully validated for medical applications. For research use only.

Tel: 609-228-6898

Fax: 609-228-5909

E-mail: tech@MedChemExpress.com

Address: 1 Deer Park Dr, Suite Q, Monmouth Junction, NJ 08852, USA