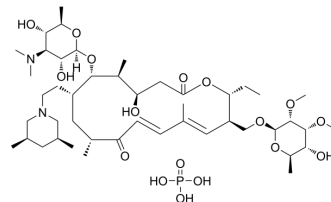


## Tilmicosin phosphate

Cat. No.:	HY-B0905A
CAS No.:	137330-13-3
Molecular Formula:	C <sub>46</sub> H <sub>83</sub> N <sub>2</sub> O <sub>17</sub> P
Molecular Weight:	967.13
Target:	Bacterial; Antibiotic
Pathway:	Anti-infection
Storage:	4°C, sealed storage, away from moisture * In solvent : -80°C, 6 months; -20°C, 1 month (sealed storage, away from moisture)



### SOLVENT & SOLUBILITY

#### In Vitro

DMSO : ≥ 100 mg/mL (103.40 mM)  
H<sub>2</sub>O : ≥ 100 mg/mL (103.40 mM)  
\* "≥" means soluble, but saturation unknown.

	Solvent Concentration	Mass	1 mg	5 mg	10 mg
Preparing Stock Solutions	1 mM		1.0340 mL	5.1699 mL	10.3399 mL
	5 mM		0.2068 mL	1.0340 mL	2.0680 mL
	10 mM		0.1034 mL	0.5170 mL	1.0340 mL

Please refer to the solubility information to select the appropriate solvent.

#### In Vivo

1. Add each solvent one by one: PBS  
Solubility: 100 mg/mL (103.40 mM); Clear solution; Need ultrasonic
2. Add each solvent one by one: 10% DMSO >> 40% PEG300 >> 5% Tween-80 >> 45% saline  
Solubility: ≥ 2.5 mg/mL (2.58 mM); Clear solution
3. Add each solvent one by one: 10% DMSO >> 90% (20% SBE-β-CD in saline)  
Solubility: ≥ 2.5 mg/mL (2.58 mM); Clear solution
4. Add each solvent one by one: 10% DMSO >> 90% corn oil  
Solubility: ≥ 2.5 mg/mL (2.58 mM); Clear solution

### BIOLOGICAL ACTIVITY

#### Description

Tilmicosin phosphate is a antibiotic, is used for the research of bovine respiratory disease and ovine respiratory disease associated with Mannheimia (Pasteurella) haemolytica.

---

## REFERENCES

---

- [1]. Galyean ML, et al. Effects of arrival medication with tilmicosin phosphate on health and performance of newly received beef cattle. J Anim Sci. 1995 May;73(5):1219-26.
- [2]. Fittipaldi N, et al. Assessment of the efficacy of tilmicosin phosphate to eliminate Actinobacillus pleuropneumoniae from carrier pigs. Can J Vet Res. 2005 Apr;69(2):146-50.
- 

**Caution: Product has not been fully validated for medical applications. For research use only.**

Tel: 609-228-6898

Fax: 609-228-5909

E-mail: [tech@MedChemExpress.com](mailto:tech@MedChemExpress.com)

Address: 1 Deer Park Dr, Suite Q, Monmouth Junction, NJ 08852, USA