

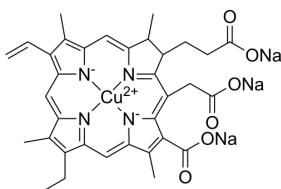
Chlorophyllin sodium copper salt

Cat. No.:	HY-B0911
CAS No.:	11006-34-1
Batch No.:	17297
Chemical Name:	Cuprate(3-), [(7S,8S)-3-carboxy-5-(carboxymethyl)-13-ethenyl-18-ethyl-7,8-dihydro-2,8,12,17-tetramethyl-21H,23H-porphine-7-propanoato(5-)-κN21,κN22,κN23,κN24]-, sodium (1:3), (SP-4-2)-

PHYSICAL AND CHEMICAL PROPERTIES

Molecular Formula:	C ₃₄ H ₃₁ CuN ₄ Na ₃ O ₆
Molecular Weight:	724.15
Storage:	4°C, sealed storage, away from moisture * In solvent : -80°C, 6 months; -20°C, 1 month (sealed storage, away from moisture)

Chemical Structure:



ANALYTICAL DATA

Appearance:	Green to black (Solid)
¹ H NMR Spectrum:	Consistent with structure
MS:	Consistent with structure
Purity:	≥95.0%
Total Copper (Cu):	4.67%
Free Copper (Cu):	≤0.25%
Conclusion:	The product has been tested and complies with the given specifications.

Caution: Product has not been fully validated for medical applications. For research use only.

Tel: 609-228-6898

Fax: 609-228-5909

E-mail: tech@MedChemExpress.com

Address: 1 Deer Park Dr, Suite Q, Monmouth Junction, NJ 08852, USA