

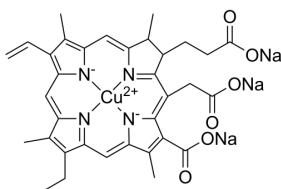
## Chlorophyllin sodium copper salt

Cat. No.:	HY-B0911
CAS No.:	11006-34-1
Batch No.:	41191
Chemical Name:	Cuprate(3-), [(7S,8S)-3-carboxy-5-(carboxymethyl)-13-ethenyl-18-ethyl-7,8-dihydro-2,8,12,17-tetramethyl-21H,23H-porphine-7-propanoato(5-)-κN21,κN22,κN23,κN24]-, sodium (1:3), (SP-4-2)-

### PHYSICAL AND CHEMICAL PROPERTIES

Molecular Formula:	C <sub>34</sub> H <sub>31</sub> CuN <sub>4</sub> Na <sub>3</sub> O <sub>6</sub>
Molecular Weight:	724.15
Storage:	4°C, sealed storage, away from moisture * In solvent : -80°C, 6 months; -20°C, 1 month (sealed storage, away from moisture)

#### Chemical Structure:



### ANALYTICAL DATA

Appearance:	Green to black (Solid)
Purity:	≥95.0%
Absorbance:	585
Extinction Ratio:	3.7
pH:	10.5
Loss on Drying:	2.6%
Total Copper:	4.63%
Free Copper:	0.0116%
Conclusion:	The product has been tested and complies with the given specifications.

**Caution: Product has not been fully validated for medical applications. For research use only.**

Tel: 609-228-6898

Fax: 609-228-5909

E-mail: tech@MedChemExpress.com

Address: 1 Deer Park Dr, Suite Q, Monmouth Junction, NJ 08852, USA