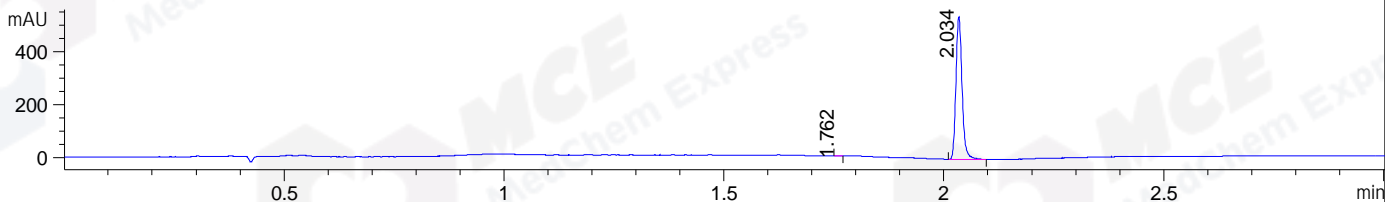
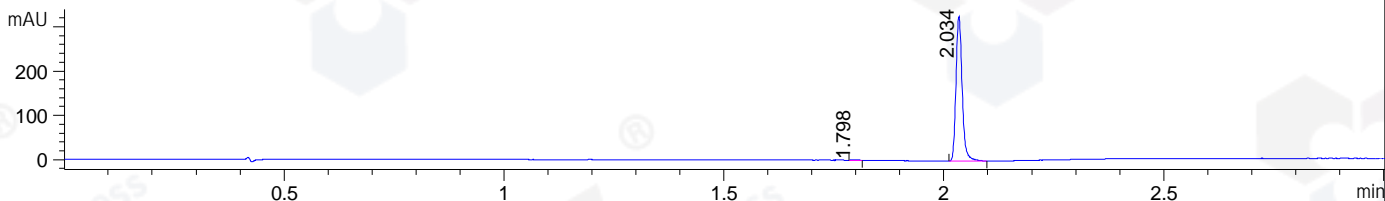


File ..\DATA\2019\20190829\713\CPK2019-829-22976.D Tgt Mass (CHM):  
Injection Date : 29 Aug 19 2:20 pm +0800 Seq. Line : 72  
Sample Name : CPK2019-829-22976 Location : P1-E-08  
Acq. Operator : ZJ\_1432 Inj : 1  
Spec. Reported : MS Integration Inj Volume : 1 ul  
Acq. Method : D:\Chem32\1\data\2019\20190829\713\1-POS-3MIN.M  
Analysis Method : D:\CHEM32\1\DATA\2019\20190829\713\1-POS-3MIN.M  
Catalog No : HY-B1029 Batch#22976  
Method Info : Mobile Phase: A: water(0.01%TFA) B:ACN(0.01%TFA)  
Gradient: 5% to 95%B within 1.3 min  
Flow Rate :1.8ml/min  
Column :SunFire C18, 4.6\*50mm,3.5um A-RP-433  
Oven Temperature : 45

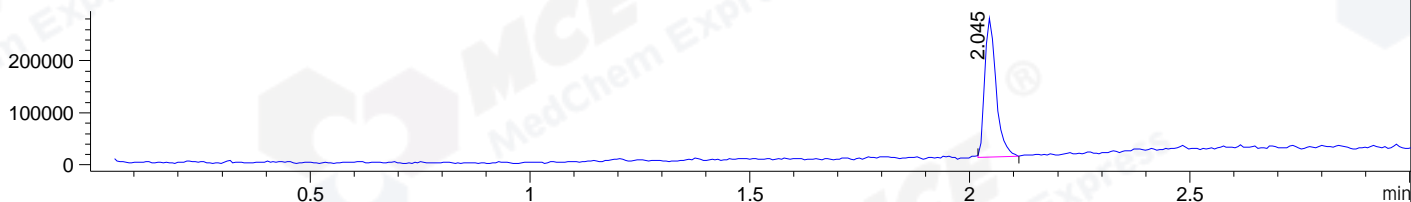
DAD1 B, Sig=214,4 Ref=off



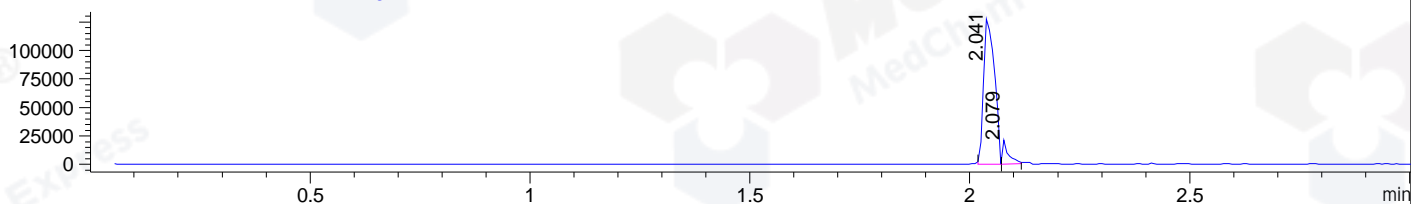
DAD1 C, Sig=254,4 Ref=off



MSD1 TIC, MS File ES-API, Pos, Scan, Frag: 70



Ion 338.466, MSD1 338.466, Target Mass 337.466 +H Positive, EIC=338.17:339.17



## Integration Results for DAD1 B, Sig=214,4 Ref=off

RetTim	Width	Area	Height	Area%	MS (+)
1.76	0.01	0.49	0.62	0.09	140
2.03	0.02	522.92	540.12	99.91	338

## Integration Results for DAD1 C, Sig=254,4 Ref=off

RetTim	Width	Area	Height	Area%	MS (+)
1.80	0.02	0.86	0.89	0.27	141
2.03	0.02	319.84	327.11	99.73	338

## Integration Results for MSD1 TIC, MS File

RetTim	Width	Area	Height	Area%	MS (+)
2.05	0.03	478184.91	266930.00	100.00	338

Ret. Time: 2.05

<<<< POSITIVE SPECTRA >>>>

ES-API Positive

