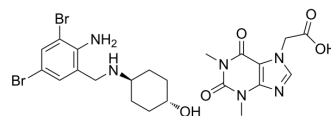


Ambroxol (acefylline)

Cat. No.:	HY-B1039C
CAS No.:	96989-76-3
Molecular Formula:	C ₂₂ H ₂₈ Br ₂ N ₆ O ₅
Molecular Weight:	616.3
Target:	Glucosidase; Autophagy
Pathway:	Metabolic Enzyme/Protease; Autophagy
Storage:	Please store the product under the recommended conditions in the Certificate of Analysis.



BIOLOGICAL ACTIVITY

Description

Ambroxol (NA-872) acefylline, an active metabolite of the proagent Bromhexine, has potent expectorant effects. Ambroxol acefylline is a glucocerebrosidase (GCase) chaperone and increases glucocerebrosidase activity. Ambroxol acefylline induces lung autophagy and has the potential for Parkinson disease and neuronopathic Gaucher disease research^{[1][2]}.

CUSTOMER VALIDATION

- Cell Rep. 2021 Jul 20;36(3):109404.
- Evid-Based Compl Alt. 16 Jun 2022.

See more customer validations on www.MedChemExpress.com

REFERENCES

- [1]. Vojo Deretic, et al. Enhancement of lung levels of antibiotics by ambroxol and bromhexine. *Expert Opin Drug Metab Toxicol*. 2019 Mar;15(3):213-218.
- [2]. Anna Migdalska-Richards, et al. Ambroxol effects in glucocerebrosidase and α -synuclein transgenic mice. *Ann Neurol*. 2016 Nov;80(5):766-775.

Caution: Product has not been fully validated for medical applications. For research use only.

Tel: 609-228-6898

Fax: 609-228-5909

E-mail: tech@MedChemExpress.com

Address: 1 Deer Park Dr, Suite Q, Monmouth Junction, NJ 08852, USA