

File ..a\2018\20180308\20180308\BIZ2018-308-WYQ5.D Tgt Mass (CHM):

Injection Date : 8 Mar 18 2:37 pm +0800 Seq. Line : 69

Sample Name : BIZ2018-308-WYQ5 Location : P1-E-05

Acq. Operator : SYSTEM Inj : 1

Spec. Reported : MS Integration Inj Volume : 1 ul

Acq. Method : D:\LCMS03\Data\2018\20180308\20180308\1-POS-3MIN.M

Analysis Method : D:\LCMS03\Data\2018\20180308\20180308\1-POS-3MIN.M

Catalog No : HY-B1058 Batch#28935

Method Info : Mobile Phase: A: water(0.01%TFA) B:ACN(0.01%TFA)

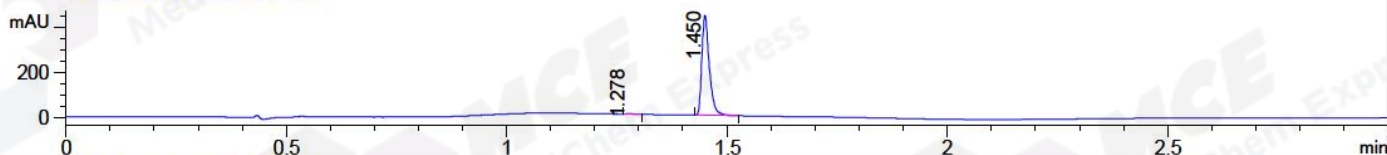
Gradient: 5% to 95%B within 1.3 min

Flow Rate :1.8ml/min

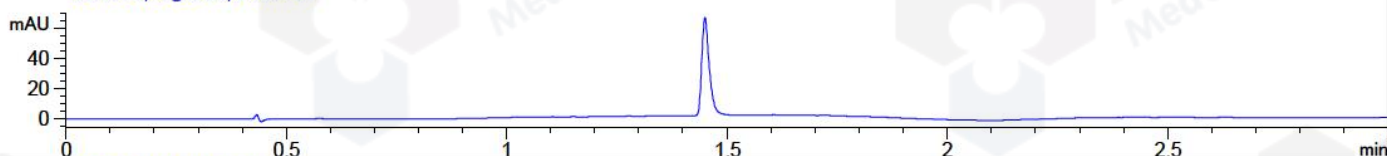
Column :SunFire C18, 4.6*50mm,3.5um A-RP-186

Oven Temperature : 45C

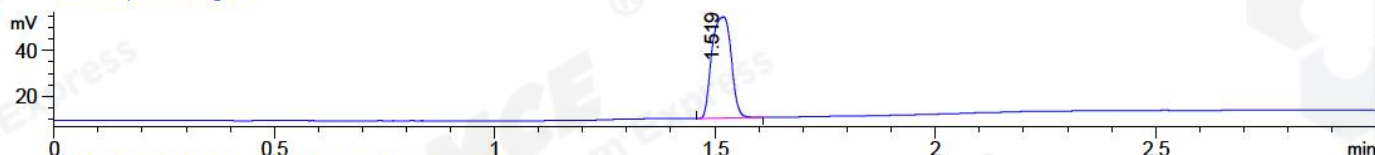
DAD1 A, Sig=214,4 Ref=off



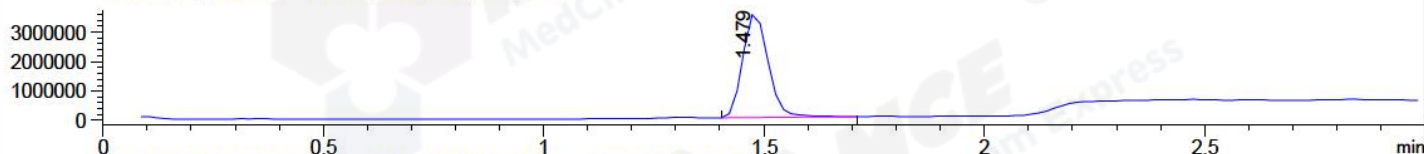
DAD1 B, Sig=254,4 Ref=off



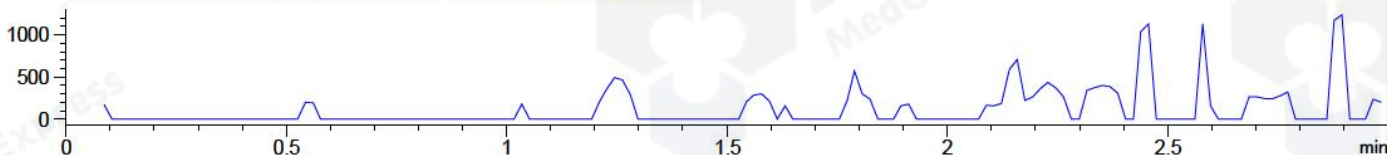
ELS1 A, ELSD Signal



MSD1 TIC, MS File ES-API, Pos, Scan, Frag: 70



Ion 388.1, MSD1 388.1, Target Mass 387.1 +H Positive, EIC=387.8:388.8



Integration Results for DAD1 A, Sig=214,4 Ref=off

RetTim	Width	Area	Height	Area%	MS (+)
1.28	0.02	1.93	1.84	0.37	248
1.45	0.02	518.77	440.48	99.63	352

Integration Results for DAD1 B, Sig=254,4 Ref=off

RetTim	Width	Area	Height	Area%	MS (+)
--------	-------	------	--------	-------	--------

Integration Results for ELS1 A, ELSD Signal

RetTim	Width	Area	Height	Area%	MS (+)
1.52	0.05	134.41	44.19	100.00	352

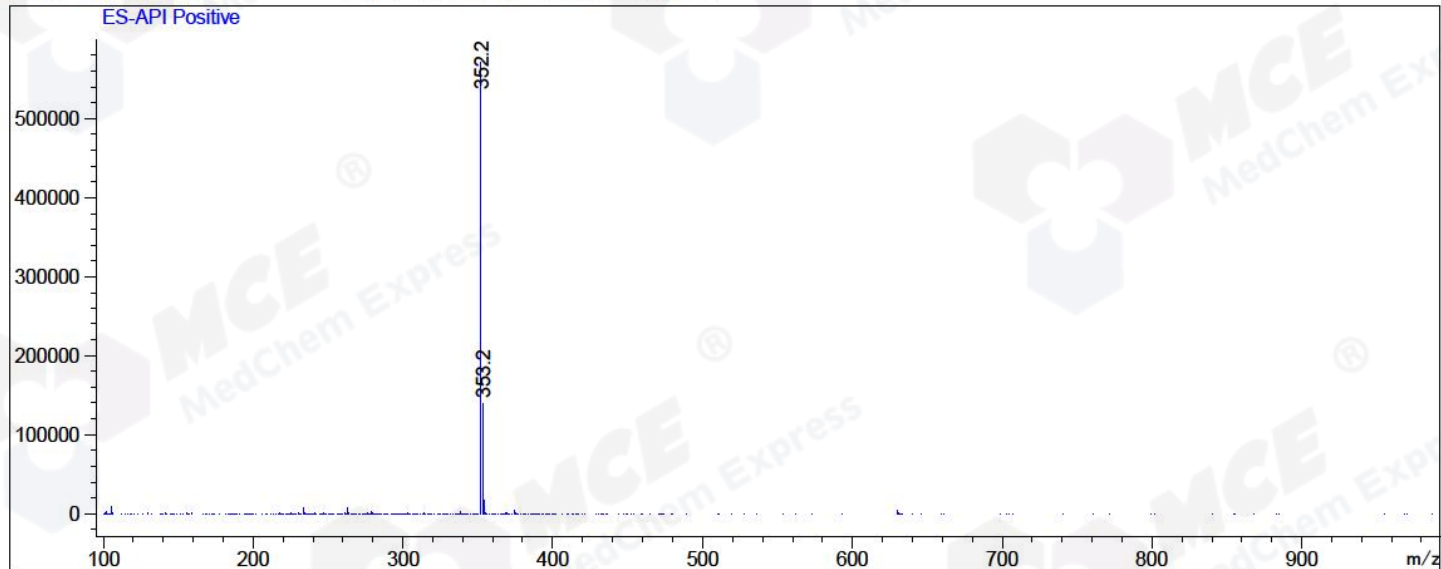
Integration Results for MSD1 TIC, MS File

RetTim	Width	Area	Height	Area%	MS (+)
--------	-------	------	--------	-------	--------

1.48 0.06 14130121.00 3553711.25 100.00 352

Ret. Time: 1.48

<<<< POSITIVE SPECTRA >>>>



*** End of Report ***