

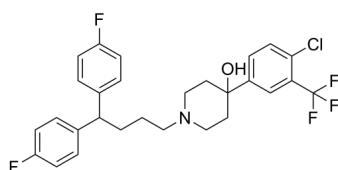
Penfluridol

Cat. No.: HY-B1077
Batch No.: 17270
CAS No.: 26864-56-2
Molecular Formula: C₂₈H₂₇ClF₅NO

ANALYTICAL DATA

Theoretical: C(64.18%), H(5.19%), N(2.67%)
Result: C(64.37%), H(5.06%), N(2.70%)

Chemical Structure:



Caution: Product has not been fully validated for medical applications. For research use only.

Tel: 609-228-6898

Fax: 609-228-5909

E-mail: tech@MedChemExpress.com

Address: 1 Deer Park Dr, Suite Q, Monmouth Junction, NJ 08852, USA