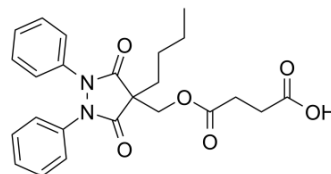


## Suxibuzone

<b>Cat. No.:</b>	HY-B1079		
<b>CAS No.:</b>	27470-51-5		
<b>Molecular Formula:</b>	C <sub>24</sub> H <sub>26</sub> N <sub>2</sub> O <sub>6</sub>		
<b>Molecular Weight:</b>	438.47		
<b>Target:</b>	Others		
<b>Pathway:</b>	Others		
<b>Storage:</b>	Powder	-20°C	3 years
		4°C	2 years
	In solvent	-80°C	6 months
		-20°C	1 month



### SOLVENT & SOLUBILITY

#### In Vitro

DMSO : ≥ 100 mg/mL (228.07 mM)

\* "≥" means soluble, but saturation unknown.

Preparing Stock Solutions	Solvent Concentration	Mass		
		1 mg	5 mg	10 mg
	1 mM	2.2807 mL	11.4033 mL	22.8066 mL
	5 mM	0.4561 mL	2.2807 mL	4.5613 mL
	10 mM	0.2281 mL	1.1403 mL	2.2807 mL

Please refer to the solubility information to select the appropriate solvent.

#### In Vivo

- Add each solvent one by one: 10% DMSO >> 40% PEG300 >> 5% Tween-80 >> 45% saline  
Solubility: ≥ 2.5 mg/mL (5.70 mM); Clear solution
- Add each solvent one by one: 10% DMSO >> 90% (20% SBE-β-CD in saline)  
Solubility: ≥ 2.5 mg/mL (5.70 mM); Clear solution
- Add each solvent one by one: 10% DMSO >> 90% corn oil  
Solubility: ≥ 2.5 mg/mL (5.70 mM); Clear solution

### BIOLOGICAL ACTIVITY

#### Description

Suxibuzone is a drug used for joint and muscular pain, is a prodrug of the non steroidal anti inflammatory drug Phenylbutazone.

---

**Caution: Product has not been fully validated for medical applications. For research use only.**

Tel: 609-228-6898

Fax: 609-228-5909

E-mail: [tech@MedChemExpress.com](mailto:tech@MedChemExpress.com)

Address: 1 Deer Park Dr, Suite Q, Monmouth Junction, NJ 08852, USA