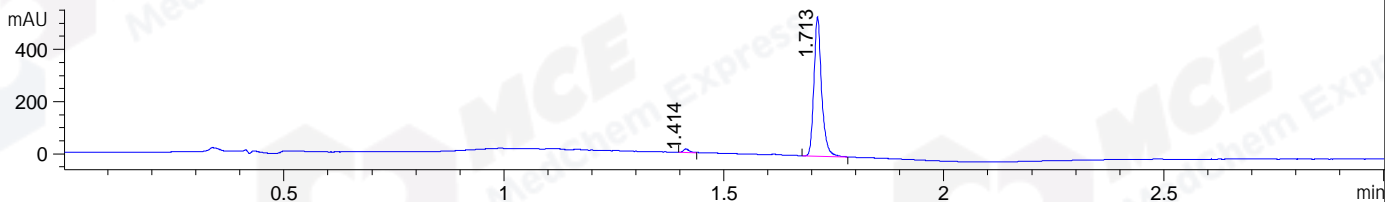
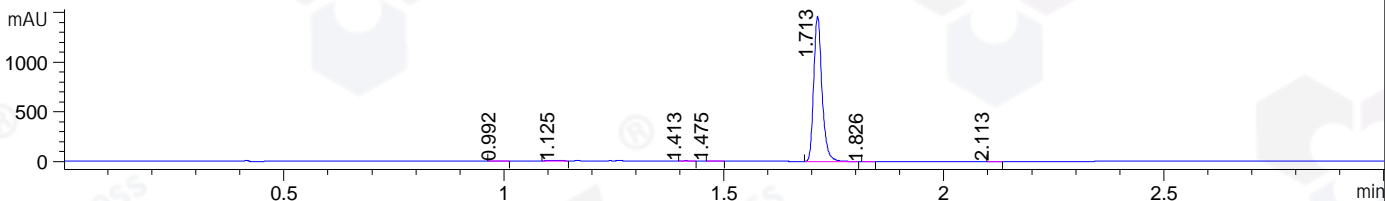


File ..\DATA\2019\20190823\705\CPK2019-822-22806.D Tgt Mass (CHM):
 Injection Date : 24 Aug 19 9:35 am +0800 Seq. Line : 8
 Sample Name : CPK2019-822-22806 Location : P1-C-02
 Acq. Operator : ZJ_1432 Inj : 1
 Spec. Reported : MS Integration Inj Volume : 5 ul
 Acq. Method : D:\Chem32\1\data\2019\20190823\705\1-POS-3MIN.M
 Analysis Method : D:\CHEM32\1\DATA\2019\20190823\705\1-POS-3MIN.M
 Catalog No : HY-B1083 Batch#22806
 Method Info : Mobile Phase: A: water(0.01%TFA) B:ACN(0.01%TFA)
 Gradient: 5% to 95%B within 1.3 min
 Flow Rate :1.8ml/min
 Column :SunFire C18, 4.6*50mm,3.5um A-RP-433
 Oven Temperature : 45□

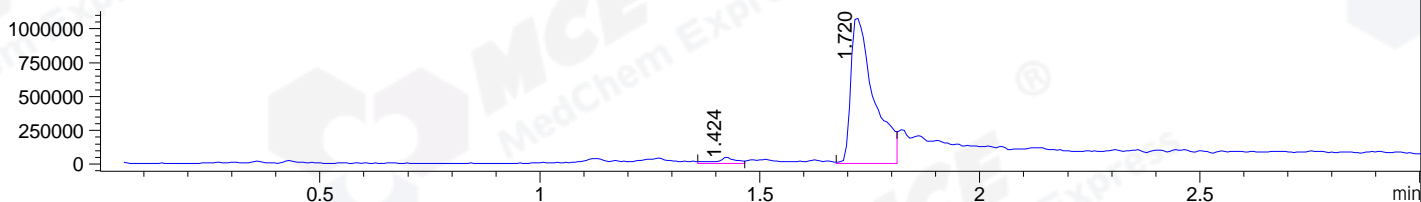
DAD1 B, Sig=214,4 Ref=off



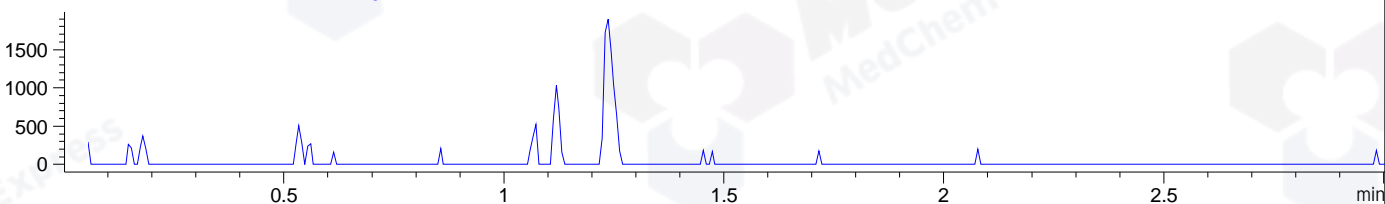
DAD1 C, Sig=254,4 Ref=off



MSD1 TIC, MS File ES-API, Pos, Scan, Frag: 70



Ion 276.3287, MSD1 276.3287, Target Mass 275.3287 +H Positive, EIC=276.03:277.03



Integration Results for DAD1 B, Sig=214,4 Ref=off

RetTim	Width	Area	Height	Area%	MS (+)
1.41	0.01	12.05	13.63	1.82	390
1.71	0.02	649.51	535.05	98.18	178

Integration Results for DAD1 C, Sig=254,4 Ref=off

RetTim	Width	Area	Height	Area%	MS (+)
0.99	0.02	2.23	1.68	0.11	288
1.13	0.04	9.81	4.60	0.51	288
1.41	0.01	3.11	3.52	0.16	390
1.48	0.01	2.41	2.75	0.12	351
1.71	0.02	1919.88	1461.71	98.95	178
1.83	0.01	0.92	1.03	0.05	178
2.11	0.02	1.91	1.66	0.10	178

Integration Results for MSD1 TIC, MS File

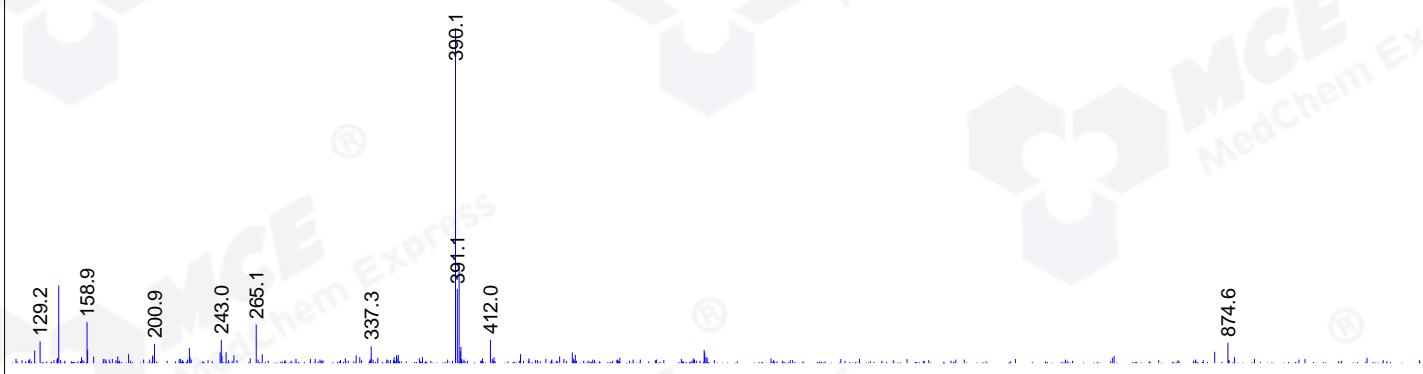
RetTim	Width	Area	Height	Area%	MS (+)
--------	-------	------	--------	-------	--------

1.42	0.05	138970.88	46957.92	3.42	390
1.72	0.05	3919380.00	1078999.38	96.58	178

Ret. Time: 1.42

<<<< POSITIVE SPECTRA >>>>

ES-API Positive



Ret. Time: 1.72

ES-API Positive

