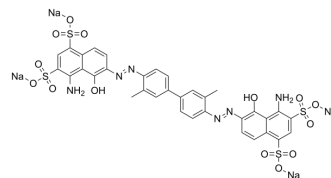


Evans Blue

Cat. No.:	HY-B1102		
CAS No.:	314-13-6		
Molecular Formula:	C ₃₄ H ₂₄ N ₆ Na ₄ O ₁₄ S ₄		
Molecular Weight:	960.81		
Target:	Others		
Pathway:	Others		
Storage:	Powder	-20°C	3 years
		4°C	2 years
	In solvent	-80°C	6 months
		-20°C	1 month



SOLVENT & SOLUBILITY

In Vitro

H₂O : 33.33 mg/mL (34.69 mM; Need ultrasonic)
 DMSO : ≥ 25 mg/mL (26.02 mM)
 * "≥" means soluble, but saturation unknown.

Preparing Stock Solutions	Solvent		Mass		
	Concentration		1 mg	5 mg	10 mg
	1 mM		1.0408 mL	5.2039 mL	10.4079 mL
	5 mM		0.2082 mL	1.0408 mL	2.0816 mL
	10 mM		0.1041 mL	0.5204 mL	1.0408 mL

Please refer to the solubility information to select the appropriate solvent.

In Vivo

- Add each solvent one by one: 10% DMSO >> 40% PEG300 >> 5% Tween-80 >> 45% saline
Solubility: ≥ 2.5 mg/mL (2.60 mM); Clear solution
- Add each solvent one by one: 10% DMSO >> 90% (20% SBE-β-CD in saline)
Solubility: ≥ 2.5 mg/mL (2.60 mM); Clear solution
- Add each solvent one by one: 10% DMSO >> 90% corn oil
Solubility: 2.5 mg/mL (2.60 mM); Clear solution; Need warming

BIOLOGICAL ACTIVITY

Description

Evans Blue is a potent inhibitor of L-glutamate uptake via the membrane bound excitatory amino acid transporter (EAAT). Able to antagonize AMPA and kainate receptor mediated currents (IC₅₀ values are 220 and 150 nM, respectively). IC₅₀ value: 220/150 nM Target: L-glutamate uptake receptor Evans blue is a biological dye, for detection of cell survival. Evans Blue can not penetrate healthy cell membrane, but can penetrate into death cell. Binds with high affinity to serum albumin.

CUSTOMER VALIDATION

- J Biomed Opt. 2019 Jan;24(1):1-8.

See more customer validations on www.MedChemExpress.com

Caution: Product has not been fully validated for medical applications. For research use only.

Tel: 609-228-6898

Fax: 609-228-5909

E-mail: tech@MedChemExpress.com

Address: 1 Deer Park Dr, Suite Q, Monmouth Junction, NJ 08852, USA