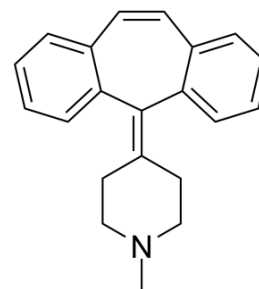


## Cyproheptadine hydrochloride sesquihydrate

<b>Cat. No.:</b>	HY-B1165		
<b>CAS No.:</b>	41354-29-4		
<b>Molecular Formula:</b>	C <sub>21</sub> H <sub>21</sub> N · 3/2H <sub>2</sub> O · HCl		
<b>Molecular Weight:</b>	350.88		
<b>Target:</b>	5-HT Receptor; Histamine Receptor		
<b>Pathway:</b>	GPCR/G Protein; Neuronal Signaling; Immunology/Inflammation		
<b>Storage:</b>	Powder	-20°C	3 years
		4°C	2 years
	In solvent	-80°C	6 months
		-20°C	1 month



H-Cl  
1.5H<sub>2</sub>O

### SOLVENT & SOLUBILITY

#### In Vitro

DMSO : 33.33 mg/mL (94.99 mM; Need ultrasonic)  
H<sub>2</sub>O : 0.67 mg/mL (1.91 mM; Need ultrasonic)

Preparing Stock Solutions	Solvent Concentration	Mass		
		1 mg	5 mg	10 mg
	1 mM	2.8500 mL	14.2499 mL	28.4998 mL
	5 mM	0.5700 mL	2.8500 mL	5.7000 mL
	10 mM	0.2850 mL	1.4250 mL	2.8500 mL

Please refer to the solubility information to select the appropriate solvent.

#### In Vivo

- Add each solvent one by one: 10% DMSO >> 40% PEG300 >> 5% Tween-80 >> 45% saline  
Solubility: ≥ 3 mg/mL (8.55 mM); Clear solution
- Add each solvent one by one: 10% DMSO >> 90% (20% SBE-β-CD in saline)  
Solubility: ≥ 3 mg/mL (8.55 mM); Clear solution
- Add each solvent one by one: 10% DMSO >> 90% corn oil  
Solubility: ≥ 3 mg/mL (8.55 mM); Clear solution

### BIOLOGICAL ACTIVITY

#### Description

Cyproheptadine hydrochloride sesquihydrate is an antihistamine and is an antagonist of serotonin and histamine2.

#### IC<sub>50</sub> & Target

5-HT<sub>2</sub> Receptor

### CUSTOMER VALIDATION

- 
- PLoS Negl Trop Dis. 2019 Aug 20;13(8):e0007681.

See more customer validations on [www.MedChemExpress.com](http://www.MedChemExpress.com)

**Caution: Product has not been fully validated for medical applications. For research use only.**

Tel: 609-228-6898

Fax: 609-228-5909

E-mail: [tech@MedChemExpress.com](mailto:tech@MedChemExpress.com)

Address: 1 Deer Park Dr, Suite Q, Monmouth Junction, NJ 08852, USA