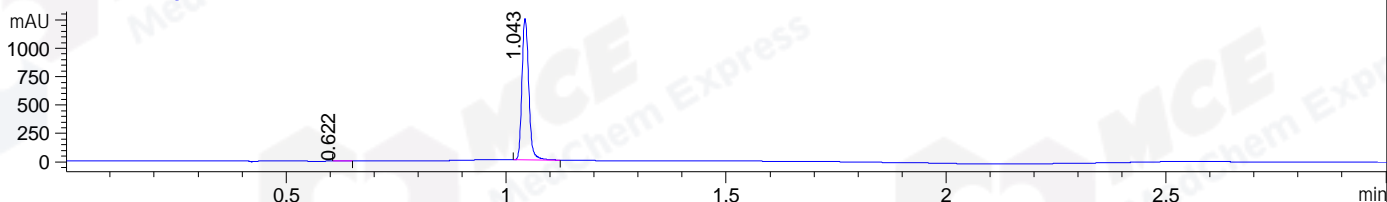
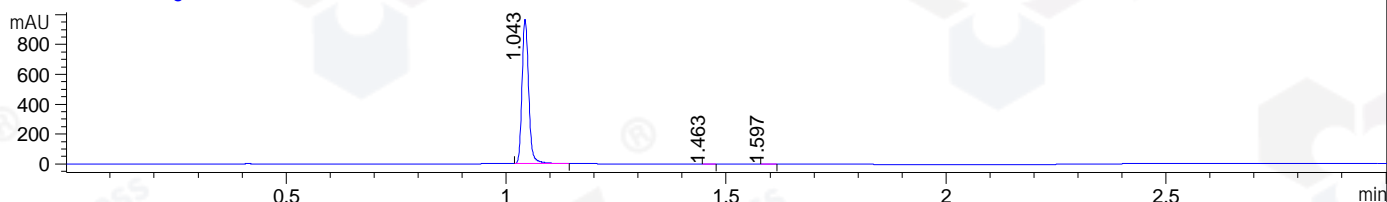


File ..DATA\2021\20210220\1280\CPK2021-220-17631.D Tgt Mass (CHM):
 Injection Date : 20 Feb 21 7:15 pm +0800 Seq. Line : 44
 Sample Name : CPK2021-220-17631 Location : P1-E-04
 Acq. Operator : yrz_1364 Inj : 1
 Spec. Reported : MS Integration Inj Volume : 1 ul
 Acq. Method : D:\Chem32\1\data\2021\20210220\1280\1-POS-3MIN.M
 Analysis Method : D:\CHEM32\1\DATA\2021\20210220\1280\1-POS-3MIN.M
 CAS NO. : 6398-98-7
 Method Info : Mobile Phase: A: water(0.01%TFA) B:ACN(0.01%TFA)
 Gradient: 5% to 95%B within 1.3 min
 Flow Rate :1.8ml/min
 Column :SunFire C18, 4.6*50mm,3.5um A-RP-698

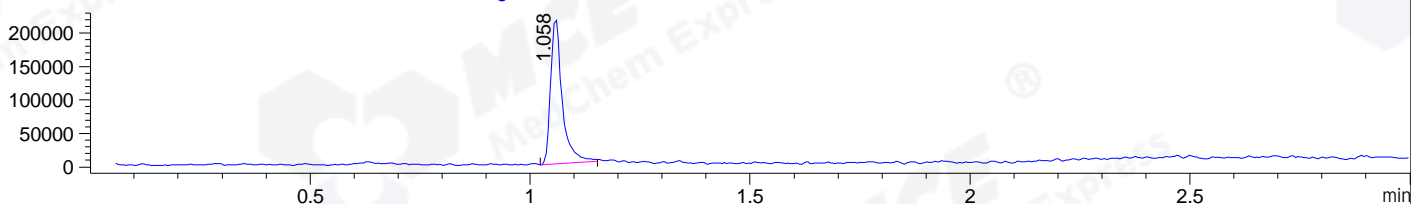
DAD1 B, Sig=214,4 Ref=off



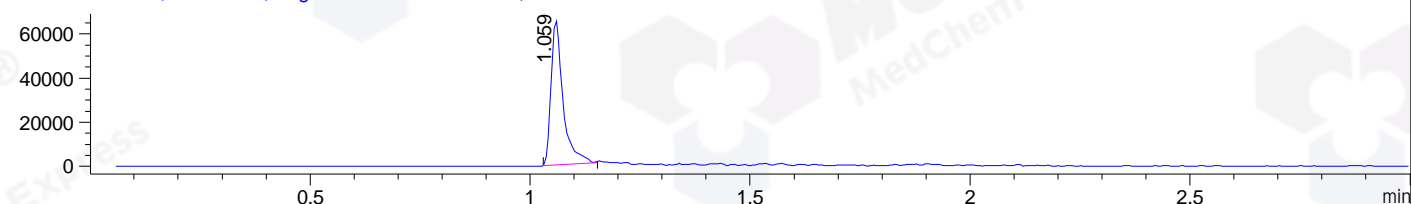
DAD1 C, Sig=254,4 Ref=off



MSD1 TIC, MS File ES-API, Pos, Scan, Frag: 70



Ion 356, MSD1 356, Target Mass 355 +H Positive, EIC=355.7:356.7



Integration Results for DAD1 B, Sig=214,4 Ref=off

RetTim	Width	Area	Height	Area%	MS(+)
0.62	0.02	3.66	3.06	0.27	166
1.04	0.02	1342.81	1247.65	99.73	356

Integration Results for DAD1 C, Sig=254,4 Ref=off

RetTim	Width	Area	Height	Area%	MS(+)
1.04	0.02	1014.12	967.94	99.92	356
1.46	0.02	0.38	0.36	0.04	ND
1.60	0.02	0.48	0.42	0.05	ND

Integration Results for MSD1 TIC, MS File

RetTim	Width	Area	Height	Area%	MS(+)
1.06	0.03	396256.53	216545.73	100.00	356

Ret. Time: 1.06

<<<< POSITIVE SPECTRA >>>>

