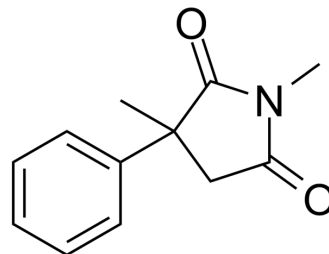


Methsuximide

Cat. No.:	HY-B1376
CAS No.:	77-41-8
Molecular Formula:	C ₁₂ H ₁₃ NO ₂
Molecular Weight:	203.24
Target:	Others
Pathway:	Others
Storage:	Powder -20°C 3 years 4°C 2 years In solvent -80°C 6 months -20°C 1 month



SOLVENT & SOLUBILITY

In Vitro	DMSO : 100 mg/mL (492.03 mM; Need ultrasonic)					
	Preparing Stock Solutions	<div>Solvent Concentration</div>	Mass	1 mg	5 mg	10 mg
		1 mM	4.9203 mL	24.6015 mL	49.2029 mL	
		5 mM	0.9841 mL	4.9203 mL	9.8406 mL	
		10 mM	0.4920 mL	2.4601 mL	4.9203 mL	
Please refer to the solubility information to select the appropriate solvent.						
In Vivo	1. Add each solvent one by one: 10% DMSO >> 40% PEG300 >> 5% Tween-80 >> 45% saline Solubility: ≥ 2.5 mg/mL (12.30 mM); Clear solution					
	2. Add each solvent one by one: 10% DMSO >> 90% (20% SBE-β-CD in saline) Solubility: ≥ 2.5 mg/mL (12.30 mM); Clear solution					

BIOLOGICAL ACTIVITY

Description	Methsuximide is an anticonvulsant agent. Methsuximide is effective in petit mal, psychomotor and focal motor attacks ^[1] .
-------------	---

REFERENCES

[1]. MARY LOUISE SCHOLL, et al. Celontin - a New Anticonvulsant.

Caution: Product has not been fully validated for medical applications. For research use only.

Tel: 609-228-6898

Fax: 609-228-5909

E-mail: tech@MedChemExpress.com

Address: 1 Deer Park Dr, Suite Q, Monmouth Junction, NJ 08852, USA