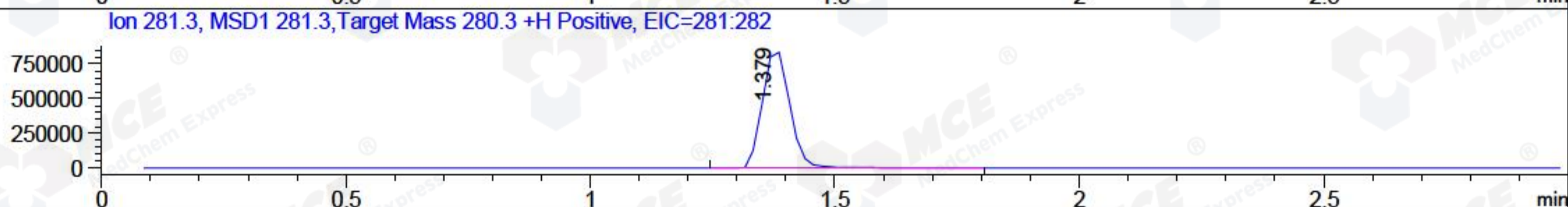
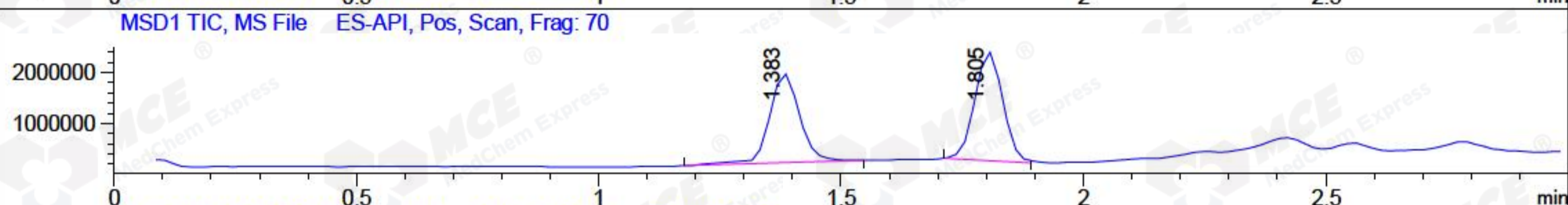
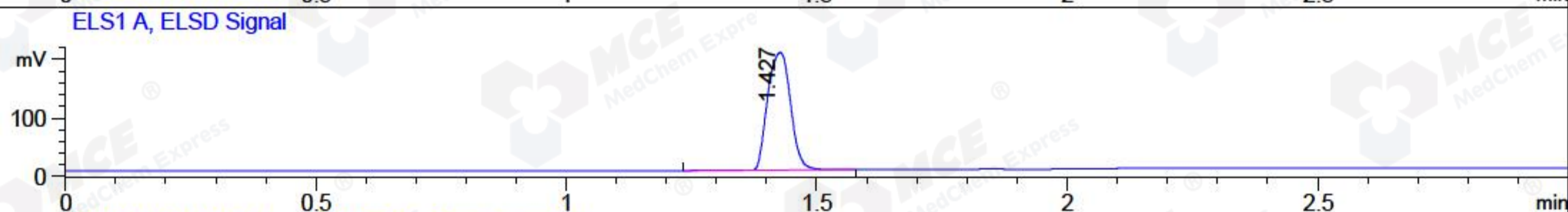
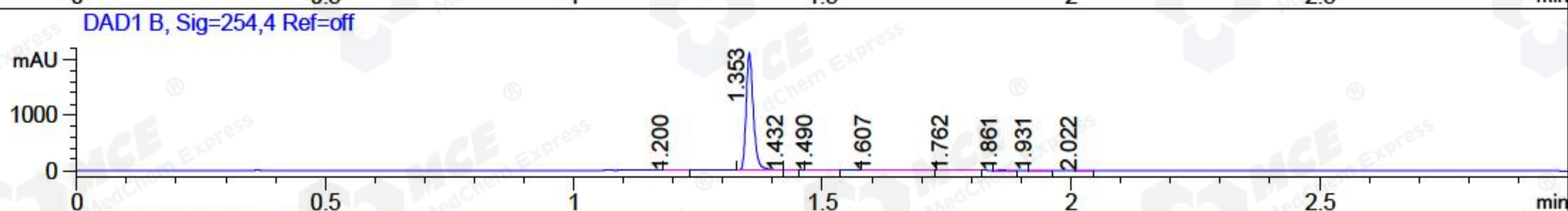
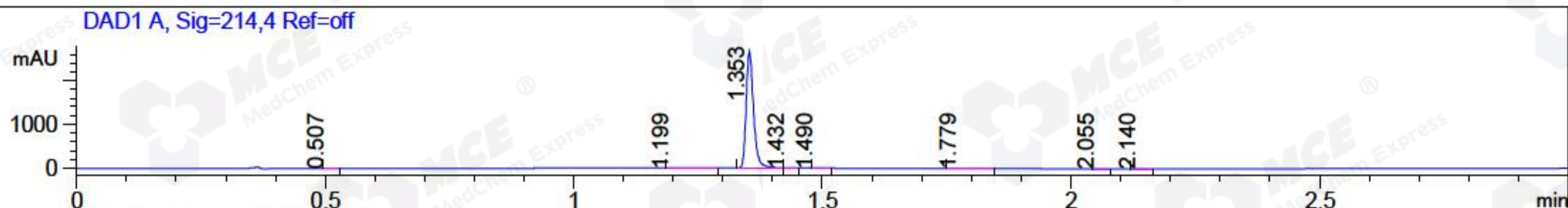


File ..\2018\20180427\20180427\CPK2018-426-17530.D Tgt Mass (CHM):  
Injection Date : 27 Apr 18 9:10 pm +0800 Seq. Line : 122  
Sample Name : CPK2018-426-17530 Location : P2-F-04  
Acq. Operator : SYSTEM Inj : 1  
Spec. Reported : MS Integration Inj Volume : 2 ul  
Acq. Method : D:\LCMS03\Data\2018\20180427\20180427\1-POS-3MIN.M  
Analysis Method : D:\LCMS03\Data\2018\20180427\20180427\1-POS-3MIN.M  
Catalog No : HY-B1387 Batch#17530  
Method Info : Mobile Phase: A: water(0.01%TFA) B:ACN(0.01%TFA)  
Gradient: 5% to 95%B within 1.3 min  
Flow Rate :1.8ml/min  
Column :SunFire C18, 4.6\*50mm,3.5um A-RP-186  
Oven Temperature : 45C



Integration Results for DAD1 A, Sig=214,4 Ref=off

RetTim	Width	Area	Height	Area%	MS (+)
0.51	0.02	4.63	4.23	0.17	225
1.20	0.02	3.69	2.88	0.13	225
1.35	0.02	2710.89	2644.58	99.01	281
1.43	0.01	3.00	3.51	0.11	281
1.49	0.01	1.74	2.00	0.06	225
1.78	0.02	8.04	5.25	0.29	225
2.06	0.02	3.27	3.40	0.12	225
2.14	0.02	2.74	2.68	0.10	225

Integration Results for DAD1 B, Sig=254,4 Ref=off

RetTim	Width	Area	Height	Area%	MS (+)
1.20	0.02	2.03	1.98	0.09	225
1.35	0.02	2124.55	2105.82	99.13	281
1.43	0.01	1.60	1.95	0.07	281
1.49	0.02	2.14	1.59	0.10	225
1.61	0.02	6.99	4.23	0.33	225
1.76	0.02	3.80	2.42	0.18	225

1.86	0.02	0.73	0.52	0.03	225
1.93	0.02	0.60	0.48	0.03	225
2.02	0.02	0.75	0.77	0.03	225

## Integration Results for ELS1 A, ELSD Signal

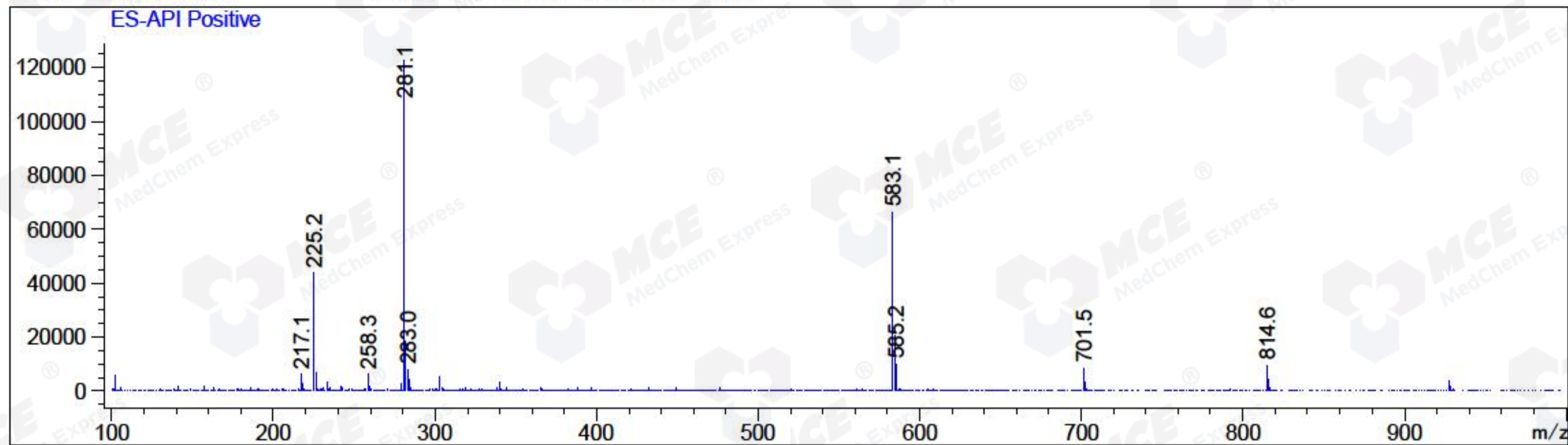
RetTim	Width	Area	Height	Area%	MS (+)
1.43	0.05	638.67	200.99	100.00	281

## Integration Results for MSD1 TIC, MS File

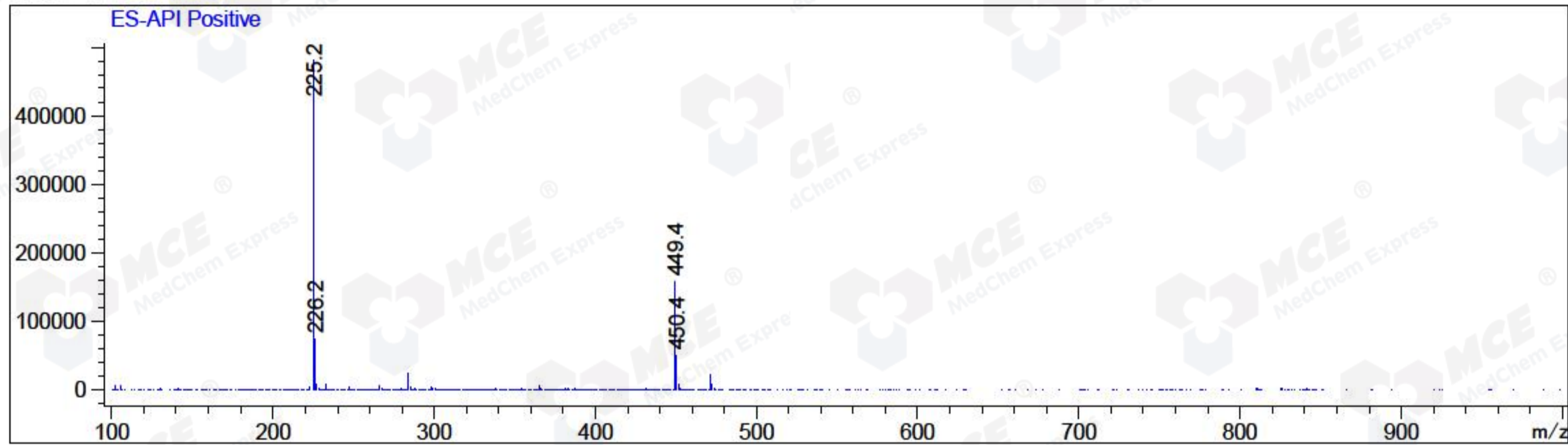
RetTim	Width	Area	Height	Area%	MS (+)
1.38	0.07	7552319.50	1758806.50	46.95	281
1.81	0.07	8532944.00	2164962.75	53.05	225

Ret. Time: 1.38

<<<< POSITIVE SPECTRA >>>>



Ret. Time: 1.81



\*\*\* End of Report \*\*\*