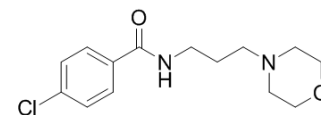


Eprobemide

| | | | |
|--------------------|---|-------|----------|
| Cat. No.: | HY-B1413 | | |
| CAS No.: | 87940-60-1 | | |
| Molecular Formula: | C ₁₄ H ₁₉ ClN ₂ O ₂ | | |
| Molecular Weight: | 282.77 | | |
| Target: | Monoamine Oxidase | | |
| Pathway: | Neuronal Signaling | | |
| Storage: | Powder | -20°C | 3 years |
| | | 4°C | 2 years |
| | In solvent | -80°C | 6 months |
| | | -20°C | 1 month |



SOLVENT & SOLUBILITY

In Vitro

DMSO : ≥ 125 mg/mL (442.06 mM)

* "≥" means soluble, but saturation unknown.

| Preparing Stock Solutions | Solvent Concentration | Mass | | |
|---------------------------|-----------------------|-----------|------------|------------|
| | | 1 mg | 5 mg | 10 mg |
| | 1 mM | 3.5364 mL | 17.6822 mL | 35.3644 mL |
| | 5 mM | 0.7073 mL | 3.5364 mL | 7.0729 mL |
| | 10 mM | 0.3536 mL | 1.7682 mL | 3.5364 mL |

Please refer to the solubility information to select the appropriate solvent.

In Vivo

- Add each solvent one by one: **10% DMSO >> 40% PEG300 >> 5% Tween-80 >> 45% saline**
Solubility: ≥ 2.08 mg/mL (7.36 mM); Clear solution
- Add each solvent one by one: **10% DMSO >> 90% (20% SBE-β-CD in saline)**
Solubility: ≥ 2.08 mg/mL (7.36 mM); Clear solution
- Add each solvent one by one: **10% DMSO >> 90% corn oil**
Solubility: ≥ 2.08 mg/mL (7.36 mM); Clear solution

BIOLOGICAL ACTIVITY

Description

Eprobemide is a non-competitive reversible inhibitor of **monoamine oxidase A**.

IC₅₀ & Target

Monoamine oxidase A^{[1][2]}

In Vitro

Eprobemide is a pharmaceutical drug that is used as an antidepressant. Eprobemide is a non-competitive reversible

inhibitor of monoamine oxidase A that exhibits selective action on serotonin deamination^{[1][2]}.

REFERENCES

- [1]. Gol'dina OA, et al. The action of befol and its derivatives on monoamine oxidase of different origins. *Biull Eksp Biol Med*. 1991 Mar;111(3):279-80.
- [2]. Donskaya, et al. Antidepressant Befol Synthesized Via Interaction of 4-Chloro-N-(3-chloropropyl)benzamide with Morpholine. *Pharmaceutical Chemistry Journal*, 2004 Jun; 38(7): 381-384.
-

Caution: Product has not been fully validated for medical applications. For research use only.

Tel: 609-228-6898

Fax: 609-228-5909

E-mail: tech@MedChemExpress.com

Address: 1 Deer Park Dr, Suite Q, Monmouth Junction, NJ 08852, USA