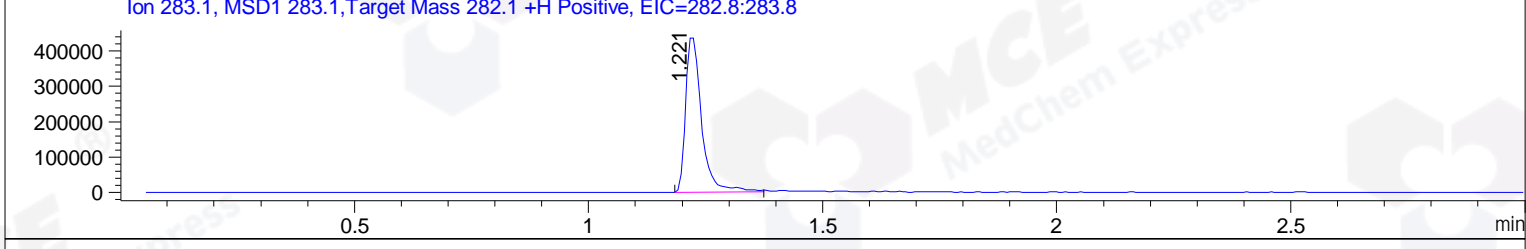
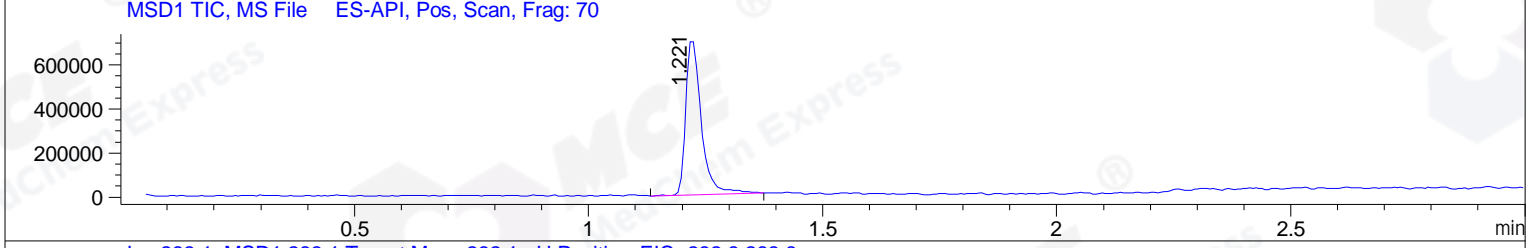
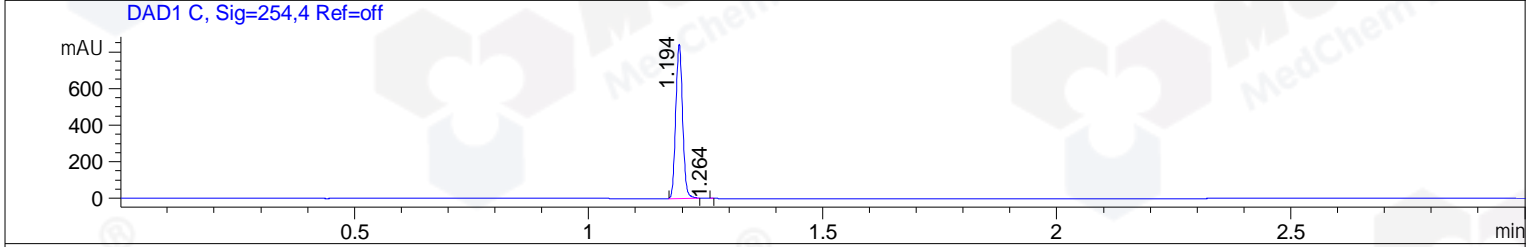
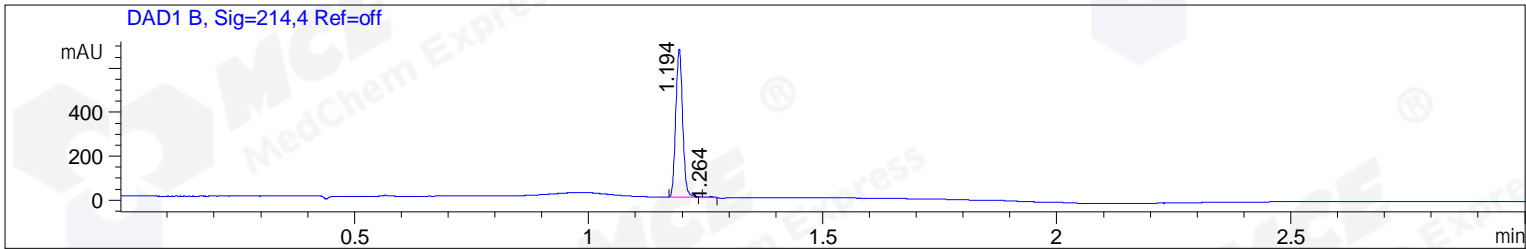


File ..1\DATA\2018\20181129\515\BIZ2018-N29-WYQ4.D Tgt Mass (CHM):  
 Injection Date : 29 Nov 18 3:41 pm +0800 Seq. Line : 26  
 Sample Name : BIZ2018-N29-WYQ4 Location : P1-F-06  
 Acq. Operator : LQ\_1052 Inj : 1  
 Spec. Reported : MS Integration Inj Volume : 1 ul  
 Acq. Method : D:\Chem32\1\data\2018\20181129\515\1-POS-3MIN-1.M  
 Analysis Method : D:\CHEM32\1\DATA\2018\20181129\515\1-POS-3MIN-1.M  
 Catalog No : HY-B1413 Batch#34715  
 Method Info : Mobile Phase: A: water(0.01%TFA) B:ACN(0.01%TFA)  
 Gradient: 5% to 95%B within 1.3 min  
 Flow Rate :1.8ml/min  
 Column :SunFire C18, 4.6\*50mm,3.5um A-RP-314  
 Oven Temperature : 45



Integration Results for DAD1 B, Sig=214,4 Ref=off

RetTim	Width	Area	Height	Area%	MS (+)
1.19	0.02	683.25	673.26	99.63	283
1.26	0.01	2.52	2.81	0.37	283

Integration Results for DAD1 C, Sig=254,4 Ref=off

RetTim	Width	Area	Height	Area%	MS (+)
1.19	0.02	858.32	842.84	100.00	283
1.26	0.01	0.04	0.12	0.00	283

Integration Results for MSD1 TIC, MS File

RetTim	Width	Area	Height	Area%	MS (+)
1.22	0.03	1627624.38	717420.44	100.00	283

Ret. Time: 1.22

<<<< POSITIVE SPECTRA >>>>

ES-API Positive

