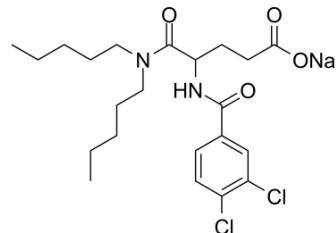


Lorglumide sodium salt

Cat. No.:	HY-B1439B		
CAS No.:	1021868-76-7		
Molecular Formula:	C ₂₂ H ₃₁ Cl ₂ N ₂ NaO ₄		
Molecular Weight:	481.39		
Target:	Cholecystokinin Receptor		
Pathway:	GPCR/G Protein; Neuronal Signaling		
Storage:	Powder	-20°C	3 years
	In solvent	-80°C	6 months
		-20°C	1 month



SOLVENT & SOLUBILITY

In Vitro

H₂O : ≥ 100 mg/mL (207.73 mM)
 DMSO : 100 mg/mL (207.73 mM; Need ultrasonic)
 * "≥" means soluble, but saturation unknown.

Preparing Stock Solutions	Solvent Concentration	Mass		
		1 mg	5 mg	10 mg
	1 mM	2.0773 mL	10.3866 mL	20.7732 mL
	5 mM	0.4155 mL	2.0773 mL	4.1546 mL
	10 mM	0.2077 mL	1.0387 mL	2.0773 mL

Please refer to the solubility information to select the appropriate solvent.

In Vivo

1. Add each solvent one by one: 10% DMSO >> 90% corn oil
 Solubility: ≥ 2.5 mg/mL (5.19 mM); Clear solution

BIOLOGICAL ACTIVITY

Description	Lorglumide sodium salt (CR-1409 sodium salt) is a potent cholecystokinin (CCK) receptor antagonist ^[1] .
IC ₅₀ & Target	CCK ^[1]

REFERENCES

[1]. Scarpignato C, et al. Effect of a new potent CCK antagonist, lorglumide, on caerulein- and bombesin-induced pancreatic secretion and growth in the rat. Br J Pharmacol. 1989 Mar;96(3):661-9.

Caution: Product has not been fully validated for medical applications. For research use only.

Tel: 609-228-6898

Fax: 609-228-5909

E-mail: tech@MedChemExpress.com

Address: 1 Deer Park Dr, Suite Q, Monmouth Junction, NJ 08852, USA