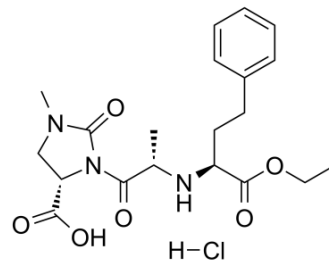


Imidapril hydrochloride

Cat. No.:	HY-B1451		
CAS No.:	89396-94-1		
Molecular Formula:	C ₂₀ H ₂₈ ClN ₃ O ₆		
Molecular Weight:	441.91		
Target:	Angiotensin-converting Enzyme (ACE)		
Pathway:	Metabolic Enzyme/Protease		
Storage:	Powder	-20°C	3 years
		4°C	2 years
	In solvent	-80°C	6 months
		-20°C	1 month



SOLVENT & SOLUBILITY

In Vitro

DMSO : 50 mg/mL (113.15 mM; Need ultrasonic)
 H₂O : 50 mg/mL (113.15 mM; Need ultrasonic)

Preparing Stock Solutions	Solvent Concentration	Mass		
		1 mg	5 mg	10 mg
	1 mM	2.2629 mL	11.3145 mL	22.6290 mL
	5 mM	0.4526 mL	2.2629 mL	4.5258 mL
	10 mM	0.2263 mL	1.1315 mL	2.2629 mL

Please refer to the solubility information to select the appropriate solvent.

In Vivo

- Add each solvent one by one: 10% DMSO >> 40% PEG300 >> 5% Tween-80 >> 45% saline
 Solubility: ≥ 2.5 mg/mL (5.66 mM); Clear solution
- Add each solvent one by one: 10% DMSO >> 90% (20% SBE-β-CD in saline)
 Solubility: ≥ 2.5 mg/mL (5.66 mM); Clear solution
- Add each solvent one by one: 10% DMSO >> 90% corn oil
 Solubility: ≥ 2.5 mg/mL (5.66 mM); Clear solution

BIOLOGICAL ACTIVITY

Description

Imidapril hydrochloride (TA-6366) is the hydrochloride salt of Imidapril, an angiotensin-converting enzyme (ACE) inhibitor with antihypertensive activity.

IC₅₀ & Target

ACE

In Vitro

As a prodrug, Imidapril is converted by hydrolysis in the liver into its active form imidaprilat. Imidaprilat competitively binds to and inhibits ACE, thereby blocking the conversion of angiotensin I to angiotensin II. This prevents the potent vasoconstrictive actions of angiotensin II and results in vasodilation. Imidaprilat also decreases angiotensin II-induced aldosterone secretion by the adrenal cortex, which leads to an increase in sodium excretion and subsequently increases water outflow.

Caution: Product has not been fully validated for medical applications. For research use only.

Tel: 609-228-6898

Fax: 609-228-5909

E-mail: tech@MedChemExpress.com

Address: 1 Deer Park Dr, Suite Q, Monmouth Junction, NJ 08852, USA