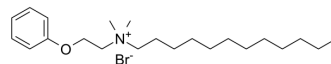


## Domiphen bromide

<b>Cat. No.:</b>	HY-B1467
<b>CAS No.:</b>	538-71-6
<b>Molecular Formula:</b>	C <sub>22</sub> H <sub>40</sub> BrNO
<b>Molecular Weight:</b>	414.46
<b>Target:</b>	Potassium Channel
<b>Pathway:</b>	Membrane Transporter/Ion Channel
<b>Storage:</b>	4°C, sealed storage, away from moisture * In solvent : -80°C, 6 months; -20°C, 1 month (sealed storage, away from moisture)



### SOLVENT & SOLUBILITY

#### In Vitro

DMSO : 100 mg/mL (241.28 mM; Need ultrasonic)  
H<sub>2</sub>O : 100 mg/mL (241.28 mM; Need ultrasonic)

Preparing Stock Solutions	Solvent Concentration	Mass		
		1 mg	5 mg	10 mg
	1 mM	2.4128 mL	12.0639 mL	24.1278 mL
	5 mM	0.4826 mL	2.4128 mL	4.8256 mL
	10 mM	0.2413 mL	1.2064 mL	2.4128 mL

Please refer to the solubility information to select the appropriate solvent.

#### In Vivo

- Add each solvent one by one: 10% DMSO >> 40% PEG300 >> 5% Tween-80 >> 45% saline  
Solubility: ≥ 2.5 mg/mL (6.03 mM); Clear solution
- Add each solvent one by one: 10% DMSO >> 90% (20% SBE-β-CD in saline)  
Solubility: 2.5 mg/mL (6.03 mM); Suspended solution; Need ultrasonic
- Add each solvent one by one: 10% DMSO >> 90% corn oil  
Solubility: ≥ 2.5 mg/mL (6.03 mM); Clear solution

### BIOLOGICAL ACTIVITY

#### Description

Domiphen bromide is a chemical antiseptic and a quaternary ammonium compound, used as a cationic surfactant.

---

**Caution: Product has not been fully validated for medical applications. For research use only.**

Tel: 609-228-6898

Fax: 609-228-5909

E-mail: [tech@MedChemExpress.com](mailto:tech@MedChemExpress.com)

Address: 1 Deer Park Dr, Suite Q, Monmouth Junction, NJ 08852, USA