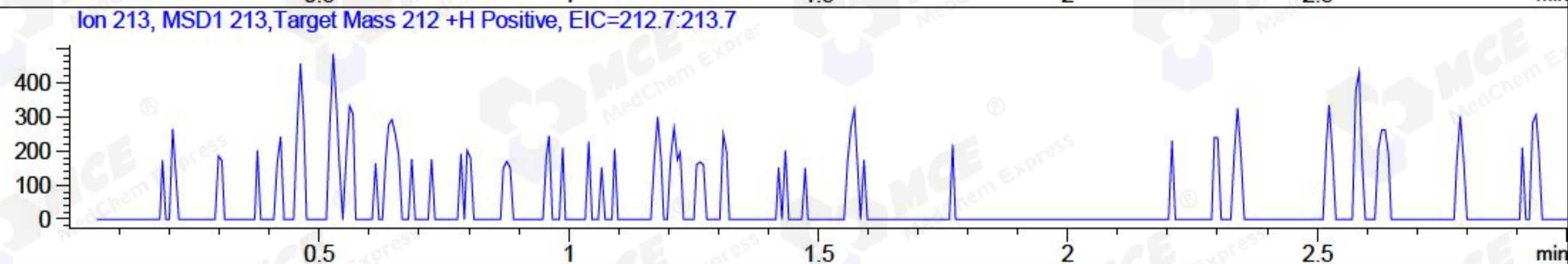
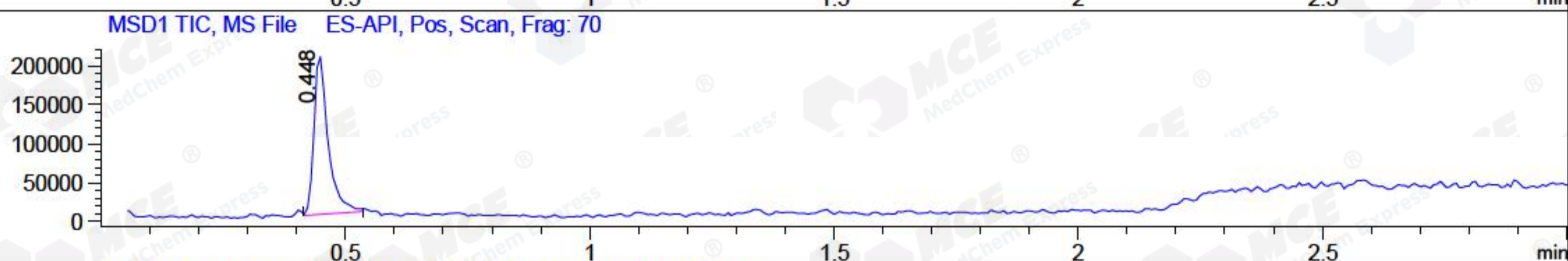
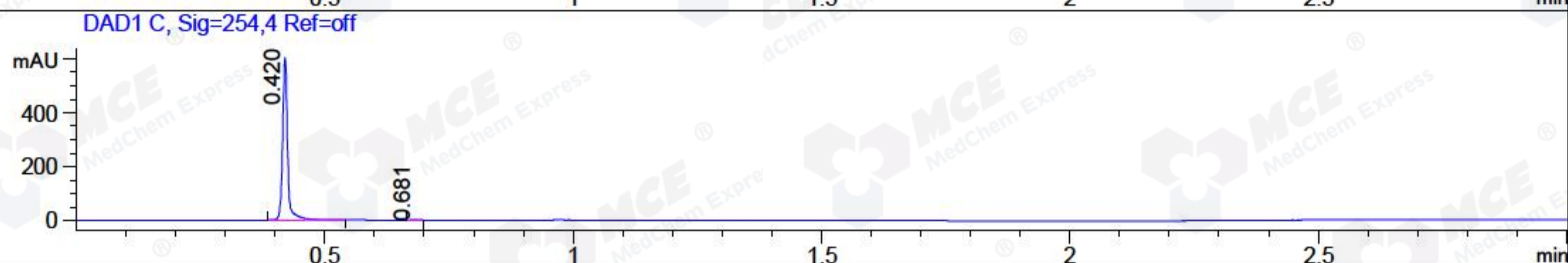
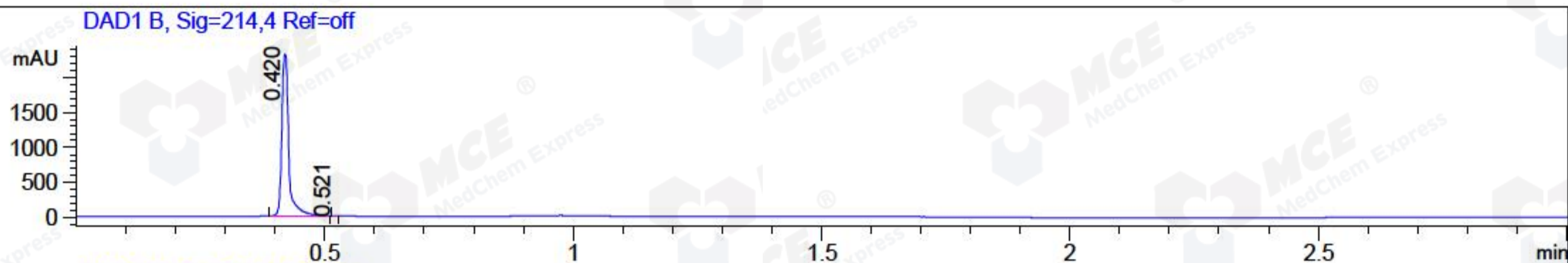


File ..DATA\2018\20181030\470\BIZ2018-030-WYQ13.D Tgt Mass (CHM):
 Injection Date : 30 Oct 18 3:46 pm +0800 Seq. Line : 78
 Sample Name : BIZ2018-030-WYQ13 Location : P2-D-04
 Acq. Operator : LQ_1052 Inj : 1
 Spec. Reported : MS Integration Inj Volume : 1 ul
 Acq. Method : D:\Chem32\1\data\2018\20181030\470\1-POS-3MIN-1.M
 Analysis Method : D:\CHEM32\1\DATA\2018\20181030\470\1-POS-3MIN-1.M
 Catalog No : HY-B1473 Batch#33826 A-RP-314
 Method Info : Mobile Phase: A: water(0.01%TFA) B:ACN(0.01%TFA)
 Gradient: 5% to 95%B within 1.3 min
 Flow Rate : 1.8ml/min
 Column :SunFire C18, 4.6*50mm,3.5um A-RP-314
 Oven Temperature : 45□



Integration Results for DAD1 B, Sig=214,4 Ref=off

RetTim	Width	Area	Height	Area%	MS (+)
0.42	0.02	2284.54	2326.01	99.97	177
0.52	0.01	0.66	1.39	0.03	177

Integration Results for DAD1 C, Sig=254,4 Ref=off

RetTim	Width	Area	Height	Area%	MS (+)
0.42	0.01	428.70	608.35	99.93	177
0.68	0.02	0.28	0.22	0.07	217

Integration Results for MSD1 TIC, MS File

RetTim	Width	Area	Height	Area%	MS (+)
0.45	0.03	411135.59	203704.27	100.00	177

Ret. Time: 0.45

<<<< POSITIVE SPECTRA >>>>

ES-API Positive

