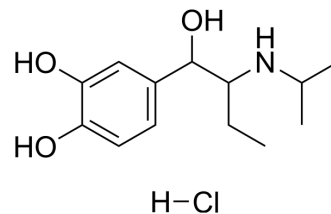


## Isoetharine hydrochloride

<b>Cat. No.:</b>	HY-B1481B
<b>CAS No.:</b>	50-96-4
<b>Molecular Formula:</b>	C <sub>13</sub> H <sub>22</sub> ClNO <sub>3</sub>
<b>Molecular Weight:</b>	275.77
<b>Target:</b>	Others
<b>Pathway:</b>	Others
<b>Storage:</b>	Please store the product under the recommended conditions in the Certificate of Analysis.



### BIOLOGICAL ACTIVITY

<b>Description</b>	Isoetharine hydrochloride is selective, short-acting and orally active $\beta$ -agonist which is widely used as a bronchodilator in the research of inhalation research <sup>[1]</sup> .								
<b>In Vivo</b>	<p>Isoetharine hydrochloride (Compound I) (oral; 0, 800, 1400, 2000 and 2500 mg/kg/day; 2 weeks) is high variable of plasma levels in dose-ranging studies at 1 h after oral medication<sup>[1]</sup>.</p> <p>MCE has not independently confirmed the accuracy of these methods. They are for reference only.</p> <table border="1" style="width: 100%; border-collapse: collapse;"> <tr> <td style="width: 30%;">Animal Model:</td> <td>Sprague-Dawley rats<sup>[1]</sup></td> </tr> <tr> <td>Dosage:</td> <td>0, 800, 1400, 2000 and 2500 mg/kg</td> </tr> <tr> <td>Administration:</td> <td>oral; 0, 800, 1400, 2000 and 2500 mg/kg/day; 2 weeks</td> </tr> <tr> <td>Result:</td> <td>Observed highly variable of plasma levels in dose-ranging studies at 1 h after oral medication.</td> </tr> </table>	Animal Model:	Sprague-Dawley rats <sup>[1]</sup>	Dosage:	0, 800, 1400, 2000 and 2500 mg/kg	Administration:	oral; 0, 800, 1400, 2000 and 2500 mg/kg/day; 2 weeks	Result:	Observed highly variable of plasma levels in dose-ranging studies at 1 h after oral medication.
Animal Model:	Sprague-Dawley rats <sup>[1]</sup>								
Dosage:	0, 800, 1400, 2000 and 2500 mg/kg								
Administration:	oral; 0, 800, 1400, 2000 and 2500 mg/kg/day; 2 weeks								
Result:	Observed highly variable of plasma levels in dose-ranging studies at 1 h after oral medication.								

### REFERENCES

[1]. G B Park, et al. Determination of isoetharine in plasma by reversed-phase chromatography with amperometric detection. J Pharm Sci. 1982 Aug;71(8):932-4.

**Caution: Product has not been fully validated for medical applications. For research use only.**

Tel: 609-228-6898

Fax: 609-228-5909

E-mail: tech@MedChemExpress.com

Address: 1 Deer Park Dr, Suite Q, Monmouth Junction, NJ 08852, USA