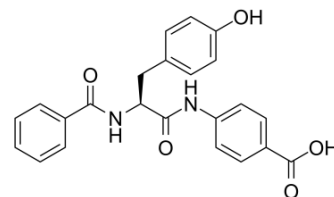


Bentiromide

Cat. No.:	HY-B1493		
CAS No.:	37106-97-1		
Molecular Formula:	C ₂₃ H ₂₀ N ₂ O ₅		
Molecular Weight:	404.42		
Target:	Others		
Pathway:	Others		
Storage:	Powder	-20°C	3 years
	In solvent	-80°C	6 months
		-20°C	1 month



SOLVENT & SOLUBILITY

In Vitro

DMSO : ≥ 250 mg/mL (618.17 mM)

* "≥" means soluble, but saturation unknown.

Preparing Stock Solutions	Solvent Concentration	Mass		
		1 mg	5 mg	10 mg
	1 mM	2.4727 mL	12.3634 mL	24.7268 mL
	5 mM	0.4945 mL	2.4727 mL	4.9454 mL
	10 mM	0.2473 mL	1.2363 mL	2.4727 mL

Please refer to the solubility information to select the appropriate solvent.

BIOLOGICAL ACTIVITY

Description

Bentiromide is a peptide that is broken down in the pancreas by chymotrypsin. The bentiromide test is an excellent means of confirming the diagnosis of pancreatic exocrine insufficiency by outpatient test of chymotrypsin function^[1].

REFERENCES

[1]. Toskes PP, et al. The bentiromide test for pancreatic exocrine insufficiency. *Pharmacotherapy*. 1984 Mar-Apr;4(2):74-80.

Caution: Product has not been fully validated for medical applications. For research use only.

Tel: 609-228-6898

Fax: 609-228-5909

E-mail: tech@MedChemExpress.com

Address: 1 Deer Park Dr, Suite Q, Monmouth Junction, NJ 08852, USA