

File ..DATA\2019\20190808\681\BIZ2019-807-CXL12.D Tgt Mass (CHM):

Injection Date : 8 Aug 19 12:19 pm +0800 Seq. Line : 39

Sample Name : BIZ2019-807-CXL12 Location : P1-B-02

Acq. Operator : ZJ_1432 Inj : 1

Spec. Reported : MS Integration Inj Volume : 0.4 ul

Acq. Method : D:\Chem32\1\data\2019\20190808\681\1-POS-3MIN.M

Analysis Method : D:\CHEM32\1\DATA\2019\20190808\681\1-POS-3MIN.M

Catalog No : HY-B1493 Batch#44232

Method Info : Mobile Phase: A: water(0.01%TFA) B:ACN(0.01%TFA)

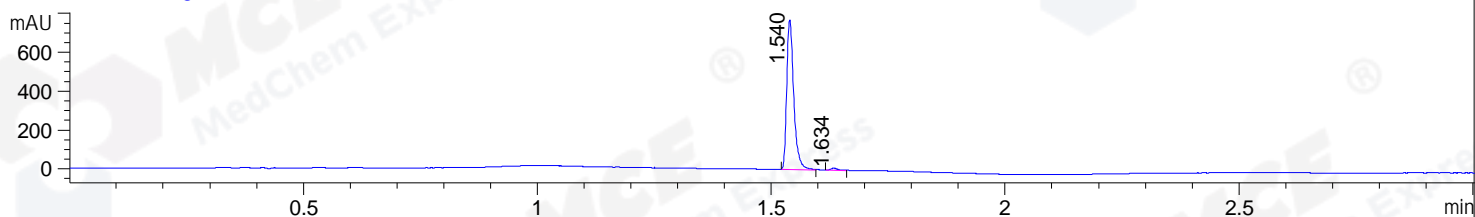
Gradient: 5% to 95%B within 1.3 min

Flow Rate :1.8ml/min

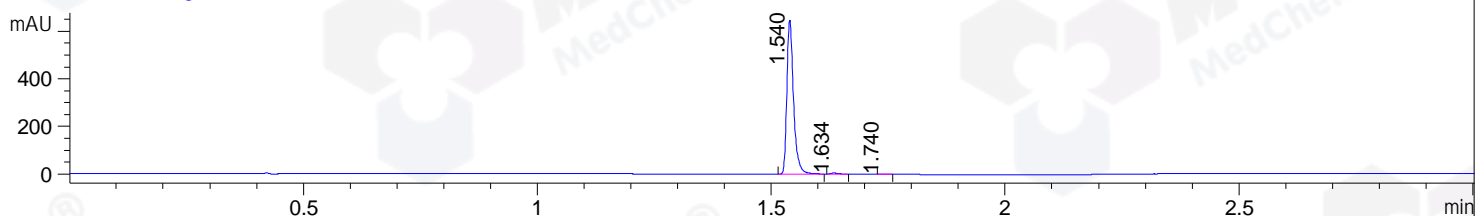
Column :SunFire C18, 4.6*50mm,3.5um A-RP-433

Oven Temperature : 45

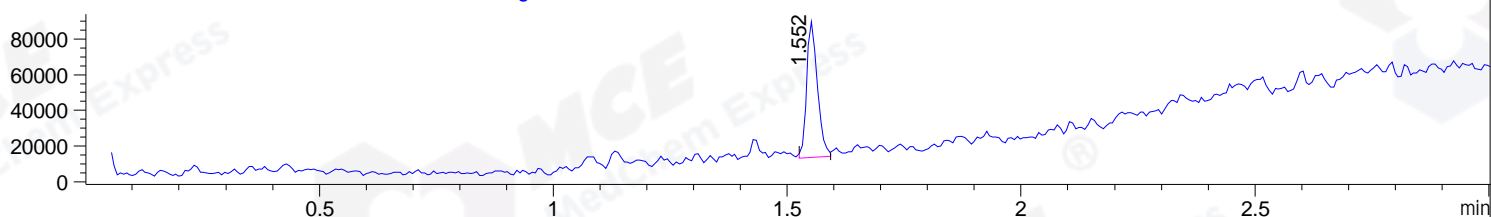
DAD1 B, Sig=214,4 Ref=off



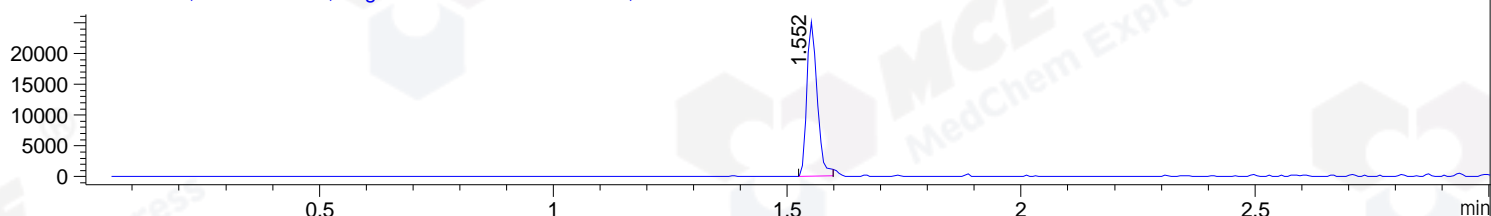
DAD1 C, Sig=254,4 Ref=off



MSD1 TIC, MS File ES-API, Pos, Scan, Frag: 70



Ion 405.14, MSD1 405.14, Target Mass 404.14 +H Positive, EIC=404.84:405.84



Integration Results for DAD1 B, Sig=214,4 Ref=off

RetTim	Width	Area	Height	Area%	MS (+)
1.54	0.02	803.41	770.71	98.69	405
1.63	0.02	10.66	9.92	1.31	159

Integration Results for DAD1 C, Sig=254,4 Ref=off

RetTim	Width	Area	Height	Area%	MS (+)
1.54	0.02	639.31	648.26	99.21	405
1.63	0.02	4.16	3.98	0.65	159
1.74	0.01	0.93	1.05	0.14	159

Integration Results for MSD1 TIC, MS File

RetTim	Width	Area	Height	Area%	MS (+)
1.55	0.02	121245.58	76000.23	100.00	405

Ret. Time: 1.55

<<<< POSITIVE SPECTRA >>>>

ES-API Positive

