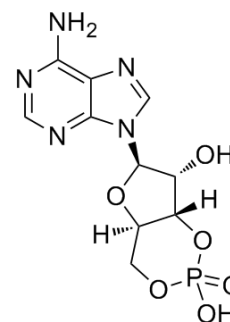


## cAMP

Cat. No.:	HY-B1511		
CAS No.:	60-92-4		
Molecular Formula:	C <sub>10</sub> H <sub>12</sub> N <sub>5</sub> O <sub>6</sub> P		
Molecular Weight:	329.21		
Target:	Endogenous Metabolite		
Pathway:	Metabolic Enzyme/Protease		
Storage:	Powder	-20°C	3 years
	In solvent	-80°C	6 months
		-20°C	1 month



### SOLVENT & SOLUBILITY

#### In Vitro

H<sub>2</sub>O : ≥ 5 mg/mL (15.19 mM)  
 DMSO : < 1 mg/mL (insoluble or slightly soluble)  
 \* "≥" means soluble, but saturation unknown.

Preparing Stock Solutions	Solvent	Mass	1 mg	5 mg	10 mg
	Concentration				
	1 mM		3.0376 mL	15.1879 mL	30.3757 mL
	5 mM		0.6075 mL	3.0376 mL	6.0751 mL
	10 mM		0.3038 mL	1.5188 mL	3.0376 mL

Please refer to the solubility information to select the appropriate solvent.

### BIOLOGICAL ACTIVITY

Description	cAMP is a mitogenic messenger and promotes the G <sub>1</sub> to S phase transition in the cell cycle.
IC <sub>50</sub> & Target	Human Endogenous Metabolite

### REFERENCES

[1]. Cook SJ, et al. Inhibition by cAMP of Ras-dependent activation of Raf. Science. 1993 Nov 12;262(5136):1069-72.

---

**Caution: Product has not been fully validated for medical applications. For research use only.**

Tel: 609-228-6898

Fax: 609-228-5909

E-mail: [tech@MedChemExpress.com](mailto:tech@MedChemExpress.com)

Address: 1 Deer Park Dr, Suite Q, Monmouth Junction, NJ 08852, USA