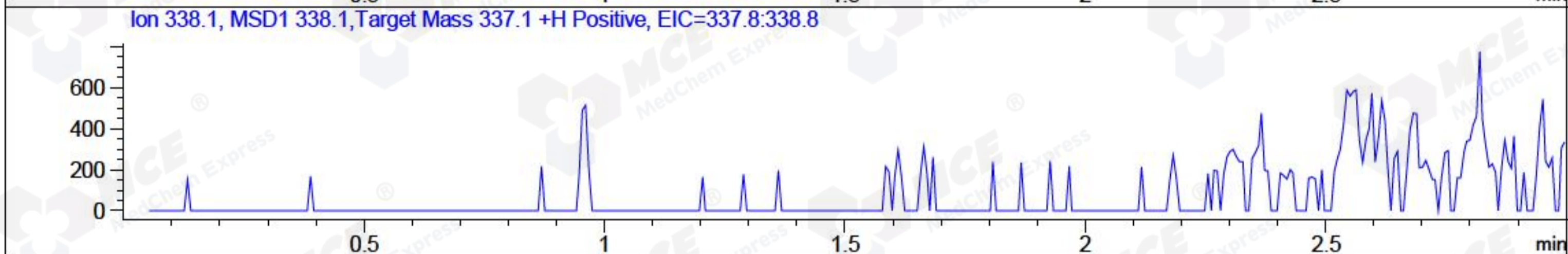
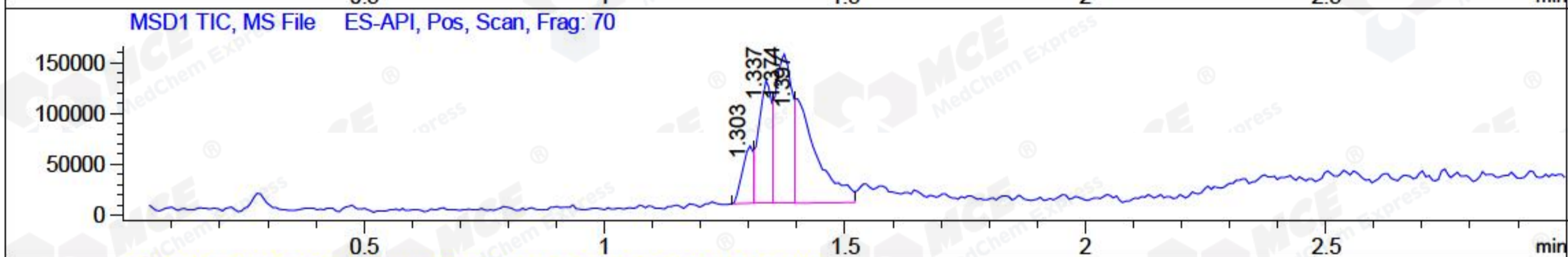
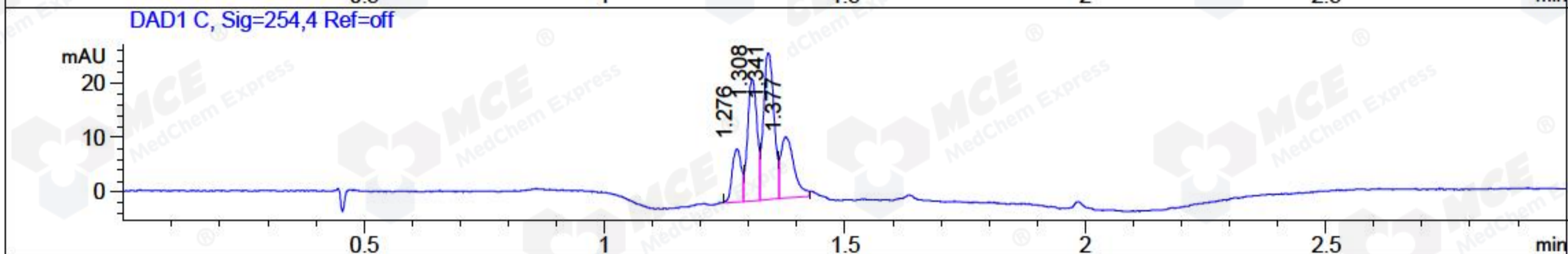
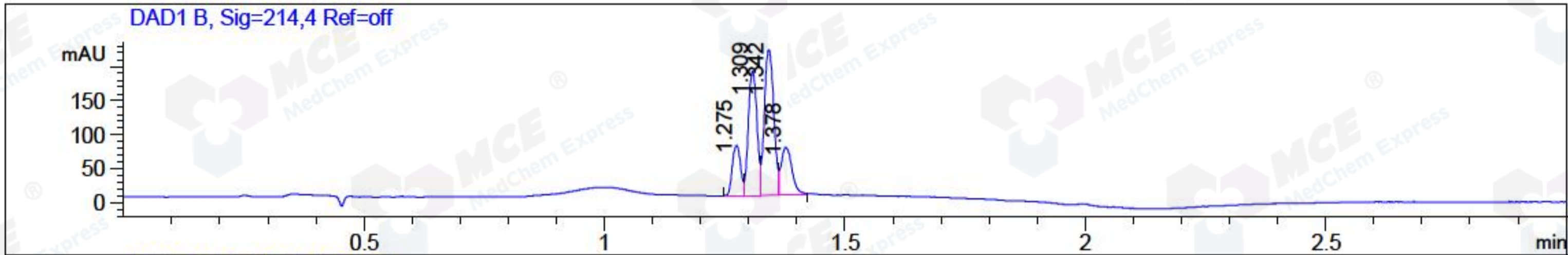


File ..1\DATA\2018\20181116\495\BIZ2018-N16-WYQ6.D Tgt Mass (CHM):
 Injection Date : 16 Nov 18 1:31 pm +0800 Seq. Line : 42
 Sample Name : BIZ2018-N16-WYQ6 Location : P1-A-07
 Acq. Operator : LQ_1052 Inj : 1
 Spec. Reported : MS Integration Inj Volume : 1 ul
 Acq. Method : D:\Chem32\1\data\2018\20181116\495\1-POS-3MIN-1.M
 Analysis Method : D:\CHEM32\1\DATA\2018\20181116\495\1-POS-3MIN-1.M
 Catalog No : HY-B1539A Batch#34580 A-RP-314
 Method Info : Mobile Phase: A: water(0.01%TFA) B:ACN(0.01%TFA)
 Gradient: 5% to 95%B within 1.3 min
 Flow Rate : 1.8ml/min
 Column :SunFire C18, 4.6*50mm,3.5um A-RP-314
 Oven Temperature : 45□



Integration Results for DAD1 B, Sig=214,4 Ref=off

RetTim	Width	Area	Height	Area%	MS (+)
1.28	0.02	87.51	73.18	12.19	288
1.31	0.02	230.08	181.93	32.04	288
1.34	0.02	292.28	213.17	40.70	302
1.38	0.02	108.25	69.59	15.07	316

Integration Results for DAD1 C, Sig=254,4 Ref=off

RetTim	Width	Area	Height	Area%	MS (+)
1.28	0.02	12.67	9.67	11.91	288
1.31	0.02	30.76	22.25	28.91	288
1.34	0.02	41.19	26.92	38.72	302
1.38	0.03	21.77	11.17	20.46	316

Integration Results for MSD1 TIC, MS File

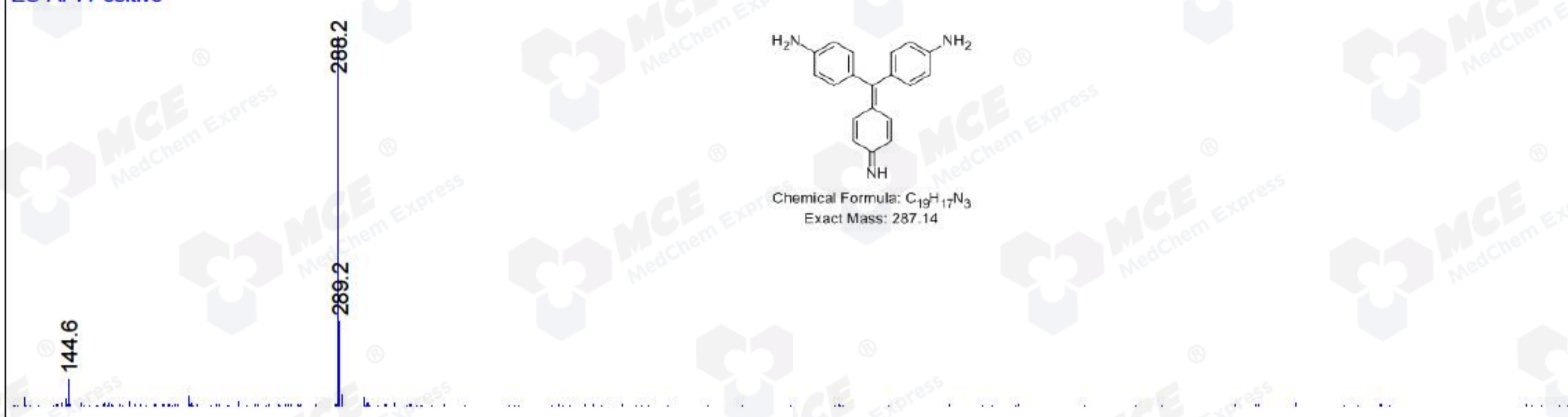
RetTim	Width	Area	Height	Area%	MS (+)
1.30	0.03	97523.80	56735.20	9.98	288

1.34	0.03	227206.13	122354.24	23.26	302
1.37	0.04	346836.25	147818.75	35.51	316
1.40	0.05	305240.53	105508.69	31.25	330

Ret. Time: 1.30

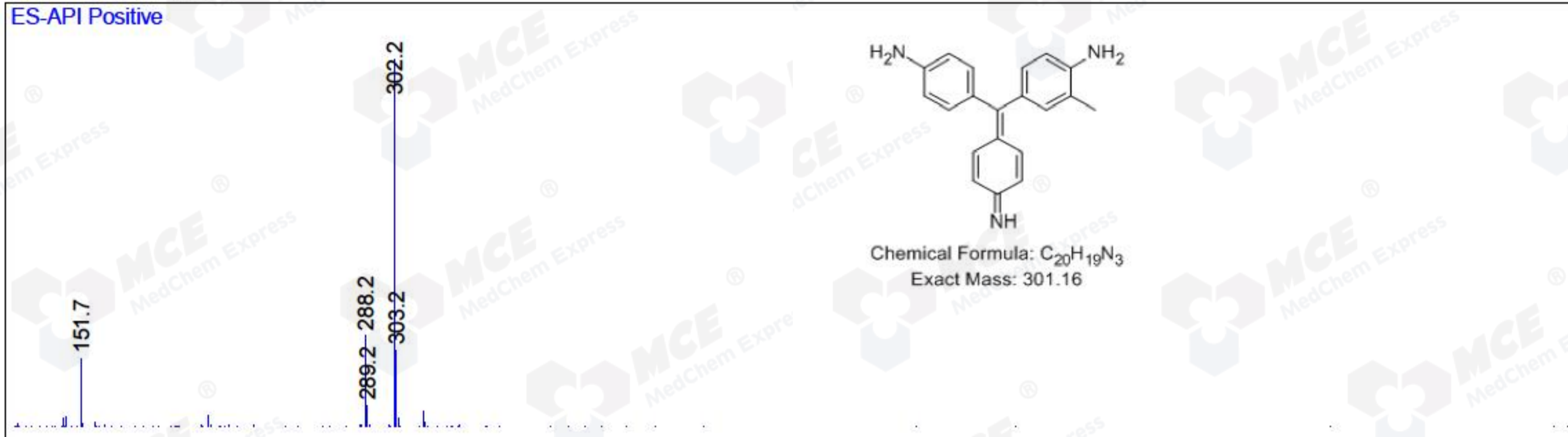
<<<< POSITIVE SPECTRA >>>>

ES-API Positive



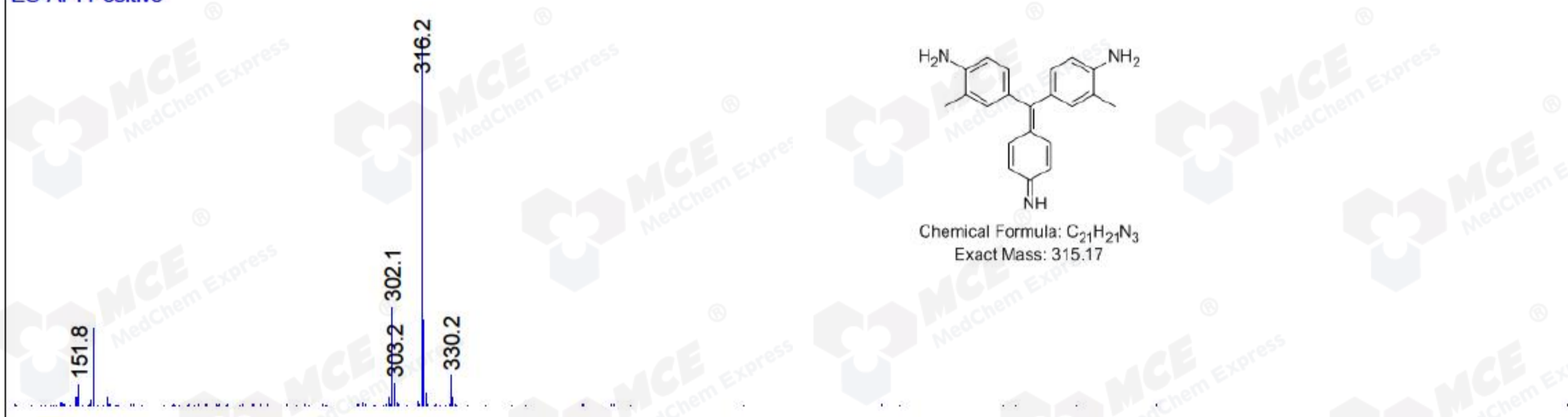
Ret. Time: 1.34

ES-API Positive



Ret. Time: 1.37

ES-API Positive



Ret. Time: 1.40

ES-API Positive

