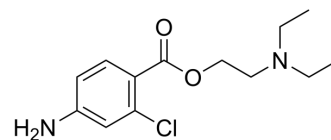


Chlorprocaine

Cat. No.:	HY-B1604A
CAS No.:	133-16-4
Molecular Formula:	C ₁₃ H ₁₉ ClN ₂ O ₂
Molecular Weight:	270.76
Target:	Na ⁺ /K ⁺ ATPase
Pathway:	Membrane Transporter/Ion Channel
Storage:	Please store the product under the recommended conditions in the Certificate of Analysis.



BIOLOGICAL ACTIVITY

Description	Chlorprocaine (2-Chloroprocaine) is a potent inhibitor of Na,K-ATPase activity with an IC ₅₀ of 13 mM. Chlorprocaine blocks peripheral nerve ^[1] .
IC ₅₀ & Target	IC ₅₀ : 13 mM (Na,K-ATPase) ^[1]
In Vivo	In mice, the intravenous LD ₅₀ of Chlorprocaine HCl is 97 mg/kg and the subcutaneous LD ₅₀ of Chlorprocaine HCl is 950 mg/kg ^[2] . MCE has not independently confirmed the accuracy of these methods. They are for reference only.

REFERENCES

- [1]. H Kutchai, et al. Inhibition of the Na,K-ATPase of Canine Renal Medulla by Several Local Anesthetics. Pharmacol Res. 2001 Apr;43(4):399-403.
- [2]. Chlorprocaine HCl Injection.

Caution: Product has not been fully validated for medical applications. For research use only.

Tel: 609-228-6898

Fax: 609-228-5909

E-mail: tech@MedChemExpress.com

Address: 1 Deer Park Dr, Suite Q, Monmouth Junction, NJ 08852, USA