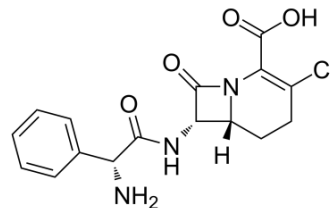


Loracarbef

Cat. No.:	HY-B1682
CAS No.:	76470-66-1
Molecular Formula:	C ₁₆ H ₁₆ ClN ₃ O ₄
Molecular Weight:	349.77
Target:	Antibiotic; Bacterial
Pathway:	Anti-infection
Storage:	Please store the product under the recommended conditions in the Certificate of Analysis.



BIOLOGICAL ACTIVITY

Description	Loracarbef, a cephalosporin antibiotic, is an orally active second-generation synthetic beta-lactam antibiotic of the carbacephem class ^{[1][2]} .
In Vitro	Loracarbef demonstrates excellent activity against isolates of Escherichia coli and Klebsiella, Proteus and Salmonella species ^[2] . MCE has not independently confirmed the accuracy of these methods. They are for reference only.

REFERENCES

- [1]. M Hu, et al. Mechanisms of Transport of Quinapril in Caco-2 Cell Monolayers: Comparison With Cephalexin. *Pharm Res.* 1995 Aug;12(8):1120-5.
- [2]. J W Dyke, et al. Antimicrobial Activity of New Antibiotics Against Bacterial Isolates From a Community Hospital. *Chemotherapy.* Sep-Oct 1993;39(5):315-21.

Caution: Product has not been fully validated for medical applications. For research use only.

Tel: 609-228-6898

Fax: 609-228-5909

E-mail: tech@MedChemExpress.com

Address: 1 Deer Park Dr, Suite Q, Monmouth Junction, NJ 08852, USA