

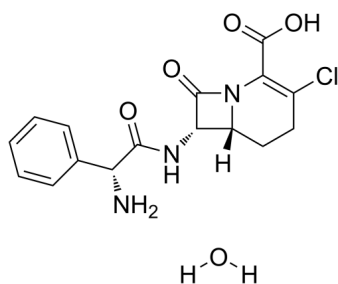
Loracarbef (hydrate)

Cat. No.: HY-B1682A
Batch No.: 438599
CAS No.: 121961-22-6
Molecular Formula: C₁₆H₁₈ClN₃O₅

ANALYTICAL DATA

Theoretical: C(52.25%), H(4.93%), N(11.43%)
Result: C(51.86%), H(4.90%), N(11.34%)

Chemical Structure:



Caution: Product has not been fully validated for medical applications. For research use only.

Tel: 609-228-6898

Fax: 609-228-5909

E-mail: tech@MedChemExpress.com

Address: 1 Deer Park Dr, Suite Q, Monmouth Junction, NJ 08852, USA