

File ..\DATA\2020\20200604\985\BIZ2020-603-WMX1-.D Tgt Mass (CHM):

Injection Date : 4 Jun 20 4:30 pm +0800 Seq. Line : 86

Sample Name : BIZ2020-603-WMX1 Location : P1-A-03

Acq. Operator : ZJ_1432 Inj : 1

Spec. Reported : MS Integration Inj Volume : 0.4 ul

Acq. Method : D:\Chem32\1\data\2020\20200604\985\1-POS-3MIN-1(110-1500).M

Analysis Method : D:\CHEM32\1\DATA\2020\20200604\985\1-POS-3MIN-1(110-1500).M

Catalog No : HY-B1700A

Method Info : Mobile Phase: A: water(0.01%TFA) B:ACN(0.01%TFA)

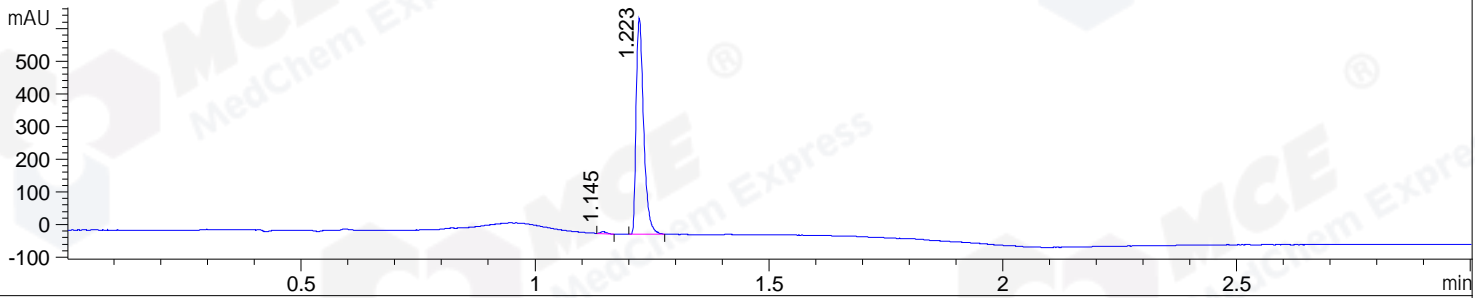
Gradient: 5% to 95%B within 1.3 min

Flow Rate :1.8ml/min

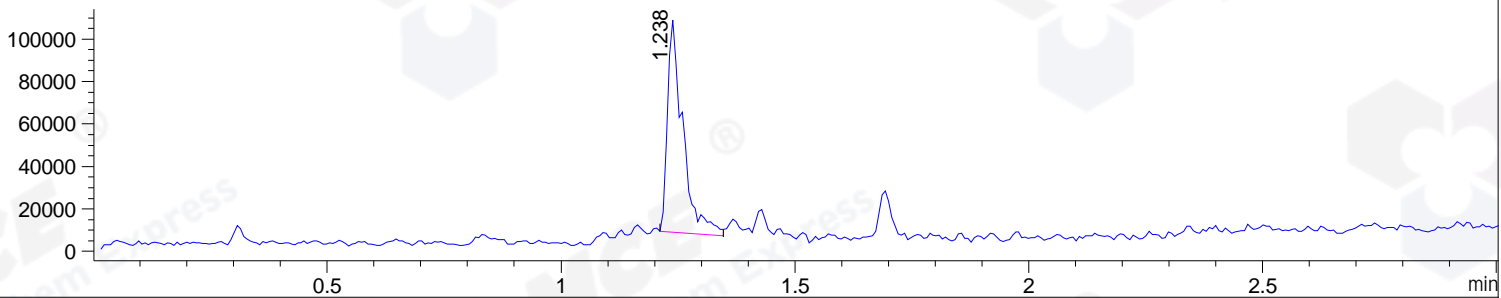
Column :SunFire C18, 4.6*50mm,3.5um A-RP-314

Oven Temperature : 45C

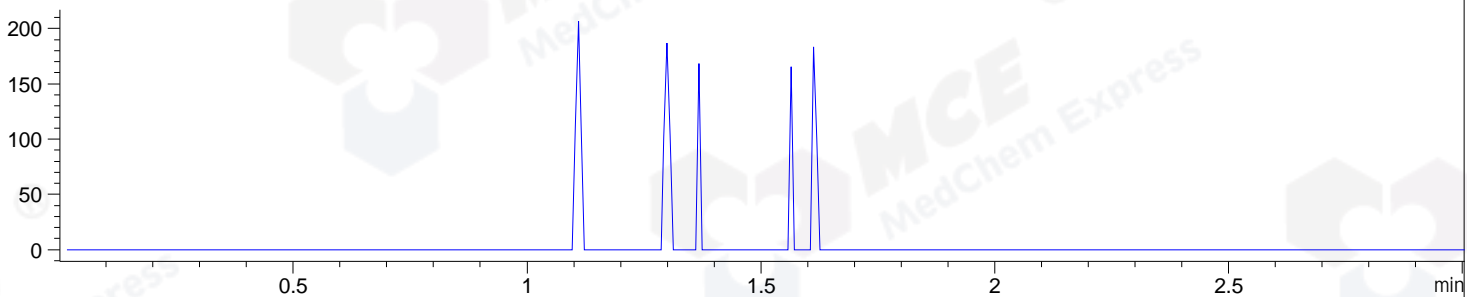
DAD1 B, Sig=214,4 Ref=off



MSD1 TIC, MS File ES-API, Pos, Scan, Frag: 70



Ion 1099, MSD1 1099, Target Mass 1098 +H Positive, EIC=1098.7:1099.7



Integration Results for DAD1 B, Sig=214,4 Ref=off

RetTim	Width	Area	Height	Area%	MS (+)
1.15	0.01	4.80	6.21	0.65	446
1.22	0.02	736.43	660.66	99.35	514

Integration Results for MSD1 TIC, MS File

RetTim	Width	Area	Height	Area%	MS (+)
1.24	0.03	228201.50	99794.63	100.00	514

Ret. Time: 1.24

<<<< POSITIVE SPECTRA >>>>

ES-API Positive

