

File ..ATA\2019\20190718\636\CPK2019-717-20770--.D Tgt Mass (CHM):

Injection Date : 18 Jul 19 4:46 pm +0800 Seq. Line : 46

Sample Name : CPK2019-717-20770 Location : PL-E-04

Acq. Operator : ZJ\_1432 Inj : 1

Spec. Reported : MS Integration Inj Volume : 0.2 ul

Acq. Method : D:\Chem32\1\data\2019\20190718\636\1-POS-3MIN.M

Analysis Method : D:\CHEM32\1\DATA\2019\20190718\636\1-POS-3MIN.M

Catalog No : HY-B1714A Batch#20770

Method Info : Mobile Phase: A: water(0.01%TFA) B:ACN(0.01%TFA)

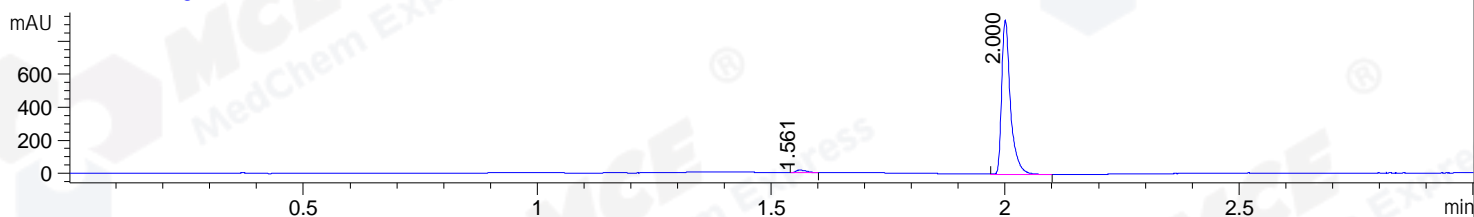
Gradient: 5% to 95%B within 1.3 min

Flow Rate :1.8ml/min

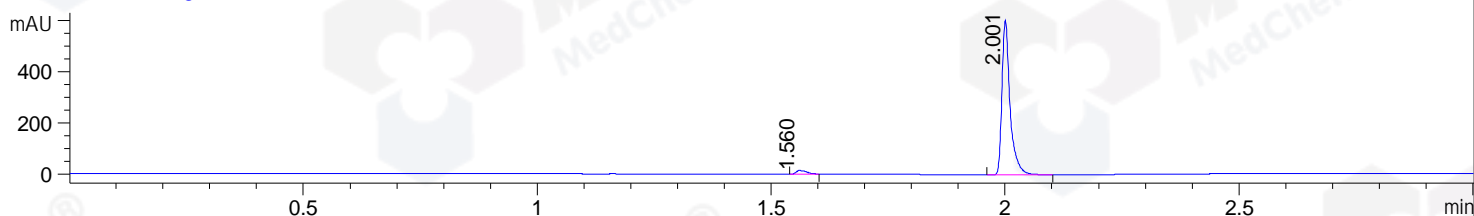
Column :SunFire C18, 4.6\*50mm,3.5um A-RP-433

Oven Temperature : 45

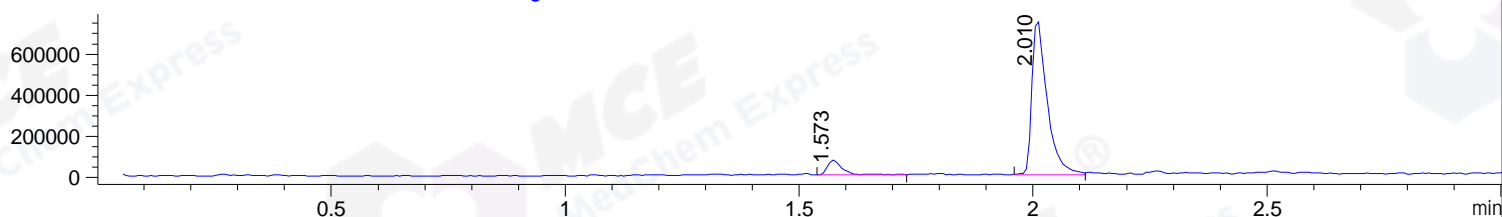
DAD1 B, Sig=214,4 Ref=off



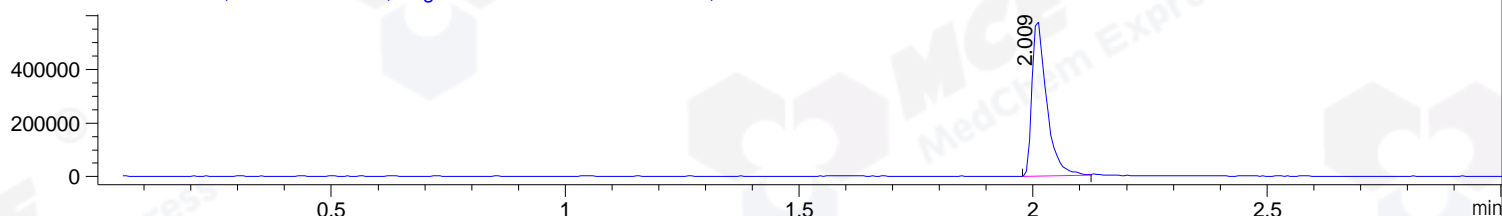
DAD1 C, Sig=254,4 Ref=off



MSD1 TIC, MS File ES-API, Pos, Scan, Frag: 70



Ion 249.2897, MSD1 249.2897, Target Mass 248.2897 +H Positive, EIC=248.99:249.99



## Integration Results for DAD1 B, Sig=214,4 Ref=off

| RetTim | Width | Area    | Height | Area% | MS (+) |
|--------|-------|---------|--------|-------|--------|
| 1.56   | 0.02  | 23.54   | 15.17  | 1.89  | 251    |
| 2.00   | 0.02  | 1222.08 | 934.56 | 98.11 | 249    |

## Integration Results for DAD1 C, Sig=254,4 Ref=off

| RetTim | Width | Area   | Height | Area% | MS (+) |
|--------|-------|--------|--------|-------|--------|
| 1.56   | 0.02  | 22.13  | 14.23  | 2.93  | 251    |
| 2.00   | 0.02  | 732.77 | 605.35 | 97.07 | 249    |

## Integration Results for MSD1 TIC, MS File

| RetTim | Width | Area       | Height    | Area% | MS (+) |
|--------|-------|------------|-----------|-------|--------|
| 1.57   | 0.04  | 169783.72  | 72165.48  | 9.15  | 251    |
| 2.01   | 0.03  | 1686227.38 | 756442.31 | 90.85 | 249    |

Ret. Time: 1.57

<<<< POSITIVE SPECTRA >>>>

ES-API Positive



Ret. Time: 2.01

ES-API Positive

