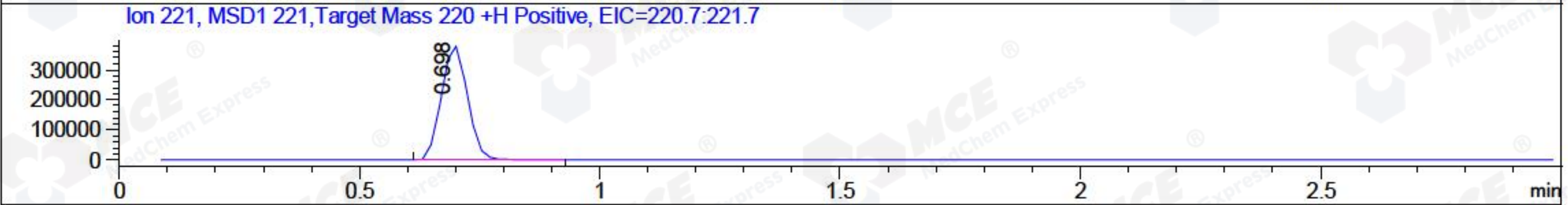
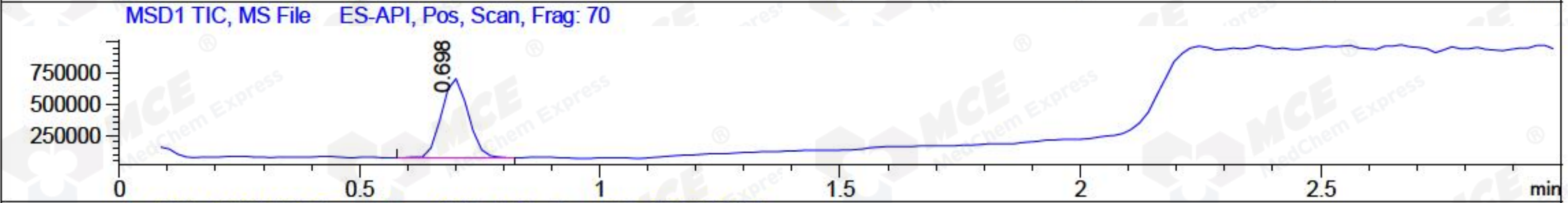
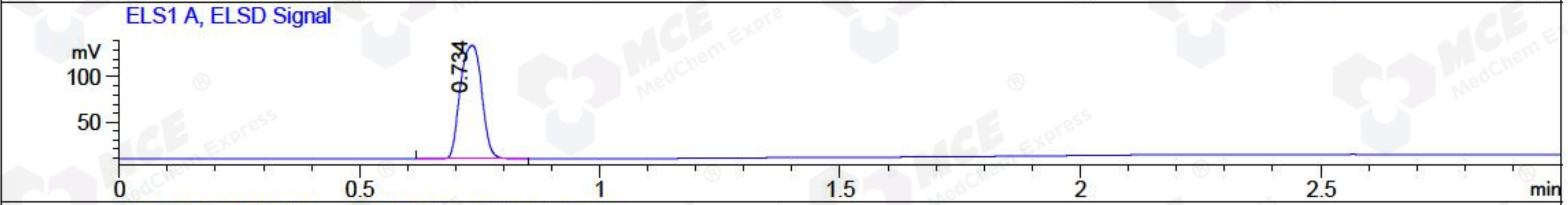
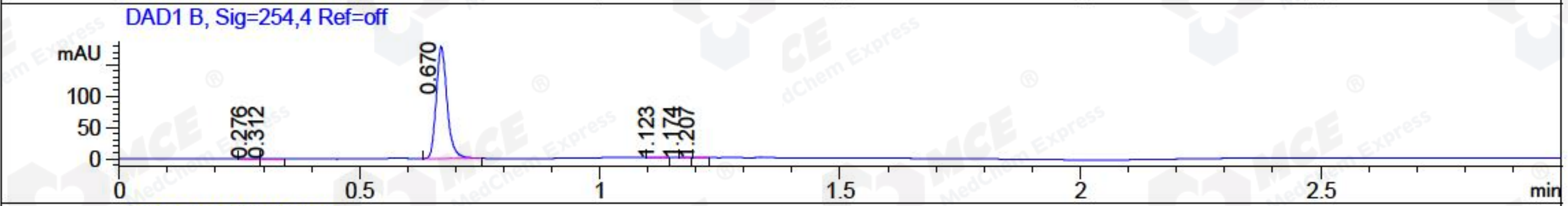
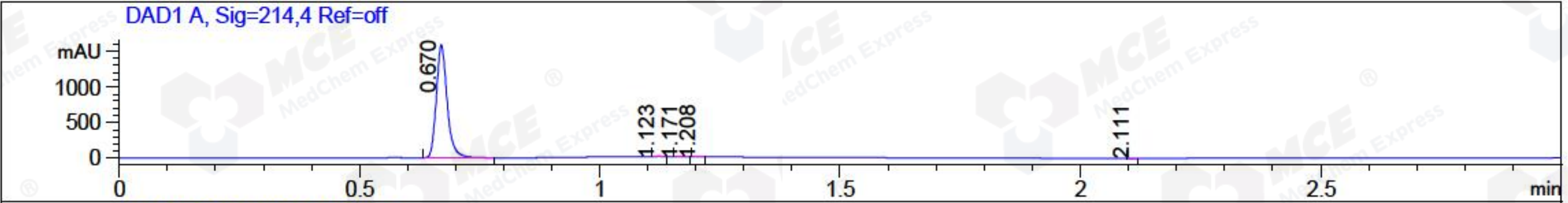


File ..a\20171103\20171103 1\BIZ2017-N03-WYQ15.D Tgt Mass (CHM) :  
 Injection Date : 3 Nov 17 4:19 pm +0800 Seq. Line : 70  
 Sample Name : BIZ2017-N03-WYQ15 Location : P1-C-09  
 Acq. Operator : SYSTEM Inj : 1  
 Spec. Reported : MS Integration Inj Volume : 1 ul  
 Acq. Method : D:\LCMS03\Data\20171103\20171103 1\1-POS-3MIN.M  
 Analysis Method : D:\LCMS03\Data\20171103\20171103 1\1-POS-3MIN.M  
 Catalog No : HY-B1716 Batch#27061  
 Method Info : Mobile Phase: A: water(0.01%TFA) B:ACN(0.01%TFA)  
 Gradient: 5% to 95%B within 1.3 min  
 Flow Rate : 1.8ml/min  
 Column :SunFire C18, 4.6\*50mm,3.5um A-RP-186  
 Oven Temperature : 45C



Integration Results for DAD1 A, Sig=214,4 Ref=off

RetTim	Width	Area	Height	Area%	MS (+)
0.67	0.03	2484.83	1583.78	99.75	221
1.12	0.02	3.48	3.66	0.14	102
1.17	0.03	1.39	0.90	0.06	102
1.21	0.01	0.95	1.13	0.04	102
2.11	0.01	0.28	0.36	0.01	102

Integration Results for DAD1 B, Sig=254,4 Ref=off

RetTim	Width	Area	Height	Area%	MS (+)
0.28	0.02	0.09	0.09	0.03	102
0.31	0.02	0.15	0.15	0.05	102
0.67	0.03	281.94	178.76	99.70	221
1.12	0.02	0.40	0.38	0.14	102
1.17	0.01	0.08	0.10	0.03	102
1.21	0.01	0.13	0.14	0.04	102

Integration Results for MSD1 TIC, MS File

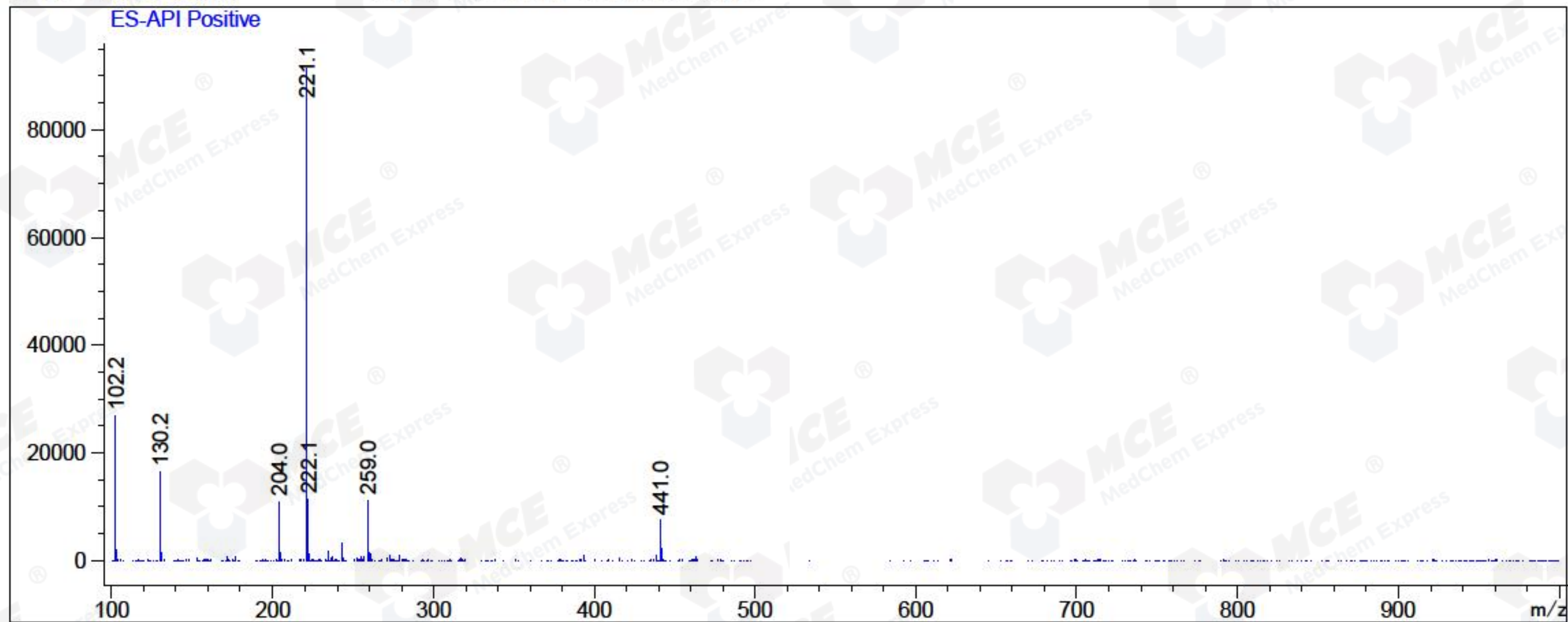


0.70      0.06      2439872.75      633357.94      100.00      221

RetTim	Width	Area	Height	Area%	MS (+)
--------	-------	------	--------	-------	--------

Ret. Time: 0.70

<<<< POSITIVE SPECTRA >>>>



\*\*\* End of Report \*\*\*