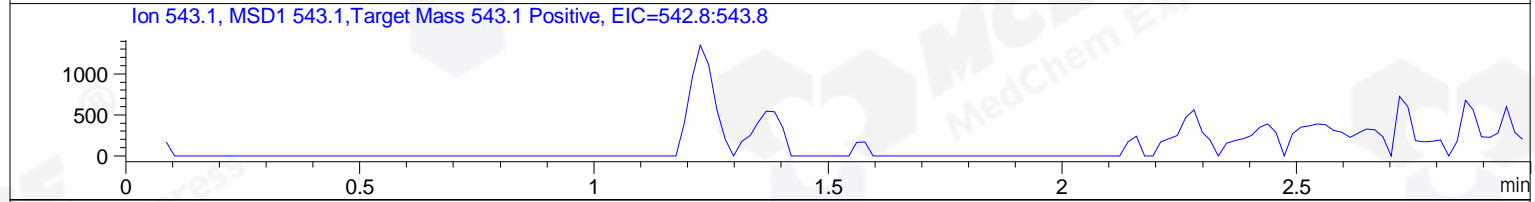
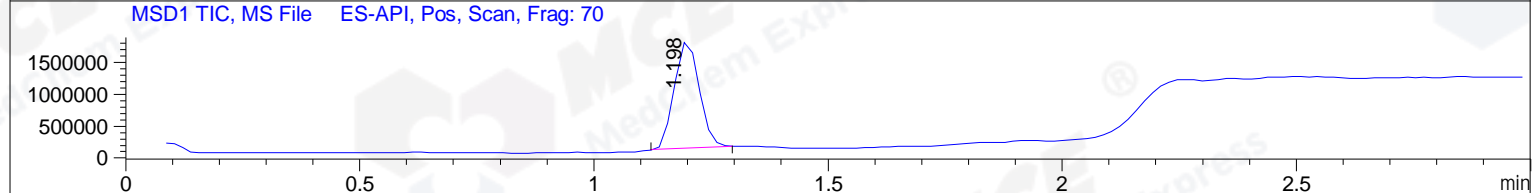
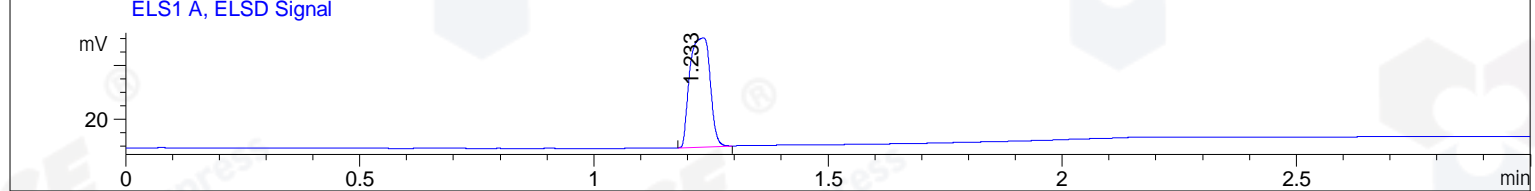
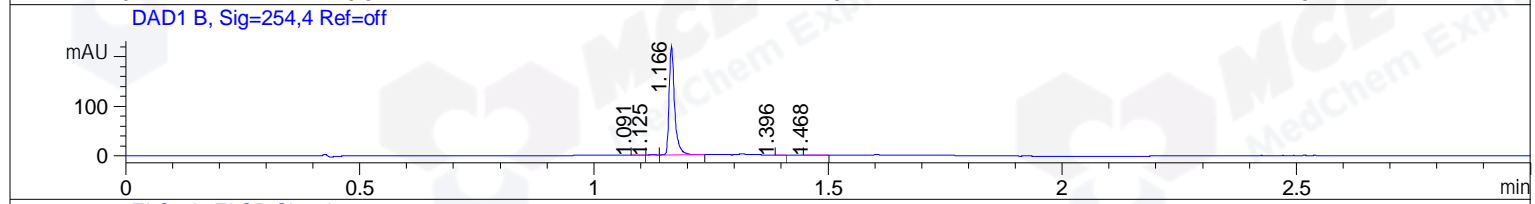
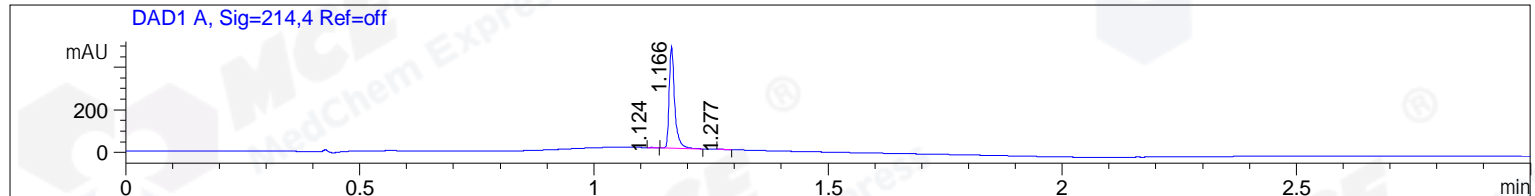


File ..3\Data\20170929\20170929\BIZ2017-929-WYQ8.D Tgt Mass (CHM):  
 Injection Date : 29 Sep 17 1:24 pm +0800 Seq. Line : 53  
 Sample Name : BIZ2017-929-WYQ8 Location : P1-C-03  
 Acq. Operator : SYSTEM Inj : 1  
 Spec. Reported : MS Integration Inj Volume : 1 ul  
 Acq. Method : D:\LCMS03\Data\20170929\20170929\1-POS-3MIN.M  
 Analysis Method : D:\LCMS03\Data\20170929\20170929\1-POS-3MIN.M  
 Catalog No : HY-B1743A Batch#26577  
 Method Info : Mobile Phase: A: water(0.01%TFA) B:ACN(0.01%TFA)  
 Gradient: 5% to 95%B within 1.3 min  
 Flow Rate :1.8ml/min  
 Column :SunFire C18, 4.6\*50mm,3.5um A-RP-186  
 Oven Temperature : 45C



Integration Results for DAD1 A, Sig=214,4 Ref=off

RetTim	Width	Area	Height	Area%	MS (+)
1.12	0.01	0.73	1.05	0.19	245
1.17	0.01	386.18	478.56	99.63	472
1.28	0.02	0.72	0.72	0.18	472

Integration Results for DAD1 B, Sig=254,4 Ref=off

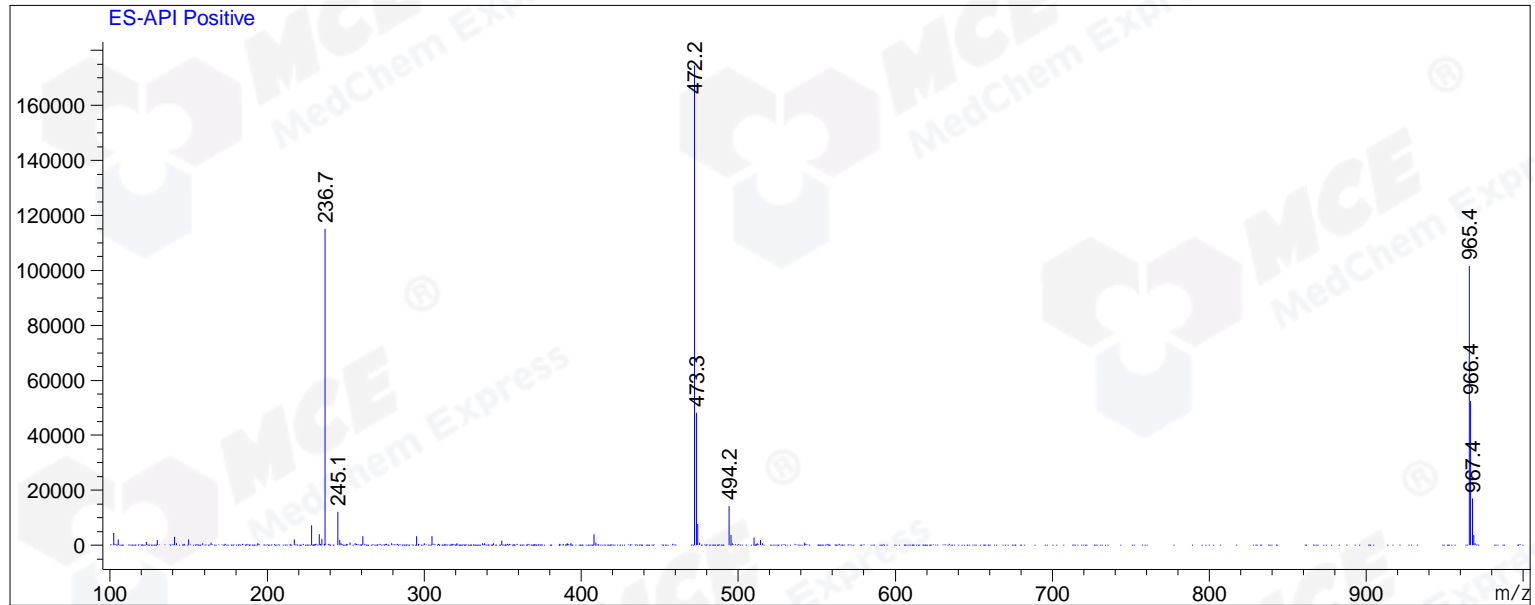
RetTim	Width	Area	Height	Area%	MS (+)
1.09	0.01	0.08	0.10	0.04	245
1.12	0.01	0.44	0.65	0.25	245
1.17	0.01	176.39	216.69	99.57	472
1.40	0.01	0.05	0.08	0.03	245
1.47	0.02	0.19	0.14	0.11	245

Integration Results for MSD1 TIC, MS File

RetTim	Width	Area	Height	Area%	MS (+)
1.20	0.06	6164460.00	1712512.50	100.00	472

Ret. Time: 1.20

<<<< POSITIVE SPECTRA >>>>



\*\*\* End of Report \*\*\*