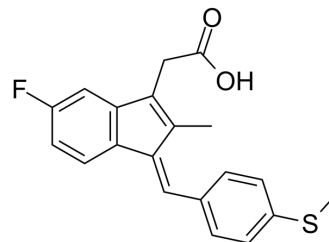


(E/Z)-Sulindac sulfide

| | |
|--------------------|--|
| Cat. No.: | HY-B1786A |
| CAS No.: | 32004-67-4 |
| Molecular Formula: | C ₂₀ H ₁₇ FO ₂ S |
| Molecular Weight: | 340.41 |
| Target: | γ-secretase; Amyloid-β |
| Pathway: | Neuronal Signaling; Stem Cell/Wnt |
| Storage: | 4°C, protect from light * In solvent : -80°C, 6 months; -20°C, 1 month (protect from light) |



BIOLOGICAL ACTIVITY

| | |
|---------------------------|--|
| Description | (E/Z)-Sulindac sulfide is a potent γ-secretase modulator (GSM). (E/Z)-Sulindac sulfide selectively reduces Aβ ₄₂ production in favor of shorter Aβ species. (E/Z)-Sulindac sulfide can be used for researching Alzheimer's disease ^[1] . |
| IC ₅₀ & Target | γ-secretase, Amyloid-β ^[1] |

REFERENCES

[1]. Richter L, et al. Amyloid beta 42 peptide (Abeta42)-lowering compounds directly bind to Abeta and interfere with amyloid precursor protein (APP) transmembrane dimerization. Proc Natl Acad Sci U S A. 2010 Aug 17;107(33):14597-602.

Caution: Product has not been fully validated for medical applications. For research use only.

Tel: 609-228-6898

Fax: 609-228-5909

E-mail: tech@MedChemExpress.com

Address: 1 Deer Park Dr, Suite Q, Monmouth Junction, NJ 08852, USA