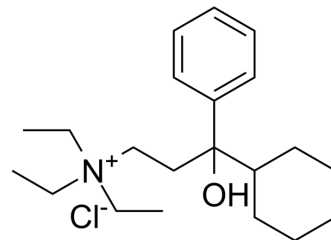


## Tridihexethyl chloride

Cat. No.:	HY-B1806A
CAS No.:	4310-35-4
Molecular Formula:	C <sub>21</sub> H <sub>36</sub> ClNO
Molecular Weight:	353.97
Target:	mAChR
Pathway:	GPCR/G Protein; Neuronal Signaling
Storage:	4°C, protect from light, stored under nitrogen * In solvent : -80°C, 6 months; -20°C, 1 month (protect from light, stored under nitrogen)



### BIOLOGICAL ACTIVITY

#### Description

Tridihexethyl (Pathilon) chloride is an orally active anticholinergic agent and mAChR antagonist, shows activities of antimuscarinic and anticholinergic. Tridihexethyl chloride shows pronounced antispasmodic and antisecretory effects on the gastrointestinal tract. Tridihexethyl chloride can be used in studies of peptic ulcer disease and acquired nystagmus<sup>[1][2]</sup>.

### REFERENCES

- [1]. Jabbari B, et al. Effectiveness of trihexyphenidyl against pendular nystagmus and palatal myoclonus: evidence of cholinergic dysfunction. *Mov Disord.* 1987;2(2):93-8.
- [2]. Leigh RJ, et al. Effect of anticholinergic agents upon acquired nystagmus: a double-blind study of trihexyphenidyl and tridihexethyl chloride. *Neurology.* 1991 Nov;41(11):1737-41.

**Caution: Product has not been fully validated for medical applications. For research use only.**

Tel: 609-228-6898

Fax: 609-228-5909

E-mail: tech@MedChemExpress.com

Address: 1 Deer Park Dr, Suite Q, Monmouth Junction, NJ 08852, USA