

## Vasopressin

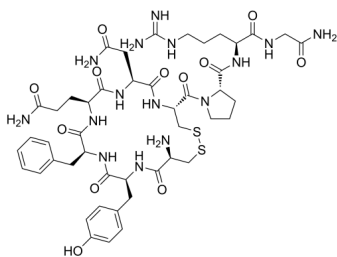
---

Cat. No.: HY-B1811  
Batch No.: 153861  
CAS No.: 11000-17-2  
Molecular Formula: C<sub>46</sub>H<sub>65</sub>N<sub>15</sub>O<sub>12</sub>S<sub>2</sub>

### ANALYTICAL DATA

Theoretical: C(-), H(-), N(-), Peptide Content(≥60.0%)  
Result: C(45.15%), H(6.74%), N(15.84%), Peptide Content(81.70%)

Chemical Structure:



**Caution: Product has not been fully validated for medical applications. For research use only.**

Tel: 609-228-6898

Fax: 609-228-5909

E-mail: [tech@MedChemExpress.com](mailto:tech@MedChemExpress.com)

Address: 1 Deer Park Dr, Suite Q, Monmouth Junction, NJ 08852, USA