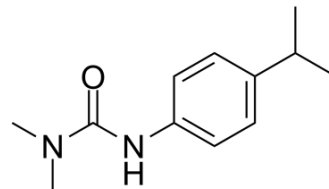


## Isoproturon

Cat. No.:	HY-B1859
CAS No.:	34123-59-6
Molecular Formula:	C <sub>12</sub> H <sub>18</sub> N <sub>2</sub> O
Molecular Weight:	206.28
Target:	Others
Pathway:	Others
Storage:	Please store the product under the recommended conditions in the COA.



### BIOLOGICAL ACTIVITY

#### Description

Isoproturon belongs to the phenylurea herbicide family and is a systemic and selective herbicide. Isoproturon is widely applied for killing weeds in farmland, which can be used in the control of annual grasses and broad-leaved weeds in spring and winter wheat, winter rye and spring and winter barley<sup>[1][2]</sup>.

### REFERENCES

[1]. Feng Fan Lu, et al. Isoproturon-Induced Salicylic Acid Confers Arabidopsis Resistance to Isoproturon Phytotoxicity and Degradation in Plants. *J Agric Food Chem.* 2018 Dec 19;66(50):13073-13083.

[2]. Mian Muhammad, et al. Determination of Isoproturon in Environmental Samples Using the QuEChERS Extraction-Spectrofluorimetric Method. *Environ Toxicol Chem.* 2019 Dec;38(12):2614-2620.

**Caution: Product has not been fully validated for medical applications. For research use only.**

Tel: 609-228-6898

Fax: 609-228-5909

E-mail: tech@MedChemExpress.com

Address: 1 Deer Park Dr, Suite Q, Monmouth Junction, NJ 08852, USA